

Manuscript version: Author's Accepted Manuscript

The version presented in WRAP is the author's accepted manuscript and may differ from the published version or Version of Record.

Persistent WRAP URL:

<http://wrap.warwick.ac.uk/118896>

How to cite:

Please refer to published version for the most recent bibliographic citation information. If a published version is known of, the repository item page linked to above, will contain details on accessing it.

Copyright and reuse:

The Warwick Research Archive Portal (WRAP) makes this work by researchers of the University of Warwick available open access under the following conditions.

Copyright © and all moral rights to the version of the paper presented here belong to the individual author(s) and/or other copyright owners. To the extent reasonable and practicable the material made available in WRAP has been checked for eligibility before being made available.

Copies of full items can be used for personal research or study, educational, or not-for-profit purposes without prior permission or charge. Provided that the authors, title and full bibliographic details are credited, a hyperlink and/or URL is given for the original metadata page and the content is not changed in any way.

Publisher's statement:

Please refer to the repository item page, publisher's statement section, for further information.

For more information, please contact the WRAP Team at: wrap@warwick.ac.uk.



Journal Name

COMMUNICATION

Supramolecular switching the self-assembly of cyclic peptide–polymer conjugate *via* host–guest chemistry

Qiao Song,^a Jie Yang,^a Julia Y. Rho,^a and Sébastien Perrier^{*abc}Received 00th January 20xx,
Accepted 00th January 20xx

DOI: 10.1039/x0xx00000x

www.rsc.org/

A supramolecular strategy of switching the self-assembly of cyclic peptide–polymer conjugate using host–guest chemistry is proposed. The formation of tubular supramolecular polymers based on cyclic peptide–polymer conjugates can be controlled by reversibly attaching cucurbit[7]uril onto the cyclic peptide *via* host–guest interactions.

Supramolecular polymers are defined as polymeric arrays of monomeric units which are held together by highly directional and reversible non-covalent interactions,^[1–9] such as multiple hydrogen bonding,^[10–13] host–guest interactions,^[14–18] metal–coordination interactions,^[19, 20] donor–acceptor interactions.^[21, 22] Among these, tubular supramolecular polymers assembled by cyclic peptide–polymer conjugates belong to a relatively new class of self-assembled supramolecular polymers.^[23–30] The alternating D- and L-amino acid configuration of the cyclic peptide leads to the formation of a flat ring-like structure. Between these cyclic peptide rings, there exist strong multiple hydrogen bonding interactions, leading to the formation of nanotubes.^[31, 32] Conjugating hydrophilic polymers onto cyclic peptides will prevent their aggregation and improve their stability and solubility, forming tubular supramolecular polymers with well-defined structure.^[33–37] However, in spite of the fact that the driving force is based on non-covalent multiple hydrogen bonding, studies on controlling the assembly and disassembly of the tubular supramolecular polymers are still limited.^[38–40]

Cucurbit[*n*]urils (CB[*n*]s), an important class of macrocyclic hosts, can bind firmly with a variety of neutral or positively charged guests.^[41] Among them, CB[7], comprising of 7 glycoluril units, has a height ~ 0.9 nm, an outer diameter 1.6 nm, and an inner diameter ~ 0.7 nm. Considering that the distance

between each cyclic peptide is reported to be 0.47 nm, it is anticipated that introducing CB[7] onto cyclic peptide could lead to the disassembly of the tubular supramolecular polymers due to the steric hindrance of the CB[7].^[42–44] In this regard, it is believed that we might be able to develop a strategy of tuning the self-assembly of cyclic peptide–polymer conjugate using CB based host–guest chemistry.

Herein, as a proof of concept, we designed and synthesized a cyclic peptide conjugated with a water-soluble polymer – poly(ethylene glycol) (PEG), which could form tubular supramolecular polymers in aqueous solution, Scheme 1. It has been reported that CB[7] binds strongly with a phenylalanine moiety, with the binding constant as high as 10⁶ M⁻¹.^[45] To this end, we introduced two phenylalanine moieties onto the cyclic peptide, enabling us to non-covalently incorporate two bulky CB[7] host molecules onto every cyclic peptide–polymer conjugate. Moreover, a competitive guest molecule (1-adamantanamine, ADA) can be added to disassociate the binding between the cyclic peptide–polymer conjugate and CB[7]. In this way, we are able to reversibly tune the self-assembly of the cyclic peptide–polymer conjugate.

A linear peptide with the sequence of H₂N-L-Lys(Boc)-D-Leu-L-Lys(N₃)-D-Leu-L-Lys(Boc)-D-Leu-L-Trp(Boc)-D-Leu-COOH was first synthesized by solid-phase peptide synthesis using Fmoc-deprotection chemistry. The cyclic peptide (H₂N)₂-CP-N₃ was then synthesized by cyclization reaction of the linear peptide under dilute conditions, followed by deprotection of the protecting groups (See SI S2). The two ‘guest’ phenylalanine moieties were introduced onto the cyclic peptide *via* a two-step synthesis (Phe₂-CP-N₃), which was confirmed by ¹H NMR spectroscopy and ESI-MS (See SI S2, Figure S4).

Conjugating a water-soluble polymer to the cyclic peptide helps improve the solubility of the cyclic peptide and prevent the further lateral aggregation of the formed tubular supramolecular polymers. Here, PEG (5000 g mol⁻¹) was chosen to conjugate to Phe₂-CP-N₃ through the highly efficient strained alkyne / azide group ligation. The cyclic peptide–polymer conjugate Phe₂-CP-PEG was easily synthesized by reacting Phe₂-

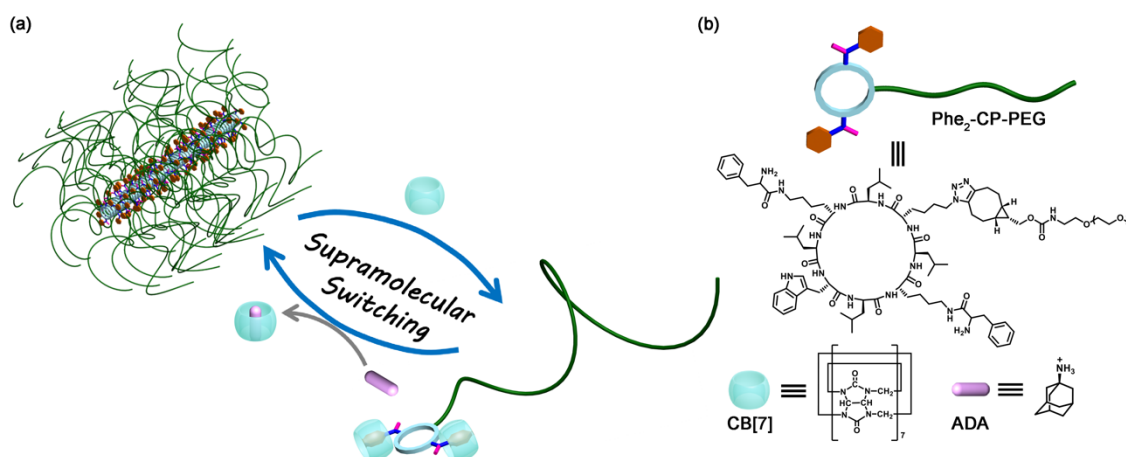
^a Department of Chemistry, University of Warwick, Gibbet Hill Road, Coventry CV4 7AL, UK. E-mail: S.Perrier@warwick.ac.uk.

^b Faculty of Pharmacy and Pharmaceutical Sciences, Monash University, 381 Royal Parade, Parkville, VIC 3052, Australia.

^c Warwick Medical School, The University of Warwick, Coventry CV4 7AL, UK.

Electronic Supplementary Information (ESI) available: See DOI: 10.1039/x0xx00000x

CP-N₃ with mPEG-BCN and purified by precipitation in a mixed solvent.



Scheme 1 (a) Schematic representation of the reversible self-assembly of cyclic peptide–polymer conjugate *via* host–guest chemistry; (b) Chemical structures of cyclic peptide–polymer conjugate Phe₂-CP-PEG, CB[7], and ADA.

The conjugate Phe₂-CP-PEG was thoroughly characterized by HPLC, GPC and ¹H NMR spectroscopy. As shown in Figure S6, the retention time of Phe₂-CP-PEG was 16.6 min, and no trace of unreacted Phe₂-CP-N₃ was observed at 17.2 min, indicating all the Phe₂-CP-N₃ was conjugated with mPEG-BCN. GPC analysis gave an increased $M_{n, GPC}$ of 18,800 g/mol with a narrow dispersity (\mathcal{D}) of 1.06 for Phe₂-CP-PEG conjugate, while the $M_{n, GPC}$ of mPEG-BCN is 10,800 g/mol, as shown in Figure S7. Finally, ¹H NMR spectrum of Phe₂-CP-PEG was measured in TFA-*d* and proton signals ascribed to cyclic peptide and PEG could be clearly assigned (Figure S8).

Hydrogen bonding interactions between the amide bonds of cyclic peptides are the driving force to form tubular supramolecular polymers. The self-assembly of Phe₂-CP-PEG in aqueous solution was first studied by diffusion-ordered NMR spectroscopy (DOSY). DOSY is a widely-used technique in the field of supramolecular chemistry to directly confirm the formation of assemblies in solution.^[46] As shown in Figure 1(a), the average diffusion coefficient of Phe₂-CP-PEG in D₂O was measured to be 2.2×10^{-11} m²/s, while the diffusion coefficient of mPEG-BCN was 1.0×10^{-10} m²/s (Figure S10). Such a decrease in the diffusion coefficient indicates the formation of large assemblies by Phe₂-CP-PEG conjugate. Simplistically assuming that all the assemblies are hydrodynamically spherical, the hydrodynamic radius R_h is estimated to be 11.2 nm based on the Stokes-Einstein equation (Figure S13, Table S1).

Small angle neutron scattering (SANS) is a powerful tool to characterize supramolecular systems to obtain information about structural parameters in solution. Here, we used SANS to confirm the formation of tubular supramolecular polymers in aqueous solution. Figure 1(b) shows the reduced, corrected scattering data for Phe₂-CP-PEG conjugate in D₂O. Using SASfit software, a cylindrical micelle with attached polymer chains ("CYL + CHAINS(RW)") (hairy cylinder) model was used, as fitting to a core-shell cylinder. From the fit, the average length of 16.8 ± 0.5 nm each nanotube could be obtained, with a width of 6.4 ± 0.1 nm. Given the distance between two cyclic peptides

has been previously determined to be 0.47 nm, the average number of aggregation (N_{agg}) is calculated to be 36.

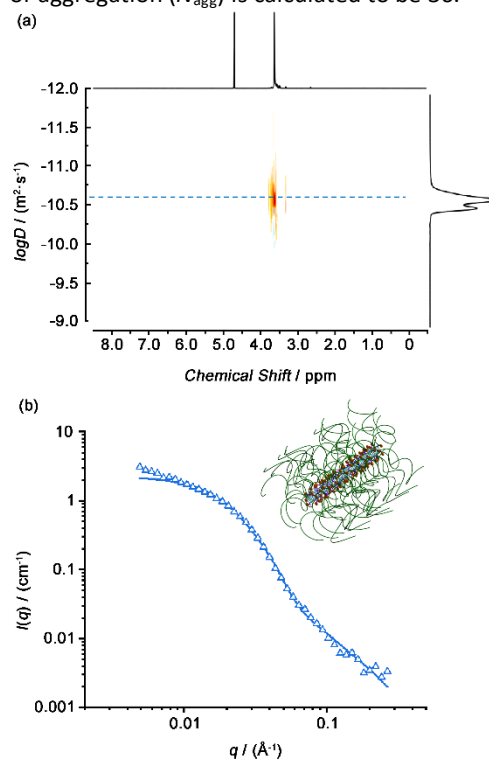


Figure 1 (a) DOSY spectrum of Phe₂-CP-PEG conjugate. (b) Reduced SANS scattering data for Phe₂-CP-PEG conjugate. The line corresponds to a fit to the hairy cylinder model.

The host–guest interaction between Phe₂-CP-PEG and CB[7] was established by ¹H NMR spectroscopy. Initially mPEG-Phe was synthesized as a model compound. A clear upfield shift was observed for the phenyl groups by ¹H NMR spectroscopy after complexed with CB[7] (Figure S11). Phe₂-CP-PEG conjugate showed similar changes. As indicated in Figure 2(a), after adding CB[7], characteristic peaks at 6.73, 6.58 and 6.63 ppm were observed, which could be ascribed to the phenyl groups on the

cyclic peptide encapsulated into the CB[7] cavity. Moreover, isothermal titration calorimetry (ITC) was used to thoroughly characterize the host-guest interactions between the conjugate and CB[7] (Figure 2(b)). A two sequential-binding sites model was used to fit the data, yielding thermodynamic parameters for the interaction between Phe₂-CP-PEG conjugate and CB[7], $K_1 = (1.1 \pm 0.2) \times 10^6 \text{ M}^{-1}$ and $K_2 = (7.1 \pm 0.4) \times 10^3 \text{ M}^{-1}$. It is worth

pointing out that the binding constant of the second step K_2 is significantly lower than that of the first step K_1 , which is believed to be related to the disassembly of the tubular supramolecular polymers upon the addition of CB[7]. In other words, the second step K_2 is in fact a combination of the binding between phenylalanine moiety and CB[7] and the disassembly of the cyclic peptides.

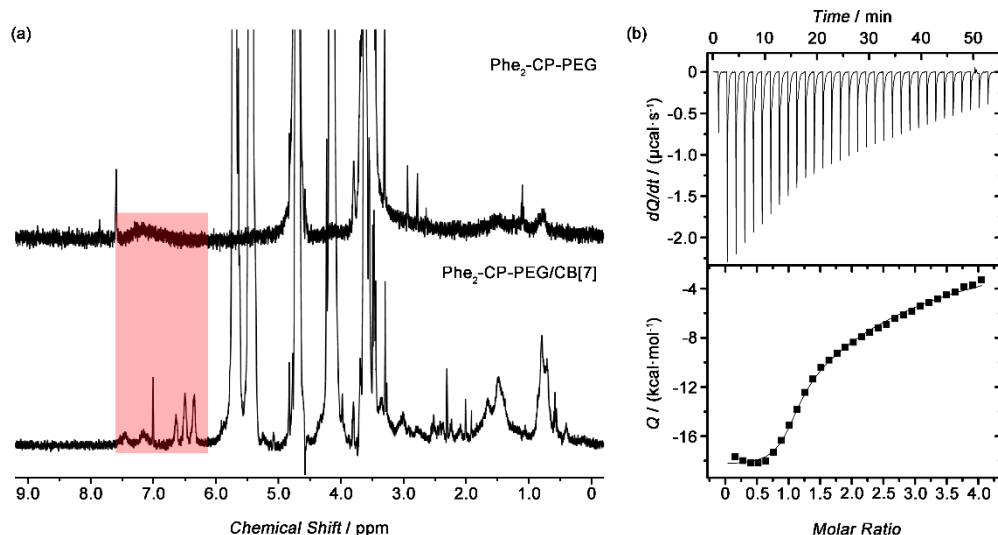


Figure 2 (a) ¹H NMR spectra of Phe₂-CP-PEG and Phe₂-CP-PEG/CB[7] (400 MHz, D₂O). (b) ITC data for titration of Phe₂-CP-PEG (0.1 mM) with CB[7] (2.0 mM) in DI water at 25 °C. Data was fitted using a two sequential-binding sites model.

To investigate whether introducing bulky CB[7] onto the cyclic peptide could lead to the disassembly of the tubular supramolecular polymers formed by Phe₂-CP-PEG conjugate, DOSY was conducted with Phe₂-CP-PEG in the presence of excess CB[7] in D₂O (Figure 3(a)). The diffusion coefficient was measured to be $6.5 \times 10^{-11} \text{ m}^2/\text{s}$, significantly higher than that of Phe₂-CP-PEG conjugate. The R_h is estimated to be 3.8 nm based on the Stokes-Einstein equation. The disassembly of the tubular supramolecular polymers was further proved by SANS. As shown in Figure 3(b), whilst a hairy cylinder model fit is not valid anymore, a polymer chain model (DozierStar) gives a better fitting, suggesting the tubular supramolecular polymers underwent disassembly due to the steric hindrance caused by CB[7] between the cyclic peptides.

More importantly, due to the dynamic nature of the host-guest interactions causing the disassembling of the tubular supramolecular polymers, the tubular supramolecular polymers could be reversibly reformed. Herein, ADA, which has a much stronger binding strength than phenylalanine moiety, was used as a competitive guest to dissociate the binding between Phe₂-CP-PEG and CB[7]. As shown by ¹H NMR spectroscopy (Figure S12), after adding ADA into the solution of Phe₂-CP-PEG and CB[7], peaks at 6.73, 6.58 and 6.63 ppm vanished and a broad peak at ~7.2 ppm was observed instead, suggesting CB[7] was dissociated from Phe₂-CP-PEG and therefore the tubular supramolecular polymers were reformed.

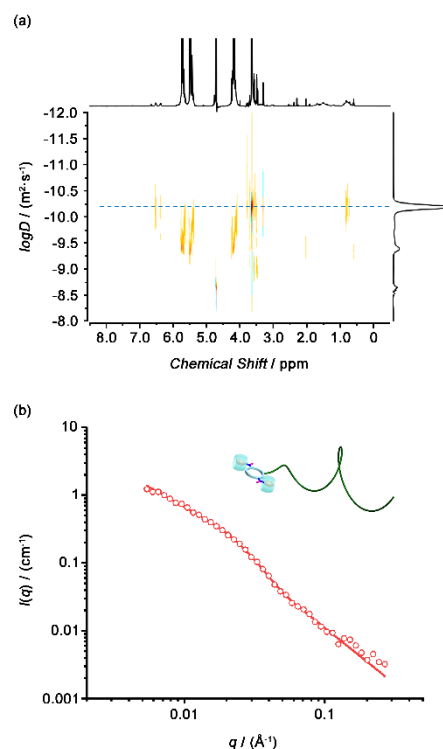


Figure 3 (a) DOSY spectrum of Phe₂-CP-PEG/CB[7]. (b) Reduced SANS scattering data for Phe₂-CP-PEG/CB[7]. The line corresponds to a fit to the polymer chain model.

Conclusions

In conclusion, we have successfully fabricated tubular supramolecular polymers on the basis of cyclic peptide–polymer conjugates. By introducing binding sites of CB[7] onto the cyclic peptide, the self-assembly of cyclic peptide–polymer conjugate could be easily tuned using CB based host–guest chemistry. Considering various functional polymers could be conjugated onto cyclic peptides to construct tubular supramolecular polymers with various functionalities, it is anticipated that this type of supramolecular host–guest strategy will provide a new perspective towards fine control of the structure and function of such tubular supramolecular polymers.

The Royal Society Wolfson Merit Award (WM130055; SP), the European Research Council (TUSUPO 647106; QS, JYR and SP) and the Horizon 2020 Marie-Sklodowska-Curie action (TSPBNTM, JY) are acknowledged for funding. The authors also thank Dr. Robert Dalgliesh (ISIS, Oxford, UK), as well as Dr. Edward Mansfield and Mr. Sean Ellacott for assistance with SANS. We also appreciate the help of Dr. Ivan Prokes with the help of DOSY.

Conflicts of interest

There are no conflicts to declare.

Notes and references

- C. Fouquey, J.-M. Lehn and A.-M. Levelut, *Adv. Mater.*, 1990, **2**, 254.
- J. -M. Lehn, *Polym. Int.*, 2002, **51**, 825.
- T. De Greef, M. Smulders, M. Wolffs, A. Schenning, R. Sijbesma and E. Meijer, *Chem. Rev.*, 2009, **109**, 5687.
- L. Yang, X. Tan, Z. Wang and X. Zhang, *Chem. Rev.*, 2015, **115**, 7196.
- E. Krieg, M. Bastings, P. Besenius and B. Rybtchinski, *Chem. Rev.*, 2016, **116**, 2414.
- X. Yan, F. Wang, B. Zheng and F. Huang, *Chem. Soc. Rev.*, 2012, **41**, 6042.
- T. Aida, E. Meijer and S. Stupp, *Science*, 2012, **335**, 813.
- J. Fox and S. Rowan, *Macromolecules*, 2009, **42**, 6823.
- X. Ma and H. Tian, *Acc. Chem. Res.*, 2014, **47**, 1971.
- R. Sijbesma, F. Beijer, L. Brunsveld, B. Folmer, J. Hirschberg, R. Lange, J. Lowe and E. Meijer, *Science*, 1997, **278**, 1601.
- B. Folmer, R. Sijbesma, R. Versteegen, J. van der Rijt and E. Meijer, *Adv. Mater.*, 2000, **12**, 874.
- R. Sijbesma and E. Meijer, *Chem. Commun.*, 2003, **5**.
- T. Park, E. Todd, S. Nakashima and S. Zimmerman, *J. Am. Chem. Soc.*, 2005, **127**, 18133.
- S. Dong, B. Zheng, F. Wang and F. Huang, *Acc. Chem. Res.*, 2014, **47**, 1982.
- Y. Liu, H. Yang, Z. Wang and X. Zhang, *Chem. - Asian J.*, 2013, **8**, 1626.
- A. Harada, Y. Takashima and H. Yamaguchi, *Chem. Soc. Rev.*, 2009, **38**, 875.
- G. Yu, X. Zhao, J. Zhou, Z. Mao, X. Huang, Z. Wang, B. Hua, Y. Liu, F. Zhang, Z. He, O. Jacobson, C. Gao, W. Wang, C. Yu, X. Zhu, F. Huang and X. Chen, *J. Am. Chem. Soc.*, 2018, **140**, 8005.
- C. Li, *Chem. Commun.*, 2014, **50**, 12420.
- J. Beck and S. Rowan, *J. Am. Chem. Soc.*, 2003, **125**, 13922.
- A. Wild, A. Winter, F. Schlutter and U. Schubert, *Chem. Soc. Rev.*, 2011, **40**, 1459.
- S. Burattini, H. Colquhoun, J. Fox, D. Friedmann, B. Greenland, P. Harris, W. Hayes, M. Mackay and S. Rowan, *Chem. Commun.*, 2009, 6717.
- Y. Tian, Y. Han, Z. Yang and F. Wang, *Macromolecules*, 2016, **49**, 6455.
- R. Chapman, M. Danial, M. Koh, K. Jolliffe and S. Perrier, *Chem. Soc. Rev.*, 2012, **41**, 6023.
- J. Couet, J. Jeyaprakash, S. Samuel, A. Kopyshv, S. Santer and M. Biesalski, *Angew. Chem., Int. Ed.*, 2005, **44**, 3297.
- M. G. J. ten Cate, N. Severin and H. G. Börner, *Macromolecules*, 2006, **39**, 7831.
- R. Chapman, K. A. Jolliffe and S. Perrier, *Polym. Chem.*, 2011, **2**, 1956.
- R. Hourani, C. Zhang, R. van der Weegen, L. Ruiz, C. Li, S. Keten, B. A. Helms and T. Xu, *J. Am. Chem. Soc.*, 2011, **133**, 15296.
- T. Xu, N. Zhao, F. Ren, R. Hourani, M. T. Lee, J. Y. Shu, S. Mao and B. A. Helms, *ACS Nano*, 2011, **5**, 1376.
- H. Borner, *Prog. Polym. Sci.*, 2009, **34**, 811.
- I. Cobo, M. Li, B. S. Sumerlin and S. Perrier, *Nat. Mater.*, 2014, **14**, 143.
- M. Ghadiri, J. Granja, R. Milligan, D. Mcrecree and N. Khazanovich, *Nature*, 1993, **366**, 324.
- S. Fernandez-Lopez, H. Kim, E. Choi, M. Delgado, J. Granja, A. Khasanov, K. Kraehenbuehl, G. Long, D. Weinberger, K. Wilcoxon and M. Ghadiri, *Nature*, 2001, **412**, 452.
- M. Danial, C. Tran, P. Young, S. Perrier and K. Jolliffe, *Nat. Commun.*, 2013, **4**, 2780.
- C. D. Spicer, C. Jumeaux, B. Gupt and M. M. Stevens, *Chem. Soc. Rev.*, 2018, **47**, 3574.
- J. C. Brendel, J. Sanchis, S. Catrouillet, E. Czuba, M. Z. Chen, B. M. Long, C. Nowell, A. Johnston, K. A. Jolliffe and S. Perrier, *Angew. Chem., Int. Ed.*, 2018, **57**, 16678.
- J. Y. Rho, J. C. Brendel, L. R. MacFarlane, E. D. H. Mansfield, R. Peltier, S. Rogers, M. Hartlieb and S. Perrier, *Adv. Funct. Mater.*, 2018, **28**, 1704569.
- Z. Wang, Y. Li, Y. Huang, M. P. Thompson, C. L. M. LeGuyader, S. Saha and N. C. Gianneschi, *Chem. Commun.*, 2015, **51**, 17108.
- S. Catrouillet, J. C. Brendel, S. Larnaudie, T. Barlow, K. A. Jolliffe and S. Perrier, *ACS Macro Lett.*, 2016, **5**, 1119.
- S. C. Larnaudie, J. C. Brendel, K. A. Jolliffe and S. Perrier, *ACS Macro Lett.*, 2017, **6**, 1347.
- L. Sun, Z. Fan, Y. Wang, Y. Huang, M. Schmidta and M. Zhang, *Soft Matter*, 2015, **11**, 3822.
- S. J. Barrow, S. Kasera, M. J. Rowland, J. del Barrio and O. A. Scherman, *Chem. Rev.*, 2015, **115**, 12320.
- K. Liu, Y. Liu, Y. Yao, H. Yuan, S. Wang, Z. Wang and X. Zhang, *Angew. Chem., Int. Ed.*, 2013, **52**, 8285.
- Q. Song, F. Li, Z. Wang and X. Zhang, *Chem. Sci.*, 2015, **6**, 3342.
- Y. Jiao, K. Liu, G. Wang, Y. Wang and X. Zhang, *Chem. Sci.*, 2015, **6**, 3975.
- J. W. Lee, H. H. L. Lee, Y. H. Ko, K. Kim and H. I. Kim, *J. Phys. Chem. B*, 2015, **119**, 4628.
- Y. Liu, Z. Wang and X. Zhang, *Chem. Soc. Rev.*, 2012, **41**, 5922.