

Instrument Box

Monitoring Point on Parapet

Flexible Tubes (notes)

B

[illegible]

# Pipex px

Pipex px® is a registered trademark and the trading style used by Pipex Ltd.

THIS DRAWING IS © PIPEX Ltd  
Reg. No. 1203356

Head Office :

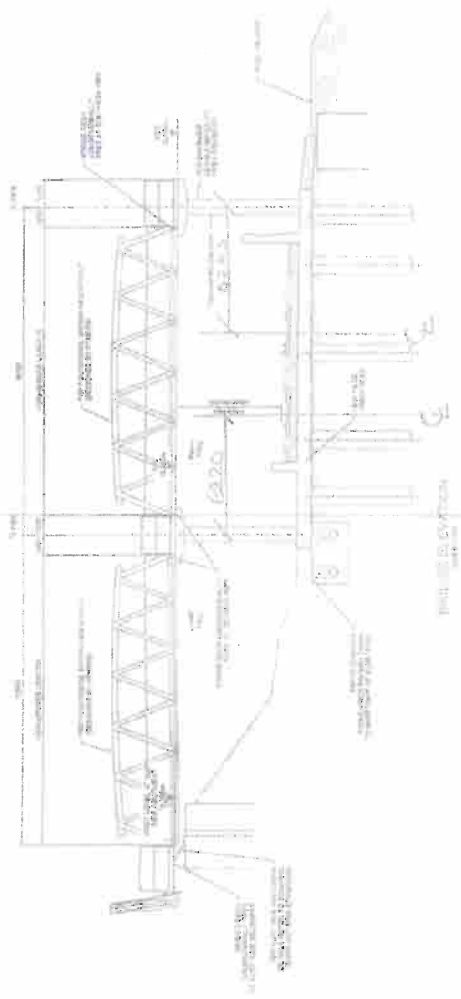
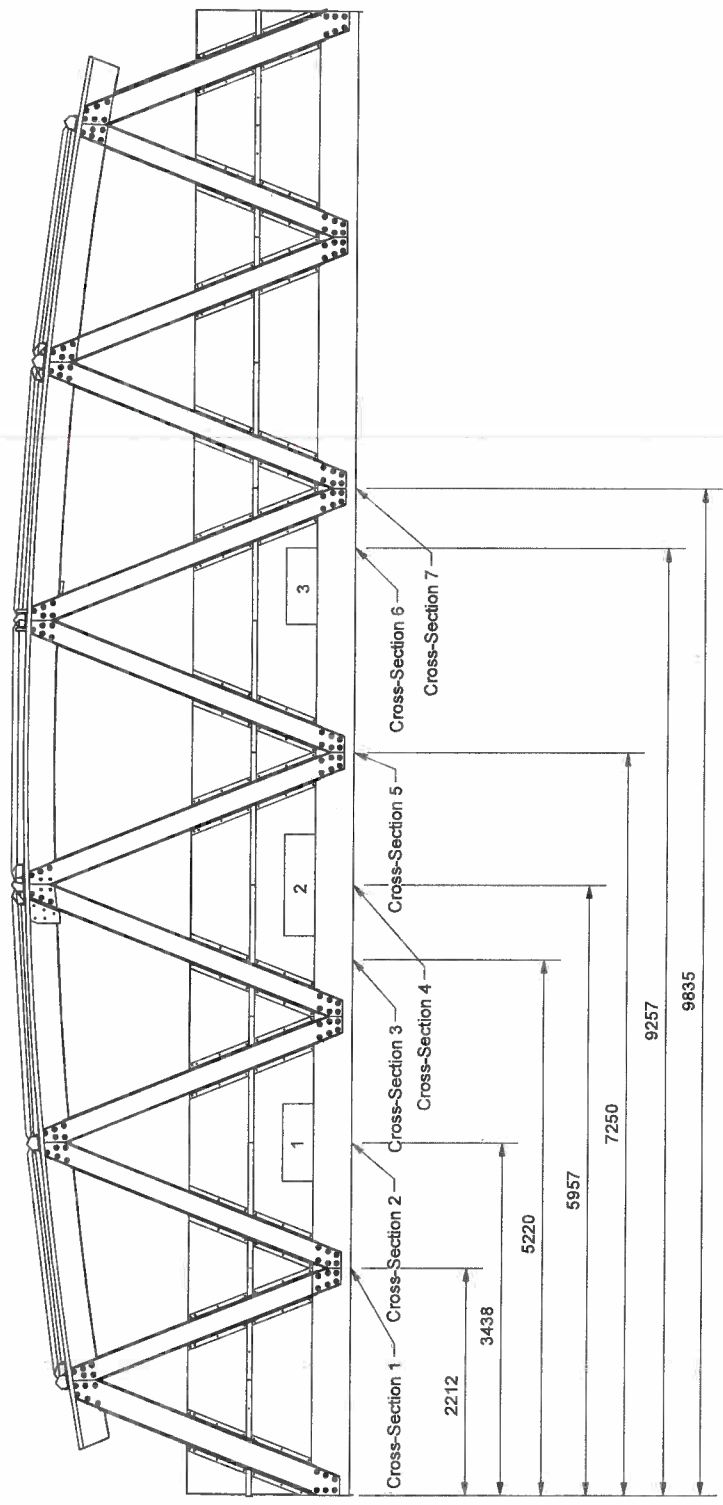
Pipex px® • Pipex House,  
 Devon Enterprise Facility, 1 Belliver Way  
 Roborough, Plymouth, Devon. PL6 7BP  
 Tel. (+44) 01752 581200  
 Fax. (+44) 01752 581209  
 e-mail: [sales@pipexp.com](mailto:sales@pipexp.com)  
 web site - [www.pipexp.com](http://www.pipexp.com)

web site = <a href="http://www.pipexpa.com">www.pipexpa.com</a>	
PROJECT	9
Train Buffeting at Dover Seawall FRP Bridge	

### Cross-Sections and Monitoring Points

Page No	151396-COT-DRG-ECV-004367	Scale use	Shdng.
1 of 2			
Approved By			

Project No.	20/09/2016	Rev	A
Project Name	PPS9826		



# Track Locations

## NOTES

6- Instrument Box 1 & 3:  
750 x 300 x 92 (mm)

7- Instrument Box 2:  
1000 x 300 x 92(mm)

TOLERANCES	
UNITS	VALUES
OVER 30	OVER 30
UP TO 30	UP TO 30
UP TO 100	UP TO 100
OVER 100	OVER 100
HOLES - H12	±0.3
HOLES - H12	±0.8
HOLES - H12	±1.2
HOLES - H12	±2
HOLES - H12	±3
HOLES - H12	±4
HOLES - H12	±5
HOLES - H12	±6
HOLES - H12	±7
HOLES - H12	±8
HOLES - H12	±9
HOLES - H12	±10
HOLES - H12	±11
HOLES - H12	±12
HOLES - H12	±13
HOLES - H12	±14
HOLES - H12	±15
HOLES - H12	±16
HOLES - H12	±17
HOLES - H12	±18
HOLES - H12	±19
HOLES - H12	±20
HOLES - H12	±21
HOLES - H12	±22
HOLES - H12	±23
HOLES - H12	±24
HOLES - H12	±25
HOLES - H12	±26
HOLES - H12	±27
HOLES - H12	±28
HOLES - H12	±29
HOLES - H12	±30
HOLES - H12	±31
HOLES - H12	±32
HOLES - H12	±33
HOLES - H12	±34
HOLES - H12	±35
HOLES - H12	±36
HOLES - H12	±37
HOLES - H12	±38
HOLES - H12	±39
HOLES - H12	±40
HOLES - H12	±41
HOLES - H12	±42
HOLES - H12	±43
HOLES - H12	±44
HOLES - H12	±45
HOLES - H12	±46
HOLES - H12	±47
HOLES - H12	±48
HOLES - H12	±49
HOLES - H12	±50
HOLES - H12	±51
HOLES - H12	±52
HOLES - H12	±53
HOLES - H12	±54
HOLES - H12	±55
HOLES - H12	±56
HOLES - H12	±57
HOLES - H12	±58
HOLES - H12	±59
HOLES - H12	±60
HOLES - H12	±61
HOLES - H12	±62
HOLES - H12	±63
HOLES - H12	±64
HOLES - H12	±65
HOLES - H12	±66
HOLES - H12	±67
HOLES - H12	±68
HOLES - H12	±69
HOLES - H12	±70
HOLES - H12	±71
HOLES - H12	±72
HOLES - H12	±73
HOLES - H12	±74
HOLES - H12	±75
HOLES - H12	±76
HOLES - H12	±77
HOLES - H12	±78
HOLES - H12	±79
HOLES - H12	±80
HOLES - H12	±81
HOLES - H12	±82
HOLES - H12	±83
HOLES - H12	±84
HOLES - H12	±85
HOLES - H12	±86
HOLES - H12	±87
HOLES - H12	±88
HOLES - H12	±89
HOLES - H12	±90
HOLES - H12	±91
HOLES - H12	±92
HOLES - H12	±93
HOLES - H12	±94
HOLES - H12	±95
HOLES - H12	±96
HOLES - H12	±97
HOLES - H12	±98
HOLES - H12	±99
HOLES - H12	±100

Pipex px® is a registered trademark and the trading style used by Pipex Ltd.

THIS DRAWING IS © Pipex Ltd  
Reg. No. 1203355

Head Office :  
Pipex px® - Pipex House,  
Devon Enterprise Facility, 1 Balfour Way  
Barnstaple, Plymouth, Devon, PL6 7BP  
Tel: (+44) 1752 512200  
Fax: (+44) 01752 581209  
e-mail: sales@pipexpx.com  
web site: www.pipexpx.com

PROJECT  
Train Buffering at Dover Seawall RD Bridge

TITLE  
Cross-Sections and Monitoring Points

Scale	1:500
Sheet	2 of 2
Drawn by	SA
Checked by	OK
Approved by	
Date	20/09/2016
Rev	A