

Original citation:

Iqbal, Hasan, Ting, Stephen M. S., Hamborg, Thomas, Imray, Chris H. E., Hewins, Susan, Banerjee, Prithwish, Bland, Rosemary, Higgins, Robert and Zehnder, Daniel. (2013) Reduced functional measure of cardiovascular reserve predicts admission to critical care unit following kidney transplantation. PLoS One, Volume 8 (Number 5). Article number e64335. ISSN 1932-6203

Permanent WRAP url:

<http://wrap.warwick.ac.uk/54842>

Copyright and reuse:

The Warwick Research Archive Portal (WRAP) makes the work of researchers of the University of Warwick available open access under the following conditions.

This article is made available under the Attribution 3.0 Unported (CC BY 3.0) license and may be reused according to the conditions of the license. For more details see:

<http://creativecommons.org/licenses/by/3.0/>

A note on versions:

The version presented in WRAP is the published version, or, version of record, and may be cited as it appears here.

For more information, please contact the WRAP Team at: wrap@warwick.ac.uk

warwick**publications**wrap

highlight your research

<http://go.warwick.ac.uk/lib-publications>

Reduced Functional Measure of Cardiovascular Reserve Predicts Admission to Critical Care Unit following Kidney Transplantation

Stephen M. S. Ting^{1,5*}, Hasan Iqbal², Thomas Hamborg⁴, Chris H. E. Imray^{3,5}, Susan Hewins¹, Prithwish Banerjee², Rosemary Bland⁵, Robert Higgins¹, Daniel Zehnder^{1,5*}

1 Department of Renal Medicine and Transplantation, University Hospitals Coventry and Warwickshire NHS Trust, Coventry, United Kingdom, **2** Department of Cardiology, University Hospitals Coventry and Warwickshire NHS Trust, Coventry, United Kingdom, **3** Department of Vascular and Renal Transplantation Surgery, University Hospitals Coventry and Warwickshire NHS Trust, Coventry, United Kingdom, **4** Division of Health Sciences Statistics and Epidemiology, Warwick Medical School, The University of Warwick, Coventry, United Kingdom, **5** Division of Metabolic and Vascular Health, Warwick Medical School, The University of Warwick, Coventry, United Kingdom

Abstract

Background: There is currently no effective preoperative assessment for patients undergoing kidney transplantation that is able to identify those at high perioperative risk requiring admission to critical care unit (CCU). We sought to determine if functional measures of cardiovascular reserve, in particular the anaerobic threshold (VO₂AT) could identify these patients.

Methods: Adult patients were assessed within 4 weeks prior to kidney transplantation in a University hospital with a 37-bed CCU, between April 2010 and June 2012. Cardiopulmonary exercise testing (CPET), echocardiography and arterial applanation tonometry were performed.

Results: There were 70 participants (age 41.7±14.5 years, 60% male, 91.4% living donor kidney recipients, 23.4% were desensitized). 14 patients (20%) required escalation of care from the ward to CCU following transplantation. Reduced anaerobic threshold (VO₂AT) was the most significant predictor, independently (OR=0.43; 95% CI 0.27–0.68; p<0.001) and in the multivariate logistic regression analysis (adjusted OR=0.26; 95% CI 0.12–0.59; p=0.001). The area under the receiver-operating-characteristic curve was 0.93, based on a risk prediction model that incorporated VO₂AT, body mass index and desensitization status. Neither echocardiographic nor measures of aortic compliance were significantly associated with CCU admission.

Conclusions: To our knowledge, this is the first prospective observational study to demonstrate the usefulness of CPET as a preoperative risk stratification tool for patients undergoing kidney transplantation. The study suggests that VO₂AT has the potential to predict perioperative morbidity in kidney transplant recipients.

Citation: Ting SMS, Iqbal H, Hamborg T, Imray CHE, Hewins S, et al. (2013) Reduced Functional Measure of Cardiovascular Reserve Predicts Admission to Critical Care Unit following Kidney Transplantation. PLoS ONE 8(5): e64335. doi:10.1371/journal.pone.0064335

Editor: Mercedes Susan Mandell, University of Colorado, United States of America

Received: February 11, 2013; **Accepted:** April 13, 2013; **Published:** May 27, 2013

Copyright: © 2013 Ting et al. This is an open-access article distributed under the terms of the Creative Commons Attribution License, which permits unrestricted use, distribution, and reproduction in any medium, provided the original author and source are credited.

Funding: This study was supported by a grant from the British Heart Foundation (BHF), United Kingdom (PG/11/66/28982). BHF had no role in study design, data collection and analysis, decision to publish, or preparation of the manuscript.

Competing Interests: The authors have declared that no competing interests exist.

* E-mail: stephen_ting@yahoo.com (ST); d.zehnder@warwick.ac.uk (DZ)

Introduction

A successful kidney transplant reduces the cardiovascular mortality risk when compared with maintenance dialysis therapy and relies on survival beyond the perioperative period [1,2]. Currently, there is no definitive consensus on the optimal pre-kidney transplant cardiac assessment strategy to produce a reliable prediction of perioperative morbidity following kidney transplantation. Intraoperative oxidative stress during surgery induces an increase in myocardial oxygen demand that is further exacerbated by perioperative fluid shift [3]. Patients with kidney failure have pre-existing co-morbid illness that contributes to structural cardiac and vascular alterations (myocardial fibrosis, excessive arterial calcification, intimal hyperplasia) [4,5]. These complex cardiovascular alterations affect microvascular flow and myocardial turgor, thereby are not conducive in

augmenting stroke volume or sustaining large volume cardiac output [6].

The main novelty of cardiopulmonary exercise testing (CPET) lies in its ability objectively to measure cardiovascular functional reserve, in contrast to other tools frequently used to assess cardiac function such as echocardiography or cardiac magnetic resonance (CMR) which focus mainly on left ventricular (LV) morphology [7–9]. CPET induces cardiovascular stress through incremental level of work and determines the ability of the cardiovascular system to drive and sustain the coupling between the cellular and pulmonary respirations under stress conditions [10–12]. The potential diagnostic utility of CPET for exercise-induced myocardial ischemia causing LV dysfunction has also been demonstrated in previous studies [13,14]. Therefore, the large amount of data generated by CPET could be used

objectively to evaluate cardiovascular response to physiologically induced stress.

Several studies have demonstrated that non-invasive CPET derived measures of cardiovascular reserve, especially the anaerobic threshold (VO_2AT) provide a reliable predictor of perioperative complications and mortality following major intra-abdominal surgery [15–18]. However, there is currently no such effective preoperative risk stratifying assessment for kidney transplant recipients. The goal of this prospective study is to examine the usefulness of CPET as a risk stratification tool for patients undergoing kidney transplantation. We hypothesized that functional quantification of cardiovascular reserve will identify kidney transplant recipients who have a high risk of developing perioperative complication requiring critical care unit (CCU) support following surgery.

Materials and Methods

Ethics Statement

The study protocol was approved by the Black Country Research Ethics Committee (REC reference number: 09/H1202/113).

Study Design

All patients aged 18 or over undergoing kidney transplantation at the University Hospitals Coventry and Warwickshire NHS Trust (United Kingdom) were invited to participate within 4 weeks prior to the surgery between April 2010 and June 2012. These patients had previously undergone standard kidney transplant work-up according to our center's protocol that included clinical evaluation, chest X-ray, electrocardiogram and echocardiography. Each prospective transplant recipient was evaluated by a transplant physician and a transplant surgeon. Thallium myocardial perfusion imaging, exercise tolerance test, coronary angiography, pulmonary function test and imaging of the iliac vessels were performed selectively as determined by the clinical assessment during the work-up period. All transplant recipients were reviewed by the anesthetist 6–36 hours prior to surgery.

For the purpose of this study, all recruited patients underwent the additional CPET, arterial applanation tonometry and a study-specified echocardiography within 4 weeks prior to transplantation. CPET data were not used to determine the inclusion or exclusion of prospective kidney transplant recipients. All assessments at study entry were carried out on the first non-dialysis day for living donor kidney transplant recipients who were hemodialysis dependent and prior to first antibody removal therapy with double filtration plasmapheresis (desensitization) for those who had donor kidney directed antibodies [19]. Recipients of kidneys from deceased donors were approached on the day of admission and assessed prior to surgery. All participants were recruited as part of an ongoing prospective, longitudinal, non-randomized concurrent control study, designed to determine the impact of kidney transplantation on functional cardiovascular reserve and LV dimensions, whereby patients were re-evaluated with CPET and echocardiography at 60 days and 1 year following transplantation. Patients with conditions precluding exercise testing were excluded. Written informed consent was obtained from all eligible participants.

The main outcome of interest was unplanned admission to CCU due to post-operative requirement for invasive or intensive central hemodynamic monitoring allowing for accurate infusion of volume expanders or circulatory support with vasoactive drugs. Indications for this were persisting hemodynamic

instability alone or hemodynamic instability in patient with sepsis. Hemodynamic instability was defined as persistently low systolic arterial blood pressure (≤ 85 mmHg) despite adequate blood volume expansion targeted to a central venous pressure of 10–12 mmHg and as determined by clinicians in the ward. In addition, an observation based modified early warning scoring system (MEWS) [20,21] was used to trigger early assessment and intervention on the ward. Involved clinicians were blinded to the CPET results.

Clinical Data

Baseline clinical and demographic data were recorded including weight, height, body mass index (BMI), duration of CKD and dialysis vintage. Assessment of traditional cardiovascular risk factors included a history of any of the following: (1) A previous coronary artery disease event (CAD: nonfatal myocardial infarction, acute coronary syndrome requiring hospitalization, percutaneous coronary intervention or coronary artery bypass graft), (2) cerebrovascular disease (CVD: transient ischemic attack or stroke), (3) diabetes (use of oral hypoglycemics or insulin), (4) dyslipidemia (use of lipid-lowering therapy), (5) hypertension (use of antihypertensives), and (6) smoking status (ever or never). Serial 12-lead electrocardiograms were performed at study entry, during hospital admission for surgery (including the pre-, peri- and postoperative period as well as during stay in the CCU) and at clinic visit, 60 days following transplantation. All kidney transplant recipients who were admitted to CCU were identified. Length of stay in the CCU and hospital were recorded.

Cardiopulmonary Exercise Testing

Prior to exercise testing, forced expiratory volume in 1 sec (FEV_1) and full vital capacity (FVC) of the lungs were measured. Exercise testing to maximal exhaustion using cycle ergometer ramping protocol, incorporating an individualized work rate was performed. Minute ventilation (VE), oxygen consumption (VO_2), carbon dioxide production (VCO_2) and other associated parameters were acquired via breath-by-breath analysis (VIASYS, MasterScreen CPX[®], Hoechberg, Germany). The metabolic cart was recalibrated for consecutive patients. A 12-lead electrocardiogram was recorded continuously throughout testing and during recovery. Test was terminated at maximal exhaustion, accompanied by attainment of a respiratory exchange ratio (RER, ratio of CO_2 production to O_2 consumption) of a value ≥ 1.15 . VO_2peak was measured as the highest VO_2 achieved during the final 30 sec of peak exercise. VO_2AT was determined by the V-slope method in conjunction with analyses of the ventilatory equivalents (VE/VO_2 and VE/VCO_2) and end-tidal gas tensions ($\text{P}_{\text{ET}}\text{O}_2$ and $\text{P}_{\text{ET}}\text{CO}_2$) plots [22]. This was undertaken by two experienced investigators.

Echocardiographic Study

2-dimensional echocardiography and Doppler blood flow measurements were performed [23]. Calculations included left LV diastolic and systolic volumes, LV mass, ejection fraction (LVEF) according to Simpson's method and left atrial volume (LAV). Mitral inflow measurements included peak early (E) and late (A) flow velocities. Tissue Doppler imaging of the mitral annulus, sequentially at the lateral and septal annular sites were obtained from the apical 4-chamber view. The ratio of early transmitral flow velocity to averaged annular (septal and lateral) mitral velocity (E/E') was taken as an estimate of LV filling pressure.

Table 1. Baseline characteristics of the patients.

Characteristics	Non-CCU patients (N = 56)	CCU patients (N = 14)	Difference (95% CI)
Age, years	39.8 ± 14.2	49.9 ± 12.4	10.1 (2.1–18.7)
Male, n (%)	38 (67.8)	4 (28.6)	–39.2 (–59.3– –10.1) ⁽¹⁾
Caucasian, n (%)	47 (83.9)	13 (92.8)	8.9 (–22.0–16.5) ⁽¹⁾
BMI, kg/m ²	24.8 ± 3.7	24.6 ± 3.3	–0.2 (–2.4–1.9)
Desensitized, n (%)	7 (12.5)	8 (57.1)	44.6 (17.7–67.0) ⁽¹⁾
CKD duration, months	114.0 (46.5–210.3)	200.5 (93.0–270.0)	60.0 (0.0–132.0) ⁽²⁾
Dialysis duration, months	4.5 (0.0–26.8)	32.0 (18.8–89.5)	24.0 (6.0–36.0) ⁽²⁾
Pre-dialysis, n (%)	24 (42.9)	1 (7.2)	–35.7 (–8.6– –50.0) ⁽¹⁾
Dialysis-dependent, n (%)	32 (57.1)	13 (92.8)	35.7 (8.6–50.0) ⁽¹⁾
Resting blood pressure			
Systolic, mmHg	137.3 ± 20.6	137.6 ± 16.8	0.3 (–11.5–12.3)
Diastolic, mmHg	82.2 ± 12.3	80.4 ± 6.4	–1.8 (–8.7–4.9)
Cardiovascular risk factors			
Hypertension (%)	52 (92.9)	12 (85.7)	–7.1 (–33.2–7.1) ⁽¹⁾
Dyslipidemia (%)	20 (35.7)	6 (42.8)	7.1 (–18.0–34.2) ⁽¹⁾
Diabetes (%)	5 (8.9)	2 (14.3)	5.4 (–9.2–31.5) ⁽¹⁾
Tobacco (%)	28 (50.0)	6 (42.8)	–7.1 (–32.1–20.5) ⁽¹⁾
CAD (%)	3 (5.4)	0 (0.0)	–5.4 (–14.6–16.4) ⁽¹⁾
CVD (%)	3 (5.4)	0 (0.0)	–5.4 (–14.6–16.4) ⁽¹⁾
Blood parameters			
Hemoglobin, g/dl	11.8 ± 1.4	11.44 ± 2.1	–0.4 (–1.4–0.4)
C-reactive protein, mg/L	0.0 (0.0–6.0)	4.5 (0.0–9.7)	0.0 (0.0–5.0) ⁽²⁾
Albumin, g/L	44.0 (42.0–46.0)	43.5 (39.0–45.0)	–1.0 (–3.0–1.0) ⁽²⁾
Spirometry			
FEV ₁ , % predicted	89.1 ± 18.6	83.9 ± 21.5	–5.2 (–19.7–3.6)
FEV ₁ /FVC	75 (72–83)	76 (68.8–77.3)	–2.0 (–7.0–2.0) ⁽²⁾
Arterial compliance			
PWV, m/s	7.4 (6.4–8.8)	8.2 (7.4–10.3)	0.9 (–0.2–2.0) ⁽²⁾
Augmentation index, %	20.6 ± 15.3	26.5 ± 12.8	5.9 (–3.7–14.0)
CPET variables			
VO ₂ AT, ml/min/kg	12.5 ± 2.2	9.7 ± 1.7	–2.8 (–4.1– –1.6)
VO ₂ peak, ml/min/kg	22.1 ± 5.8	16.8 ± 4.3	–5.3 (–8.6– –2.0)
Oxygen pulse (ml O ₂ /min)	11.8 ± 4.5	9.0 ± 2.4	–2.8 (–5.3– –0.3)
VE/VCO ₂ slope	31.2 ± 6.6	33.9 ± 5.2	2.7 (–1.2–6.4)

Data are mean ± SD, median (IQR) or frequencies (%). BMI, body mass index; CI, Confidence interval; CKD, chronic kidney disease; CAD, coronary artery disease; CVD, cerebrovascular disease; FEV₁, forced expiratory volume in 1 sec; FVC, full vital capacity; PWV, carotid-femoral pulse wave velocity; CPET, cardiopulmonary exercise testing; VO₂AT, anaerobic threshold; VO₂peak, oxygen consumption at maximal exercise. VE/VCO₂ (ventilatory efficiency) measured from the start of unloaded pedaling to maximal exercise. ⁽¹⁾ Differences for non-continuous variables are expressed as relative frequency differences with corresponding Wilson Score confidence limits. ⁽²⁾ Differences for non-normal continuous variables are expressed as Hodges-Lehmann location shifts and Hodges-Lehmann confidence limits.
doi:10.1371/journal.pone.0064335.t001

Arterial Applanation Tonometry

The SphygmoCor System (AtCor Medical Pty Ltd., Australia) was used to evaluate arterial compliance. Aortic pulse wave-form, augmentation pressure, and augmentation index were derived by tonometric applanation of the radial artery. Using similar technique, carotid-femoral pulse wave velocity (PWV) was determined from the time taken for the arterial pulse to propagate from the carotid to the femoral artery. A minimum of 3 readings were obtained for all parameters.

Statistical Methods

Results are expressed as mean, median or frequencies with corresponding confidence interval (CI) estimates depending on the distribution and type of the variable. Logistic regression was utilized to calculate odds ratios (ORs) with 95% CI limits for risk factors of CCU admission. Multiple (binary) logistic regression models were fitted to identify a prediction model for CCU admission. For this, risk factors which were significant in the univariate modeling (plus known confounders) were considered for the model allowing multiple predictor variables. Three different effect selection methods (forward selection, backwards elimination and stepwise selection) were used for the multiple logistic

regression modeling to evaluate the consistency of results. A p-value <0.05 was required for effect inclusion in the multivariate modeling and an effect elimination criterion of p<0.10 was chosen. To evaluate the accuracy of different VO₂AT ‘cut-off’ values to predict CCU admission, ordinary and cross validated receiver operating characteristic (ROC) curves and area under curve (AUC) estimates were calculated. The optimal cut-off is estimated based on the Youden index criterion [24] which is optimal in the sense that it provides a score which reflects the intention of maximizing the overall correct classification rate. All analyses were performed using SAS software, version 9.3 (SAS Institute Inc.).

Results

Clinical Characteristics

Eighty-one patients were screened for inclusion into the study and seventy individuals were included after the exclusions of eleven (one patient aged <18 years, one had myopathy secondary to mitochondrial cytopathy, one deceased kidney transplant recipient due to inadequate time for complete assessment and eight patients did not provide consent). Analysis of unplanned CCU admitted patients included the fourteen patients who fulfilled the study-defined indications for CCU admission. One patient who was admitted to CCU electively from theatre for a non-study indication (telemetry monitoring due to prior history of ischemic cardiomyopathy) was grouped as ‘non-CCU’.

Baseline characteristics of seventy CKD patients are shown in Table 1. 91.4% of patients received kidneys from living donors and 8.6% were deceased kidney transplant recipients. Mean age of all patients was 41.7±14.5 years and 60% were male. Fifteen recipients (23.4%) of antibody-incompatible living-donor kidneys were treated with plasmapheresis based antibody removal protocol. Following transplantation, fourteen patients (20%) required escalation of care from the ward to CCU. Patients admitted to CCU were predominantly female (71.4%) compared to non CCU patients (32.2%) (Difference Δ=39.2%, 95% CI 16.9–67.9). CCU patients were older (49.9±12.4 years) compared to patients that did not require critical care support (39.8±14.2 years) (Δ=10.1, 95% CI 2.1–18.7). Forty-five (64.3%) patients were dialysis dependent prior to transplantation and 28.9% of these patients required critical care support following surgery. More than half of those who had antibody removal therapy (57.1%) required CCU support following transplantation (Δ=44.6%, 95% CI 16.9–67.9). There were no associations between preexisting coronary artery disease and diabetes with CCU admissions.

Admission to CCU within 24 hours following transplantation was documented in twelve patients whilst two patients had escalation of care to CCU more than a week following transplantation (day 10 and day 12 respectively). Hemodynamic instability (systolic arterial blood pressure ≤85 mmHg) accounted for all CCU admissions including two patients who also had sepsis (Gram negative bacteremia). 71.4% of CCU admitted patients received intravenous vasopressors whilst four patients had intra-arterial blood pressure and central venous pressure measurements to guide volume expansion without the eventual need for vasoactive drugs. There were no ischemic or arrhythmic ECG changes during the peri- and post-operative period; and at 60 days follow-up in all patients. The average duration of stay for those admitted to CCU was 3 days and this group had a longer hospital stay following transplantation (9 days, IQR: 7–15) versus those that were not admitted to CCU (7 days, IQR: 6–8; p = 0.02). No

major cardiovascular events (death, myocardial infarction or non-fatal angina) were recorded at 60 days post transplantation.

LV Morphology among Kidney Transplant Recipients

Kidney transplant recipients had a mean LVEF of 59.9±9% and the echocardiographic indices were not statistically different between patients who were in CCU and those that did not require admission to CCU (Table 2). Univariate logistic regression modeling did not yield a significant association between preoperative LVEF, LV mass, LV filling pressure (diastolic compliance) or LA volume with the risk of CCU admission (Figure 1).

Functional Measures of Cardiovascular Reserve

All seventy patients completed maximal exercise testing, accompanied by a mean RER of 1.25±0.12. The mean RER at the point of VO₂AT was 0.88±0.07. The mean duration of freewheel and loaded pedaling was 10.50±2.02 minutes. Univariate logistic regressions for CPET variables’ association with CCU admission are summarized in Figure 2. Low levels of VO₂AT, VO₂max, oxygen pulse and maximum work rate were significantly associated with admission to CCU following transplantation. Measure of VO₂AT was strongly correlated with VO₂peak (r = 0.77, 95% CI 0.65–0.85), oxygen pulse (r = 0.54, 95% CI 0.35–0.69) and maximum work rate (r = 0.55, 95% CI 0.36–0.69) (Table 3). The mean VO₂AT was significantly lower in the CCU admitted compared to non CCU patients (p<0.001) (Table 1 and Figure 3).

Predictors of CCU Admission

To derive a prognostic model for CCU admission, multiple logistic regression models were fitted. Predictors which were significant in the univariate analysis were admitted to the multivariate modeling. Dialysis vintage and BMI are known confounders of cardiovascular and postoperative morbidity [25–27], and were therefore included in the initial set of risk predictors. Known cardiovascular risk factors were included in the variable selection process so that a total of 11 variables were considered. The established risk factors CVD and CAD (CVD/CAD) were omitted as odds ratio estimates are unobtainable due to the absence of prior history of CVD/CAD in CCU admitted patients. Table 4 shows the predictor’s ORs and 95% CIs estimated from univariate and multivariate models. Our primary research hypothesis concerned the association of VO₂AT and CCU admission. Therefore, and because of its high reproducibility [28] and strong correlation (multicollinearity) with the VO₂max,

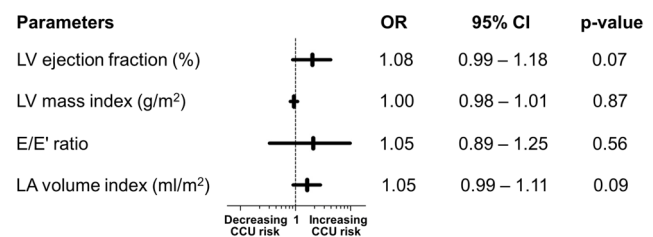


Figure 1. Univariate logistic regression of major echocardiographic parameters and CCU admission. LVEF, LV ejection fraction; LVMI, LV mass index corrected to body surface area; E/E', ratio of early transmitral flow velocity to annular mitral velocity (averaged of septal and lateral); LAVI, left atrial volume index corrected to body surface area. OR, odds ratio; Horizontal bars represent the 95% CI. One metric unit increase in the parameters is associated with the odds of CCU admission.

doi:10.1371/journal.pone.0064335.g001

Table 2. Echocardiographic indices for all patients.

Indices	All patients (N= 70)	Non-CCU patients (N= 56)	CCU patients (N= 14)	p -value
LVEF, %	59.9±9	58.8±8.9	63.4±8.2	0.08
Fractional shortening, %	31.7±6.6	31.7±6.7	31.8±6.3	0.92
LA diameter, cm	3.5±0.7	3.5±0.7	3.5±0.6	0.89
LAVI, mL/m ²	25.4±10.2	24.4±7.7	29.8±17.2	0.07
LVMI, g/m ²	118.8±42.6	119.2±39.5	117±56.4	0.87
LVH, n (%)	30 (42.9)	25 (44.6)	5 (35.7)	0.55
LV mass categorization				0.80
Normal, n (%)	13 (18.6)	11 (20)	2 (13.3)	
Concentric remodelling, n (%)	27 (38.6)	20 (36.4)	7 (46.7)	
Concentric LVH, n (%)	23 (32.9)	19 (33.9)	4 (28.6)	
Eccentric LVH, n (%)	7 (10)	6 (10.9)	1 (6.7)	
E/A	1.1±0.4	1.1±0.4	1±0.4	0.48
Deceleration time, ms	216.6±49	215.3±51	221.5±43	0.62
IVRT, ms	91±26.8	91.1±24.5	90.5±36.7	0.94
E/E'	8.3±3.2	8.2±3.4	8.8±2.7	0.57

Data are mean ± SD or frequencies (%). Analysed using independent samples t-test or χ^2 .LVEF, LV ejection fraction; LA, left atrium; LAVI, left atrial volume index corrected to body surface area; LVMI, LV mass index corrected to body surface area; LVH, left ventricular hypertrophy; E/A, the ratio of peak early to late transmitral ventricular filling velocities; IVRT, isovolumic relaxation time; E/E', ratio of early transmitral flow velocity to annular mitral velocity (averaged of septal and lateral). doi:10.1371/journal.pone.0064335.t002

oxygen pulse and maximal work rate (Table 3), VO₂AT was selected for the multivariate modeling and other significant CPET variables were not. Though insignificant in the univariate analysis, patients with a higher BMI had reduced odds of CCU admission in the multivariate analysis (adjusted OR = 0.72, 95% CI 0.52–0.99, p = 0.04). Figure 4 shows preoperative variables included in a multivariate model by variable selection procedures. The final risk prediction model consists of 3 predictors: VO₂AT, BMI and desensitization status; model-building strategies forward selection, backwards elimination and stepwise variable selection resulted in the same model. The Hosmer-Lemeshow test is not significant, indicating that there is no evidence for lack of fit in the final multiple logistic regression model (chi-square = 6.71, degree of freedom = 8, p = 0.57). The area under the ROC curve is 0.93,

indicating a very high probability of correctly classifying a randomly chosen pair consisting of a patient who requires CCU admission and a patient who does not (Figure 5). Using cross-validation to obtain an unbiased estimate results in an AUC of 0.90. An equation based on the model that allows estimation of the probability of CCU admission following kidney transplantation is described as follows:-

Calculation of the predicted risk using patient’s data and multivariate logistic regression model. The odds of admission to CCU following kidney transplantation is calculated as $odds = \exp[27.003 + (-1.334 \times VO_2AT) + (-0.334 \times BMI) + (-2.342 \times \text{Desensitization status})]$. The measured values are entered for the risk variables VO₂AT and BMI, whilst desensitization status is coded as either 1

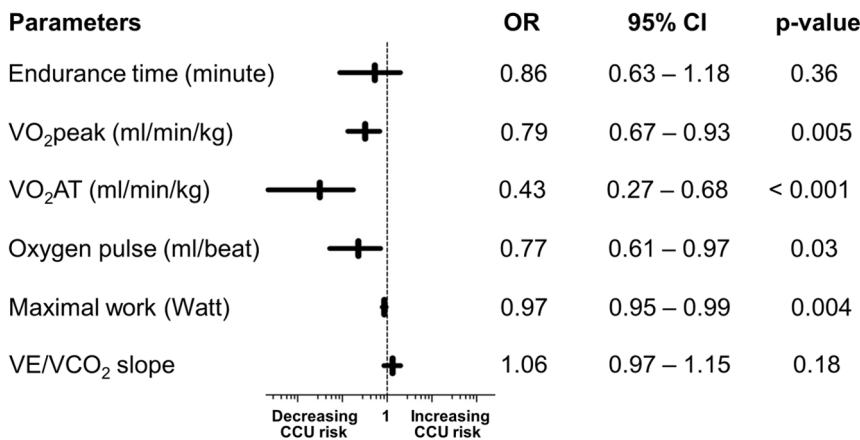


Figure 2. Univariate logistic regression of CPET derived measures of cardiovascular reserve and CCU admission. VO₂peak, oxygen consumption at maximal exercise; VO₂AT, anaerobic threshold; VE/VCO₂ (ventilatory efficiency) measured from the start of unloaded pedaling to maximal exercise. OR, odds ratio; Horizontal bars represent the 95% CI. One metric unit increase in the parameters is associated with the odds of CCU admission. *p<0.05. doi:10.1371/journal.pone.0064335.g002

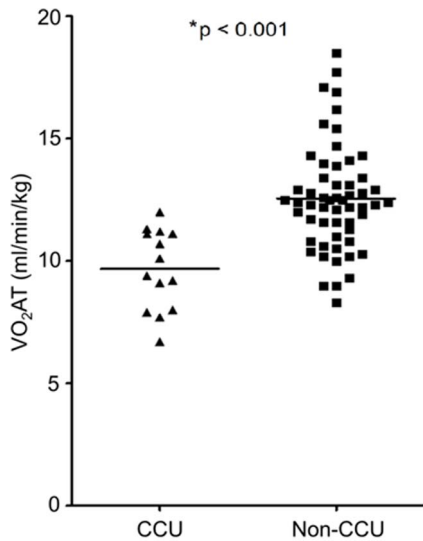


Figure 3. Anaerobic threshold measurements in CCU admitted and non CCU patients. Horizontal lines refers to mean values of anaerobic threshold (VO₂AT). Squares are VO₂AT of non CCU patients and triangles are VO₂AT of CCU admitted patients. *The p-value of the difference in the mean values of VO₂AT between CCU admitted and non CCU patients. doi:10.1371/journal.pone.0064335.g003

(yes) or 0 (no). The predicted risk (probability) of CCU admission following kidney transplantation is calculated as $odds / (1 + odds)$.

Considering the variable VO₂AT univariately as a predictor yields an optimal cut-off of VO₂AT = 11.31 ml/min/kg for distinguishing between the CCU admitted and non-admitted populations (Youden index J = 0.68). This translates into a sensitivity of 92.9% and a specificity of 75.0% at this cut-off point.

Discussion

This is the first prospective study to demonstrate an independent association between objective indices of cardiovascular reserve, in particular the VO₂AT, measured preoperatively and CCU admission following kidney transplantation. In the preoperative assessment setting of major intra-abdominal surgery (all previous studies precluded kidney transplantation), three physiological CPET variables have been shown effectively to identify high risk patients: VO₂AT [15,16], VO₂peak [18] and ventilatory equivalent for carbon dioxide (VE/VCO₂) [16,17]. This study identifies similar importance of VO₂peak and VO₂AT, with the additional measures of oxygen pulse and maximal work rate as markers of high perioperative risks (Figure 2). The index of VE/VCO₂ appears not to have any significant preoperative risk predicting strength among CKD patients. VO₂AT is defined as the point during incremental exercise when oxygen demand exceeds oxygen delivery, thus causing the anaerobic metabolism to make up the deficit, with a consequential rise in serum lactate concentration. It is a measure of the ability of the cardiovascular system to deliver adequate oxygen to tissue and possesses the advantage over VO₂peak, of being independent of patient motivation or premature termination of test [28]. Among the CPET variables in this study, measure of sustainable oxygen consumption (VO₂AT) carries the strongest risk predicting strength independently (Figure 2) and remains significant after adjusting for age and gender (Table 4), attesting to the study’s hypothesis that reduced objective measure of cardiovascular reserve is associated with an increased perioperative morbidity.

Table 3. Correlation between VO₂AT and other CPET-derived indices of cardiovascular reserve (n = 70).

Parameters	R	95% CI	p - value
VO ₂ peak (ml/min/kg)	0.77	0.65–0.85	<0.001*
Oxygen pulse (ml of O ₂ /beat) ^a	0.54	0.35–0.69	0.02*
Maximal work (Watt)	0.55	0.36–0.69	0.01*

^aLogarithmic transformation applied for analysis; r, Pearson’s correlation coefficient; Fisher’s z-transformation has been used to derive CIs and p-values under the null hypothesis H₀, r = 0.3.

*p < 0.05.

doi:10.1371/journal.pone.0064335.t003

In contrast with other studies [15–18], low VO₂AT among kidney transplant recipients does not carry any risk of death or cardiac ischemia at 60 days following surgery. This is despite the fact that a similar proportion of patients (33%) who underwent surgery had an VO₂AT of less than 11 ml/min/kg in this study compared with previous studies, such as 29% in the one by Older and colleagues [15]. This suggests that the prognostic values of VO₂AT in other major intra-abdominal studies may not be transferable to kidney transplantation. The study also shows no associations between the static measures of cardiac function (echocardiography) or aortic compliance and perioperative risk among CKD patients. Additionally, there were no events of cardiac ischemia during the perioperative period to 60 days following surgery. The relevance of these is in keeping with the findings of a recent preoperative (kidney transplant) cardiac assessment study that demonstrated not only the low incidence of cardiac ischemia perioperatively among high cardiac risk cohort but also the lack of prognostic abilities of tools such as myocardial scintigraphy, dobutamine stress echocardiography or coronary angiogram (with subsequent revascularization if positive stress test) in reducing perioperative cardiac events [29].

In antibody incompatible transplantations, patients receive more cumulative immunosuppression treatment, including plasmapheresis and anti-thymocyte globulin [19,30], which increase the risk of sepsis. However, among the eight desensitized patients admitted to CCU, only one required admission following a development of neutropenic sepsis and hypotension, 10 days following kidney transplantation. Adverse cardiovascular effects of the standard oral immunosuppressive therapies usually occur over time and are unlikely to have any direct impact on perioperative outcome [31]. However, the insult of sepsis can expose the limits of patient’s cardiovascular reserve. The hemodynamic profile of sepsis includes loss of vascular responsiveness and decrease venous return to the heart resulting in a decrease in cardiac output

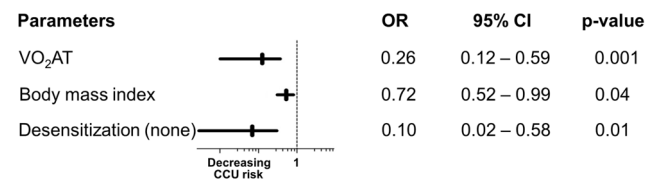


Figure 4. Final risk-prediction model based on 3 predictors of CCU admission. One metric unit increase in the parameters (except desensitization status) is associated with the odds of CCU admission. *Desensitization (none) = No desensitization therapy is associated with decrease odds in CCU admission. OR, odds ratio; Horizontal bars represent the 95% CI.

doi:10.1371/journal.pone.0064335.g004

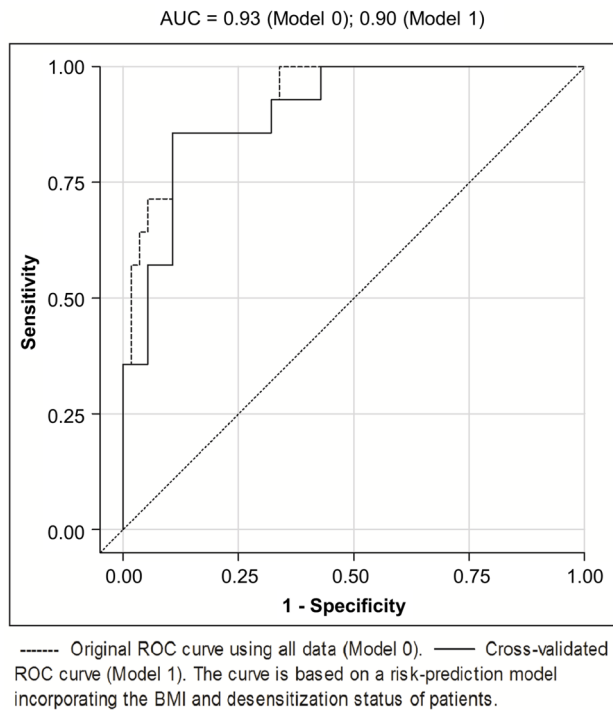


Figure 5. Accuracy in Predicting CCU Admission of the Final Model using Receiver Operator Characteristics (ROC) Curves.
doi:10.1371/journal.pone.0064335.g005

[32,33]. Therefore, rapid fluid therapy at the early stage of sepsis is vital. It also modulates inflammation and prevents further myocardial depression caused by inflammatory cytokines [34]. Hypotension after adequate restoration of LV preload with volume expansion could largely be related to impairment of cardiovascular contractility [35,36]. It could also be speculated that, the subclinical effects of myocardial stunning on the LV, induced by hemodialysis [37,38] could be exaggerated by additional high volume plasmapheresis therapy [19,30] causing

further reduction to the functional cardiovascular reserve, that were measured prior to the start of desensitization treatment. Hence, these crucial pre-operative treatment strategies could have altered and increased patients' surgical cardiac risk status at the time of surgery. Furthermore, these patients also carried the burden of disease chronicity greater than those who did not require desensitization [dialysis vintage: 26 (15–106) vs. 6 (0–32) months, $p = 0.01$; CKD duration: 192 (84–252) vs. 120 (42–211) months, $p = 0.08$). The effect of having no dialysis prior to kidney transplantation on perioperative outcome was examined by ordering patients into 2 groups: pre-dialysis and dialysis dependent. Even though dialysis vintage did not appear to contribute to the risk of perioperative need for CCU, patients who were transplanted pre-emptively had a lower risk of CCU admission than those who were dialysis dependent (Table 1).

PWV was found to be insignificant in predicting perioperative morbidity in this study (Table 4). This could be due to the fact that PWV provides information on the stiffness of the local vessels being studied rather than the systemic arterial stiffness [39]. The latter along with cardiac output (= stroke volume \times heart rate) are determinants of the mean arterial pressure which is an indicator of hemodynamic stability. Although this finding also reflects the limitation of using single surrogate marker as a risk predictor, the value of PWV should not be underestimated due to the recognized pathophysiological role of central arterial stiffness on LV afterload [40]. The outgoing systolic pressure wave that traverses the stiffened aorta is reflected early causing an increase in the augmentation and central pulse pressures. The premature reflection of the systolic waveform also shortens the critical diastolic phase during which the coronaries are being perfused with the end result of myocardial depression [40,41]. This may explain the inverse correlation between PWV and AT as a global measure of functional cardiovascular reserve in our cohort (Pearson correlation, $r = -0.32$, $p = 0.007$).

Many nephrologists and transplant surgeons have concerns about the higher rates of postoperative complications in overweight patients with their possible effects on survival outcomes and hence patients with BMI greater than 35 kg/m² are suspended from transplantation. However, it is important to note that this study has shown that lower BMI is associated with

Table 4. Associations between preoperative anaerobic threshold, clinical variables, arterial compliance and CCU admission (n = 70).

Parameters	Univariate [†] OR (95% CI)	p-value	First Model [‡] OR (95% CI)	p-value	Final Model [‡] OR (95% CI)	p-value
VO ₂ AT, ml/min/kg	0.43 (0.27–0.68)	<0.001*	0.33 (0.14–0.78)	0.01*	0.26 (0.12–0.59)	0.001*
BMI, kg/m ²	0.98 (0.83–1.16)	0.82	0.70 (0.45–1.08)	0.11	0.72 (0.52–0.99)	0.04*
Desensitization (none)	0.11 (0.03–0.40)	0.001*	0.05 (0.01–0.49)	0.01*	0.10 (0.02–0.58)	0.01*
Age, year	1.05 (1.01–1.10)	0.02*	1.07 (0.97–1.17)	0.17	–	–
Gender (male)	0.19 (0.05–0.69)	0.67	0.47 (0.04–5.32)	0.54	–	–
Dialysis vintage, months	1.00 (0.99–1.01)	0.44	0.99 (0.98–1.01)	0.65	–	–
Hypertension	0.46 (0.08–2.82)	0.40	0.30 (0.02–4.67)	0.39	–	–
Dyslipidemia	1.35 (0.41–4.44)	0.62	1.11 (0.14–8.66)	0.92	–	–
Diabetes	1.77 (0.29–1.84)	0.55	0.29 (0.02–5.16)	0.39	–	–
PWV, m/s	1.08 (0.89–1.31)	0.45	–	–	–	–
Augmentation index, %	1.03 (0.98–1.07)	0.25	–	–	–	–

[†]Univariate logistic regression.

[‡]Multiple (binary) logistic regression modeling.

* $p < 0.05$.

doi:10.1371/journal.pone.0064335.t004

significant perioperative morbidity after adjusting for important covariates as shown in *Table 4*. This confirms the findings of other observational studies that low BMIs, often associated with low VO_2peak in hemodialysis patients [42], also carries a high morbidity risk among kidney transplant recipients [43]. Here, it may also be important to recognize the relevance of the reverse epidemiology observed in end-stage renal disease patients in whom high BMI is paradoxically protective [44,45].

The prognostic value of VO_2AT is demonstrated in the risk-prediction model that included both the BMI and desensitization status (*Figure 5*). The AUC was 0.93 for the ROC curve using all the available data to estimate these parameters (Model 0) and using cross validation (Model 1), the AUC was still very high albeit reduced to 0.90. These findings demonstrate that in combination, these 3 variables perform well as a preoperative risk stratification tool for predicting perioperative morbidity among kidney transplant recipients leading to CCU admission.

Even though the design of this study was prospective, the limitation was the relatively small sample size. The study was also not powered for mortality. However, there were no deaths despite the lowest measured VO_2AT being 6.7 ml/min/kg. The majority of CKD patients in this study were kidney recipients of living donor and the results presented here may not be reflective in a study cohort that consisted only of deceased kidney recipients. However, the risk may be comparable to patient population undergoing antibody removal. On the intention-to-treat basis, this study was designed to include all patients including those with high immunological risk. Therefore, the relatively higher than expected rate of CCU admission in our cohort may be due to the large numbers of antibody-incompatible kidney transplants performed in our center compared to an average kidney transplant unit. Finally, questions remain, whether the CPET derived markers of

cardiovascular reserve could be modified or improved (example, with individualized exercise training) with a subsequent reduction in the perioperative risk associated with kidney transplantation or if the measure of VO_2AT could improve the transplant work-up process and increase the inclusion of patients into the transplant programme, who are otherwise excluded based on current clinical criterions.

Conclusions

This is the first prospective study to demonstrate the usefulness of CPET as a preoperative risk stratification tool for patients undergoing kidney transplantation. The study suggests that objective measures of functional cardiovascular reserve, in particular the VO_2AT , have the potential to predict perioperative morbidity in kidney transplant recipients. A further study of larger sample is required to validate the findings.

Acknowledgments

We gratefully acknowledge Mr. Jack Reading and Mrs. Mollie Reading (deceased) for the donation of a CPET machine. We are indebted to Mr. Gordon McGregor (Cardiac Exercise Physiologist) for assistance in the determination of AT. We thank Mrs. Jane Rush and Mr. Nicolas Aldridge (Research Nurses) for their assistance in administrative work and data collection.

Author Contributions

Conceived and designed the experiments: DZ ST RH CI PB. Performed the experiments: ST DZ HI SH. Analyzed the data: ST TH DZ. Contributed reagents/materials/analysis tools: ST TH DZ. Wrote the paper: ST DZ TH RH RB.

References

- Meier-Kriesche HU, Schold JD, Srinivas TR, Reed A, Kaplan B (2004) Kidney transplantation halts cardiovascular disease progression in patients with end-stage renal disease. *Am J Transplant* 4: 1662–1668.
- Sadaghdar H, Chelluri L, Bowles SA, Shapiro R (1995) Outcome of renal transplant recipients in the ICU. *Chest* 107: 1402–1405.
- Older P, Smith R (1988) Experience with the preoperative invasive measurement of haemodynamic, respiratory and renal function in 100 elderly patients scheduled for major abdominal surgery. *Anaesth Intensive Care* 16: 389–395.
- Raggi P, Boulay A, Chasan-Taber S, Amin N, Dillon M, et al. (2002) Cardiac calcification in adult hemodialysis patients. A link between end-stage renal disease and cardiovascular disease? *J Am Coll Cardiol* 39: 695–701.
- Aoki J, Ikari Y, Nakajima H, Mori M, Sugimoto T, et al. (2005) Clinical and pathologic characteristics of dilated cardiomyopathy in hemodialysis patients. *Kidney Int* 67: 333–340.
- Himmelfarb J, Ikizler TA (2010) Hemodialysis. *N Engl J Med* 363: 1833–1845.
- Farr MJ, Lang CC, Lamanca JJ, Zile MR, Francis G, et al. (2008) Cardiopulmonary exercise variables in diastolic versus systolic heart failure. *Am J Cardiol* 102: 203–206.
- Kitzman DW, Higginbotham MB, Cobb FR, Sheikh KH, Sullivan MJ (1991) Exercise intolerance in patients with heart failure and preserved left ventricular systolic function: failure of the Frank-Starling mechanism. *J Am Coll Cardiol* 17: 1065–1072.
- Witte KK, Nikitin NP, Cleland JG, Clark AL (2006) Excessive breathlessness in patients with diastolic heart failure. *Heart* 92: 1425–1429.
- Wasserman K (1997) Diagnosing cardiovascular and lung pathophysiology from exercise gas exchange. *Chest* 112: 1091–1101.
- Cooper CB, Storer TW (2010) Exercise testing and interpretation: Cambridge University Press, New York.
- Guazzi M, Adams V, Conraads V, Halle M, Mezzani A, et al. (2012) EACPR/AHA Scientific Statement. Clinical recommendations for cardiopulmonary exercise testing data assessment in specific patient populations. *Circulation* 126: 2261–2274.
- Belardinelli R, Lacalaprice F, Carle F, Minnucci A, Cianci G, et al. (2003) Exercise-induced myocardial ischaemia detected by cardiopulmonary exercise testing. *Eur Heart J* 24: 1304–1313.
- Pinkstaff S, Peberdy MA, Fabiato A, Finucane S, Arena R (2010) The clinical utility of cardiopulmonary exercise testing in suspected or confirmed myocardial ischemia. *Am J Lifestyle Med* 4: 327–348.
- Older P, Hall A, Hader R (1999) Cardiopulmonary exercise testing as a screening test for perioperative management of major surgery in the elderly. *Chest* 116: 355–362.
- Wilson RJ, Davies S, Yates D, Redman J, Stone M (2010) Impaired functional capacity is associated with all-cause mortality after major elective intra-abdominal surgery. *Br J Anaesth* 105: 297–303.
- Carlisle J, Swart M (2007) Mid-term survival after abdominal aortic aneurysm surgery predicted by cardiopulmonary exercise testing. *Br J Surg* 94: 966–969.
- McCullough PA, Gallagher MJ, Dejong AT, Sandberg KR, Trivax JE, et al. (2006) Cardiorespiratory fitness and short-term complications after bariatric surgery. *Chest* 130: 517–525.
- Higgins R, Lowe D, Hathaway M, Williams C, Lam FT, et al. (2011) Human leukocyte antigen antibody-incompatible renal transplantation: excellent medium-term outcomes with negative cytotoxic crossmatch. *Transplantation* 92: 900–906.
- Gardner-Thorpe J, Love N, Wrightson J, Walsh S, Keeling N (2006) The value of Modified Early Warning Score (MEWS) in surgical in-patients: a prospective observational study. *Ann R Coll Surg Engl* 88: 571–575.
- (2007) National Institute for Health and Clinical Excellence. Acutely ill patients in hospital: recognition of and response to acute illness in adults in hospital.
- Wasserman K, Hansen JE, Sue DY, Stringer WW, Whipp BJ (2005) Principles of exercise testing and interpretation: including pathophysiology and clinical applications. 4 ed. Philadelphia: Lippincott Williams & Wilkins.
- Cheitlin MD, Armstrong WF, Aurigemma GP, Beller GA, Bierman FZ, et al. (2003) ACC/AHA/ASE 2003 Guideline Update for the Clinical Application of Echocardiography: summary article. A report of the American College of Cardiology/American Heart Association Task Force on Practice Guidelines (ACC/AHA/ASE Committee to Update the 1997 Guidelines for the Clinical Application of Echocardiography). *J Am Soc Echocardiogr* 16: 1091–1110.
- Perkins NJ, Schisterman EF (2006) The inconsistency of “optimal” cutpoints obtained using two criteria based on the receiver operating characteristic curve. *Am J Epidemiol* 163: 670–675.
- Chang SH, Coates PT, McDonald SP (2007) Effects of body mass index at transplant on outcomes of kidney transplantation. *Transplantation* 84: 981–987.
- Habedank D, Kung T, Karhausen T, von Haehling S, Doehner W, et al. (2009) Exercise capacity and body composition in living-donor renal transplant recipients over time. *Nephrol Dial Transplant* 24: 3854–3860.
- Meier-Kriesche HU, Port FK, Ojo AO, Rudich SM, Hanson JA, et al. (2000) Effect of waiting time on renal transplant outcome. *Kidney Int* 58: 1311–1317.

28. Gitt AK, Wasserman K, Kilkowski C, Kleemann T, Kilkowski A, et al. (2002) Exercise anaerobic threshold and ventilatory efficiency identify heart failure patients for high risk of early death. *Circulation* 106: 3079–3084.
29. Aalten J, Peeters SA, van der Vlugt MJ, Hoitsma AJ (2011) Is standardized cardiac assessment of asymptomatic high-risk renal transplant candidates beneficial? *Nephrol Dial Transplant* 26: 3006–3012.
30. Higgins R, Lowe D, Hathaway M, Lam FT, Kashi H, et al. (2010) Double filtration plasmapheresis in antibody-incompatible kidney transplantation. *Ther Apher Dial* 14: 392–399.
31. Miller LW (2002) Cardiovascular toxicities of immunosuppressive agents. *Am J Transplant* 2: 807–818.
32. Snell RJ, Parrillo JE (1991) Cardiovascular dysfunction in septic shock. *Chest* 99: 1000–1009.
33. Parrillo JE (1993) Pathogenetic mechanisms of septic shock. *N Engl J Med* 328: 1471–1477.
34. Kumar A, Haery C, Parrillo JE (2000) Myocardial dysfunction in septic shock. *Crit Care Clin* 16: 251–287.
35. Rivers EP, Coba V, Whitmill M (2008) Early goal-directed therapy in severe sepsis and septic shock: a contemporary review of the literature. *Curr Opin Anaesthesiol* 21: 128–140.
36. Rivers EP, Ahrens T (2008) Improving outcomes for severe sepsis and septic shock: tools for early identification of at-risk patients and treatment protocol implementation. *Crit Care Clin* 24: S1–47.
37. Burton JO, Jefferies HJ, Selby NM, McIntyre CW (2009) Hemodialysis-induced repetitive myocardial injury results in global and segmental reduction in systolic cardiac function. *Clin J Am Soc Nephrol* 4: 1925–1931.
38. Burton JO, Jefferies HJ, Selby NM, McIntyre CW (2009) Hemodialysis-induced cardiac injury: determinants and associated outcomes. *Clin J Am Soc Nephrol* 4: 914–920.
39. Mackenzie IS, Wilkinson IB, Cockcroft JR (2002) Assessment of arterial stiffness in clinical practice. *QJM* 95: 67–74.
40. London GM (2003) Cardiovascular calcifications in uremic patients: clinical impact on cardiovascular function. *J Am Soc Nephrol* 14: S305–309.
41. O'Rourke MF, Kelly RP (1993) Wave reflection in the systemic circulation and its implications in ventricular function. *J Hypertens* 11: 327–337.
42. Sezer S, Elsurur R, Ulubay G, Ozdemir FN, Haberal M (2007) Factors associated with peak oxygen uptake in hemodialysis patients awaiting renal transplantation. *Transplant Proc* 39: 879–882.
43. Meier-Kriesche HU, Arndorfer JA, Kaplan B (2002) The impact of body mass index on renal transplant outcomes: a significant independent risk factor for graft failure and patient death. *Transplantation* 73: 70–74.
44. Kalantar-Zadeh K, Block G, Humphreys MH, Kopple JD (2003) Reverse epidemiology of cardiovascular risk factors in maintenance dialysis patients. *Kidney Int* 63: 793–808.
45. Kalantar-Zadeh K, Kopple JD, Kilpatrick RD, McAllister CJ, Shinaberger CS, et al. (2005) Association of morbid obesity and weight change over time with cardiovascular survival in hemodialysis population. *Am J Kidney Dis* 46: 489–500.