

Supplementary online only materials

Table S1. Prevalence of DSM-IV anxiety disorder diagnoses (%) in VP/VLBW and term comparison individuals at age 6, 8, and 26 years

<i>DSM IV Diagnoses (Mannheimer Parent Interview)</i> <i>% at age 6 years</i>	VLBW / VP (n = 218)	Term (n = 229)	OR	95% CI
Any anxiety disorder	10.0	11.4	0.85	(0.47–1.56)
Social phobia	2.4	5.7	0.34	(0.12–0.98)
Specific phobia, animals	1.4	4.4	0.32	(0.09 – 1.16)
Specific phobia, nat. env.	1.9	0.4	4.41	(0.49 – 39.74)
Specific phobia, blood-injection	3.8	2.6	1.27	(0.43–3.76)
Specific phobia, situational	1.9	2.2	0.87	(0.23 – 3.27)
Specific phobia, other type	1.9	0.9	2.19	(0.40 – 12.10)
Generalized anxiety disorder	0.5	0.0	-	-
<i>DSM IV Diagnoses (Mannheimer Parent Interview)</i> <i>% at age 8 years</i>	VLBW / VP (n = 232)	Term (n = 229)	OR	95% CI
Any anxiety disorder	11.8	6.6	2.10	(1.08–4.10)
Social phobia	2.8	1.7	1.63	(0.44–5.98)
Specific phobia, animals	2.8	2.2	1.31	(0.39 – 4.36)
Specific phobia, nat. env.	2.8	0.9	3.32	(0.66 – 16.64)
Specific phobia, blood-injection	5.7	1.3	4.65	(1.31-16.55)
Specific phobia, situational	2.4	1.7	1.37	(0.36 – 5.15)
Specific phobia, other type	1.9	1.3	1.46	(0.32 – 6.58)
School phobia	1.0	0.4	2.21	(0.20 – 24.59)
Generalized anxiety disorder	-	-	-	-
<i>DSM IV Diagnoses (DIAX M-CIDI) % at age 26 years</i>	VLBW / VP (n = 200)	Term (n = 197)	OR	95% CI
Any anxiety disorder	33.0	28.4	1.27	(0.82–1.96)
Panic attack	8.0	12.1	0.63	(0.32 – 1.22)
Agoraphobia	4.0	2.6	1.60	(0.51 – 4.98)
Agoraphobia w/o. panic attacks	2.5	1.0	2.50	(0.48 – 13.04)
Panic disorder with agoraphobia	1.0	1.0	0.99	(0.14 – 7.06)
Panic disorder w/o. agoraphobia	1.0	2.0	0.49	(0.09 – 2.69)
Social phobia	8.0	2.0	3.90	(1.27–11.97)
Specific phobia, animal type	3.5	7.1	0.47	(0.19 – 1.20)
Specific phobia, nat. env. type	6.5	4.5	1.45	(0.60 – 3.48)
Specific phobia, blood-injection	9.5	3.0	3.62	(1.40–9.39)
Specific phobia, situational type	2.5	3.1	0.82	(0.25 – 2.72)
Specific phobia, other type	0.5	1.0	0.49	(0.04 – 5.45)
Phobic disorder NOS (not otherwise specified)	5.5	2.0	2.81	(0.88 – 8.98)
Generalized anxiety disorder	3.0	1.5	2.00	(0.49 – 8.11)
GMC Anxiety disorder (due to general medical condition)	0.5	0.0	-	-

Please note: Additional DSM anxiety disorder subtypes not specified above were inquired as part of the DIA-X/MCIDI interview but there were no diagnosed cases

Table S2. Item distributions for the social support from romantic partner index

Social support from romantic partner - All items were summarized and reverse coded	VLBW / VP (<i>n</i> = 200)	Term (<i>n</i> = 197)
Never dated	17.0%	0.5%
Never had sexual intercourse	23.5%	0.5%
Never in serious romantic relationship	25.5%	3.0%
Partner had been very mean and been shouting	32.2%	29.8%
Partner has beaten, pushed or physically attacked	5.4%	7.9%
Partner forced sex	2.0%	3.1%
Partner forbids going out, or opens private mail or text messages	16.8%	22.5%
Somewhat or very poor relations with the opposite sex	17.2%	9.6%

Table S3. Prevalence of DSM-IV emotional disorder diagnoses (%) comparing SGA and AGA individuals at age 6, 8, and 26 years

<i>DSM IV Diagnoses</i>	Age 6 years				Age 8 years				Age 26 years			
	SGA (n=111)	AGA (n=336)	OR	95% CI	SGA (n=114)	AGA (n=347)	OR	95% CI	SGA (n=87)	AGA (n=310)	OR	95% CI
Any Mood Disorder	0.9	0.9	1.01	(0.10–9.80)	1.8	0.0	-	-	27.6	21.9	1.36	(0.79–2.33)
Any Anxiety Disorder	12.6	10.4	1.24	(0.64–2.40)	9.6	9.2	1.05	(0.51–2.16)	33.3	30.0	1.17	(0.70–1.94)

Please note: All available participants with full clinical interviews assessed at 6, 8, and 26 years were included; comparing those born VP/VLBW and SGA (*n*=69) with healthy term AGA comparisons (*n*=179) did not show any group differences either.

Table S4. Prevalence of DSM-IV emotional disorder subthreshold symptoms (%) comparing VP/VLBW and term individuals at age 6, 8, and 26 years

<i>DSM IV Diagnoses</i>	Age 6 years				Age 8 years				Age 26 years			
	VLBW/VP (n=218)	Term (n=229)	OR	95% CI	VLBW/VP (n=232)	Term (n=229)	OR	95% CI	VLBW/VP (n=200)	Term (n=197)	OR	95% CI
Any Mood Disorder	1.5	2.9	0.50	(0.17–1.52)	2.3	0.3	7.34	(0.91–58.99)	43.0	41.6	1.06	(0.71 – 1.58)
Any Anxiety Disorder	44.2	38.1	1.29	(0.94–1.77)	44.3	33.9	1.56	(1.13 – 2.14)	35.5	31.5	1.20	(0.79 – 1.82)

Please note: All available participants with full clinical interviews assessed at 6, 8, and 26 years were included. Emotional disorder subthreshold symptoms were defined as any mood or anxiety disorder symptoms that did not fulfill criteria for clinical diagnosis because one inclusion and/or exclusion criterion was missing. This applies to all participants who answered in the affirmative to one of the screening questions but not fulfilled all skip rule criteria.

Figure S1. Sample flow diagram of the Bavarian Longitudinal Study participants at age 26 years

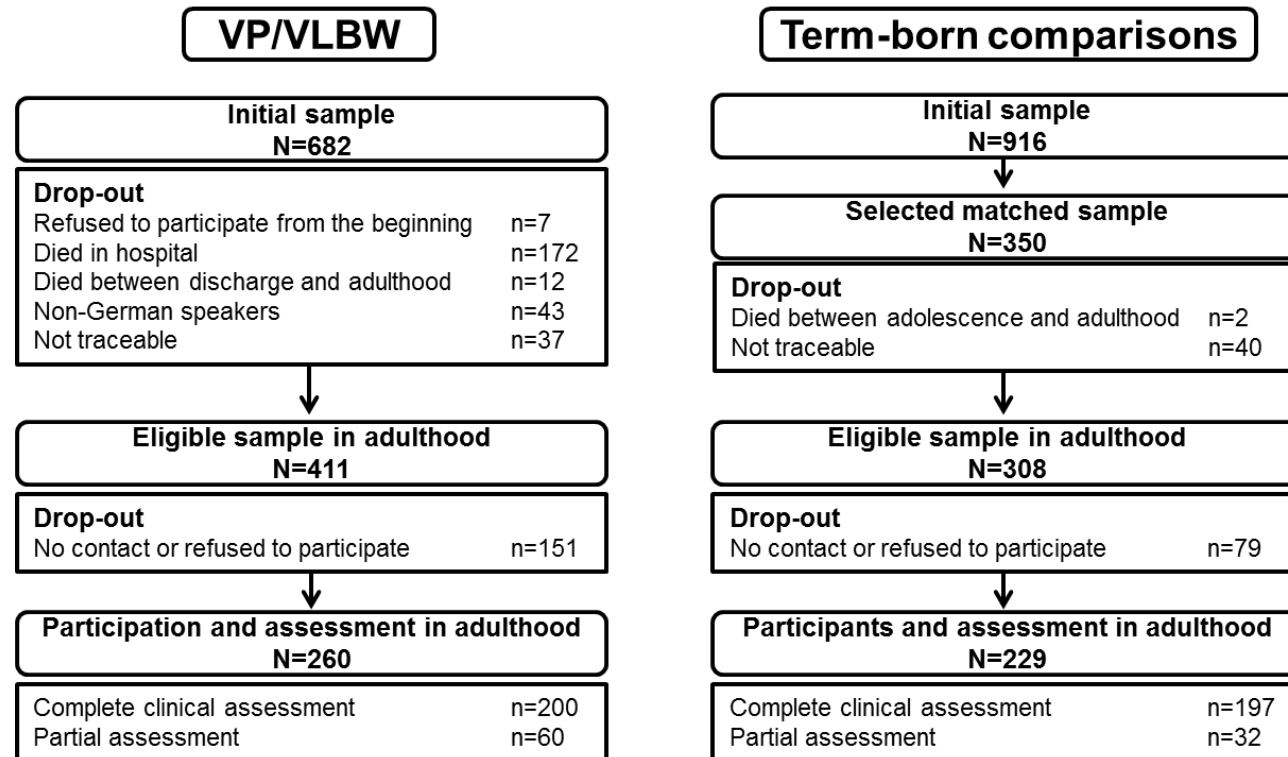
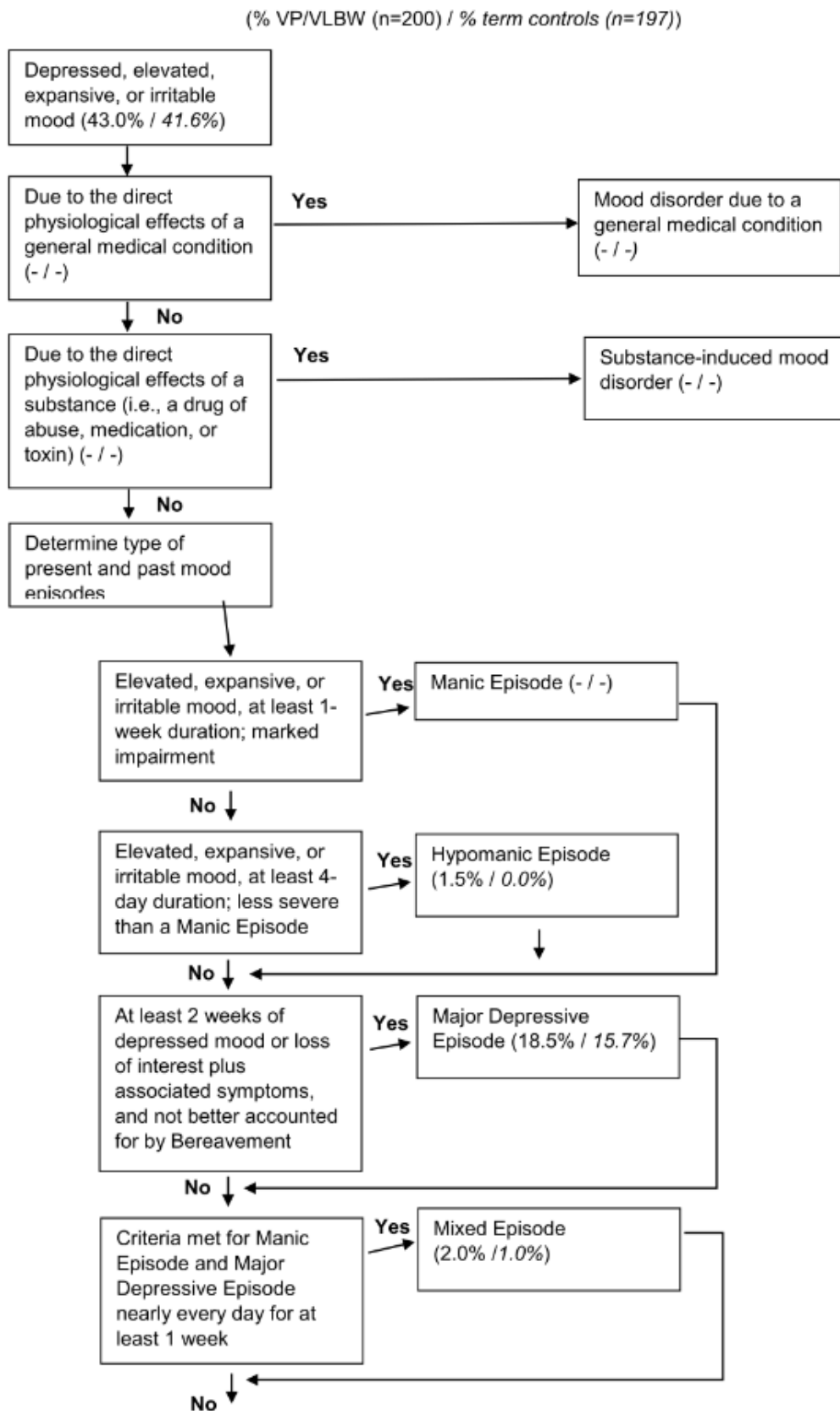


Figure S2. Differential diagnosis of DSM-IV mood disorders according to the DIA-X/MCIDI at age 26 years



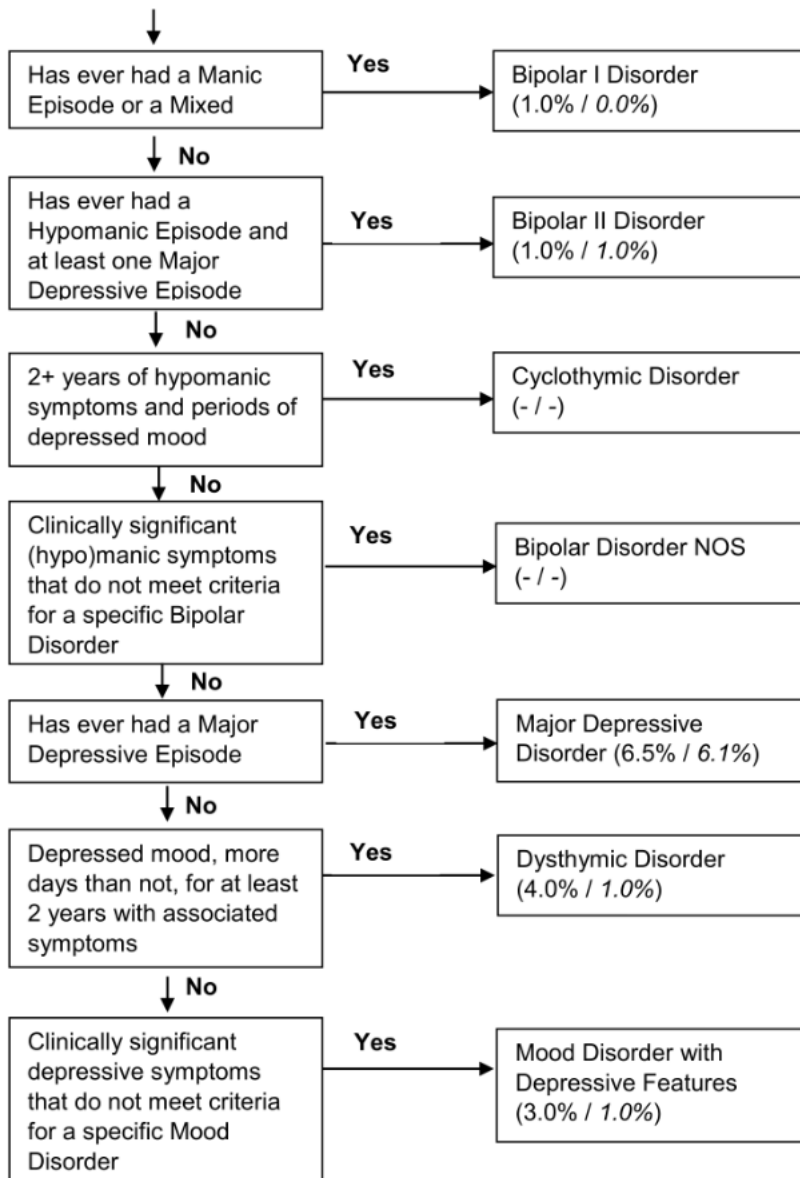


Figure S3. Mediation models for VP/VLBW and term comparison adults at 26 years (N=397)

