

Original citation:

Armoiry, Xavier, Obadia, Jean-François, Pascal, Léa, Polazzi, Stéphanie and Duclos, Antoine (2018) Comparison of transcatheter to surgical aortic valve implantation in high risk patients : a nationwide study in France. The Journal of Thoracic and Cardiovascular Surgery . doi:10.1016/j.jtcvs.2018.02.092

Permanent WRAP URL:

<http://wrap.warwick.ac.uk/101419>

Copyright and reuse:

The Warwick Research Archive Portal (WRAP) makes this work by researchers of the University of Warwick available open access under the following conditions. Copyright © and all moral rights to the version of the paper presented here belong to the individual author(s) and/or other copyright owners. To the extent reasonable and practicable the material made available in WRAP has been checked for eligibility before being made available.

Copies of full items can be used for personal research or study, educational, or not-for-profit purposes without prior permission or charge. Provided that the authors, title and full bibliographic details are credited, a hyperlink and/or URL is given for the original metadata page and the content is not changed in any way.

Publisher's statement:

© 2018. This manuscript version is made available under the CC-BY-NC-ND 4.0 license <http://creativecommons.org/licenses/by-nc-nd/4.0/>

A note on versions:

The version presented here may differ from the published version or, version of record, if you wish to cite this item you are advised to consult the publisher's version. Please see the 'permanent WRAP URL' above for details on accessing the published version and note that access may require a subscription.

For more information, please contact the WRAP Team at: wrap@warwick.ac.uk

1 **Title page**

2

3 **Title:** Comparison of transcatheter to surgical aortic valve implantation in high risk patients: A
4 nationwide study in France.

5

6 **Authors:**

7 Xavier Armoiry¹, *PharmD, PhD* ; Jean-François Obadia², *MD, PhD* ; Léa Pascal³, *PhD* ;
8 Stéphanie Polazzi⁴, *PhD* ; Antoine Duclos⁵, *MD, PhD*

9

10 **Affiliations:**

11 ¹ University of Warwick, Warwick medical school, Division of Health Sciences, Gibbet Hill
12 road, CV47AL Coventry, England/ Hospices Civils De Lyon / UMR-CNRS 5510/MATEIS,
13 69008, Lyon, France.

14 ² Service de Chirurgie Cardio-thoracique et Transplantation, Hôpital Cardio-thoracique Louis
15 Pradel, Lyon-Bron, Avenue du Doyen Lépine, 69500 Bron, France.

16 ³ Hospices Civils de Lyon, Pôle Information Médicale Evaluation Recherche, Avenue
17 Lacassagne, 69008 Lyon, France.

18 ⁴ Hospices Civils de Lyon, Pôle Information Médicale Evaluation Recherche, Avenue
19 Lacassagne, 69008 Lyon, France/ Univ. Lyon, Université Claude Bernard Lyon 1, HESPER
20 EA 7425, F-69008 Lyon, France.

21 ⁵ Hospices Civils de Lyon, Pôle Information Médicale Evaluation Recherche, Avenue
22 Lacassagne, 69008 Lyon, France/ Univ. Lyon, Université Claude Bernard Lyon 1, HESPER
23 EA 7425, F-69008 Lyon, France/Center for Surgery and Public Health, Brigham and Women's
24 Hospital - Harvard Medical School, Boston, US

25 **Conflict of interest statement:**

26 XA, LP, SP, AD: none to declare

27 JFO received personal fees by Edwards and Medtronic from activities conducted outside the
28 submitted work

29

30 **Source of funding:**

31 This research did not receive any specific grant from funding agencies in the public,
32 commercial, or not-for-profit sectors.

33

34 **Corresponding author**

35 Dr Xavier Armoiry

36 Division of Health Sciences, Warwick Medical School, University of Warwick,
37 CV47AL Coventry, England ; +44 (0)24761 51194; armoiryxa@gmail.com

38

39 **Article word count:** 2996

40

41

42

43 **Glossary of Abbreviations:**

44

45 AHA/ACC: American Heart Association/American College of cardiology

46 AVR: Aortic valve replacement

47 DRG: Diagnosis-Related-Group

48 ESC: European Society of Cardiology

49 GEE: Generalized Estimating Equations

50 HR: Hazard ratio

51 ICD: International Classification of Diseases

52 PMSI: French Medical Information System

53 PSM: Propensity-score matching

54 RCT: Randomised controlled trial

55 SAVR: Surgical aortic valve replacement

56 TAVI: Transcatheter aortic valve implantation

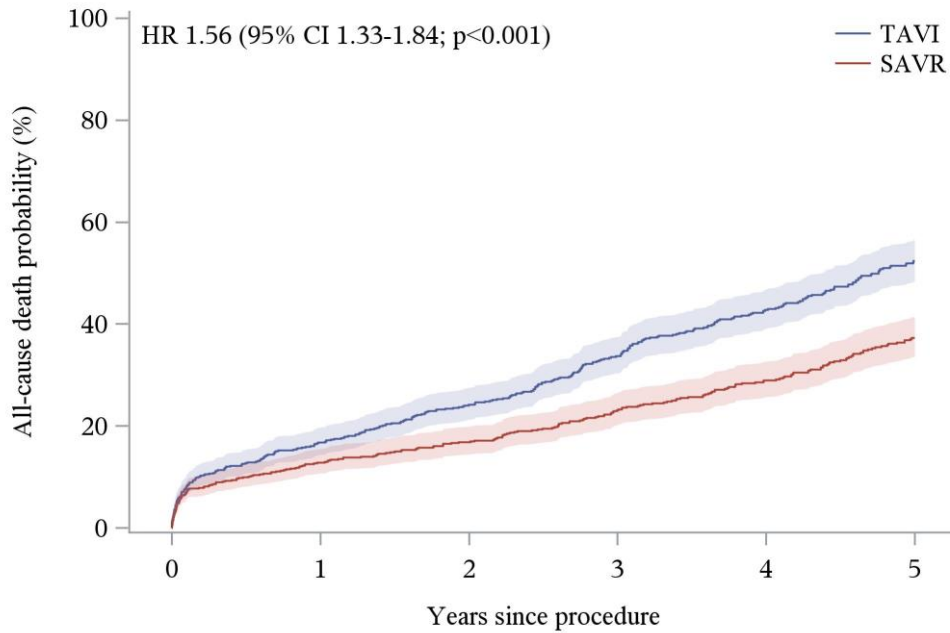
57

58

59 **Central picture**

60

61



	Number at risk					
TAVI	799	587	489	388	304	200
SAVR	799	604	543	456	378	267

62

63 **Legend: Cumulative probability of all-cause in-hospital mortality**

64 Time varying outcome with shaded areas showing 95% confidence intervals based on 1-Kaplan-Meier
65 estimation of TAVI (transcatheter aortic valve implantation) vs. SAVR (surgical aortic valve replacement); HR =
66 Hazard ratio.

67

68

69 **Central message**

70 In patients with high-surgical risk, our study using real-world evidence shows TAVI to be
71 associated with a greater risk of mortality after 1 year which is sustained up to 5 years

72

73 **Perspective statement**

74 The extension of TAVI indications in patients other than those with high or prohibitive-
75 surgical risk should be cautious until further data, either based on RCTs or real-world
76 evidence, are made available to inform on the relative long-term effectiveness of TAVI
77 compared to SAVR.

78

79 **Structured Abstract (241 words)**

80

81 **Objective:** To compare the clinical outcomes and direct costs at 5 years between TAVI or
82 SAVR using real-world evidence.

83 **Methods:** We performed a nationwide longitudinal study using data from the French Hospital
84 Information System over 2009-2015. We matched inside hospitals two cohorts of adults who
85 underwent TAVI or SAVR in 2010 on propensity score based on patients characteristics.
86 Outcomes analysis included mortality, morbidity, and total costs and with a maximum 60-
87 month follow-up. Clinical outcomes were compared between cohorts using Hazard Ratios
88 (HR) estimated from Cox proportional hazards model for all-cause death, and from Fine and
89 Gray's competing risk model for morbidity.

90 **Results:** Based on a cohort of 1598 patients (799 in each group) from 27 centers, a higher risk
91 of death was observed after 1 year with TAVI compared to SAVR (16.8% vs. 12.8%
92 respectively; HR 1.33, 95%CI 1.02-1.72) and was sustained up to 5 years (52.4% vs. 37.2%;
93 HR 1.56, 95%CI 1.33-1.84). At 5 years, the risk of stroke was increased (HR 1.64, 95%CI
94 1.07-2.54) as was myocardial infarction (HR 2.30, 95%CI 1.12-4.69) and pacemaker
95 implantation (HR 2.40, 95%CI 1.81-3.17) after TAVI. The hospitalization costs per patient at
96 5 years were €69,083 after TAVI and €55,687 after SAVR ($p < 0.001$).

97 **Conclusions:** In our study, high-risk patients after TAVI harbor a greater risk of mortality and
98 morbidity at 5 years compared to SAVR and higher hospitalizations costs. Those results
99 should encourage to be more cautious before enlarging the indications of TAVI.

100

101 **Introduction**

102 More than 15 years after the first-in-man case,¹ transcatheter aortic valve implantation (TAVI)
103 continues to revolutionize the management of severe aortic stenosis and has become over time
104 a routinely performed procedure in many cardiac centers worldwide. In early 2014, more than
105 100,000 had been performed.² While the benefit of TAVI was initially demonstrated in
106 patients ineligible or at high-surgical risk,^{3,4} a growing number of studies have evaluated
107 TAVI in patients with low-to-intermediate risk.^{5,6} This has contributed to the currently
108 observed trend toward enlarged indications of TAVI in patients that would otherwise undergo
109 surgical aortic valve replacement (SAVR). Several randomised controlled trial (RCTs)
110 conducted among carefully selected populations have shown promising results on the clinical
111 effectiveness and safety of TAVI compared to surgery.^{4,5,7} Conversely, evidence from real-
112 world data indicate a better outcome with surgery compared to TAVI.⁸ Overall, the largest
113 reported cohorts have a follow-up limited to one to three years in maximum^{9,10} which is
114 insufficient to provide a long-term view after aortic valve replacement (AVR).
115 This nationwide study aimed to compare the long-term clinical outcomes and costs between
116 patients undergoing TAVI and SAVR.

117

118 **Material and Methods**

119 **Study design and participants**

120 We conducted a propensity-matched cohort study based on the French Medical Information
121 System (*programme de médicalisation des systèmes d'information [PMSI]*). The PMSI is a
122 large hospital database with prospectively collected data from all public and private hospitals
123 in France. The database is routinely implemented for the purpose of care reimbursement
124 leading to very strong accuracy and exhaustive collection of the data. As a consequence no
125 patients were lost to follow-up during the considered period. Moreover, the PMSI has a

126 system of coding with strict variable definitions and a subset of records audited on a regular
127 basis in order to avoid an excessive high rates of coding errors. Inpatient's stays are converted
128 into one Diagnosis-Related-Group (DRG) based on standard discharge abstracts containing
129 compulsory information about the patient, primary and secondary diagnoses, using the
130 International Classification of Diseases (10th revision - ICD-10), as well as procedural codes
131 associated with the care provided.

132 We selected all adults who underwent TAVI or SAVR in French institutions between 1,
133 January, 2010 and 31, December, 2010. In order to homogenize study population, we only
134 selected cases with a main diagnosis of heart failure, rheumatic or nonrheumatic aortic valve
135 disease (ICD-10 codes I06*, I35*, or I50*). Patients <18 years, having experienced
136 ambulatory care, or with data inaccuracies were not retained in final cohorts. Within the index
137 hospitalization stay, we extracted patients' demographics and socioeconomic characteristics,
138 co-morbidities according to Charlson and/or Elixhauser algorithms¹¹, the type and emergency
139 context of surgical procedure, and length of stay. We subsequently used patient unique
140 anonymous number in order to link his/her stays in acute and rehabilitation care, allowing the
141 extraction of hospitalization-related data from 12 months preceding TAVI and SAVR to a
142 maximum of 60 months thereafter.

143

144 **Outcomes**

145 The primary endpoint was in-hospital mortality from the index hospitalization up to five years
146 following TAVI or SAVR. Other outcomes included the occurrence of postoperative
147 admission in intensive (≥ 2 nights) or critical care unit (≥ 5 nights), reoperation, stroke,
148 myocardial infarction, or pacemaker implantation.

149 Economic evaluation was performed from the hospital perspective based on the total number
150 of hospitalization stays, days, and costs over 5 years in acute or rehabilitation care. We valued

151 in Euros (€) the in-hospital medical resources consumptions using average expenditures as
152 observed in the national cost scale for the medicine, surgery, and obstetrics sector.

153

154 **Statistical analysis**

155 To control for the nonrandom assignment of patients to one of the two procedures, we formed
156 matched pairs of TAVI and SAVR patients using propensity scores. First, propensity scores
157 were estimated as the predicted probability of a patient undergoing TAVI using a logistic
158 regression model including the following covariates: sex, age (continuous, with linear,
159 quadratic and cubic terms), household income (continuous), number of days spent in acute
160 care hospitalizations the year before the index stay (continuous, with linear, quadratic and
161 cubic terms), emergency procedure, and a selection of comorbidities (i.e. congestive heart
162 failure, cardiac arrhythmia, pulmonary circulation disorder, peripheral vascular disease,
163 hypertension, chronic pulmonary disease, diabetes, renal disease, liver disease, obesity,
164 myocardial infarction, and cerebrovascular disease). We then matched patients with the
165 closest propensity score inside hospital to control for confounders at hospital level, using a
166 greedy 1:1 algorithm without replacement and requiring that the logit of the propensity score
167 of a patient who underwent TAVI and one who underwent SAVR be within 0.20 standard
168 deviations of one another. Standardized differences were used to assess the degree of balance
169 between the matched groups for baseline characteristics. An absolute standardized difference
170 of ≤ 0.10 was chosen to indicate a negligible difference in the mean or prevalence of a variable
171 between groups. Balance for continuous variables was also assessed with graphical methods
172 (side-by-side boxplots, empirical cumulative distribution functions, empirical QQ-plots) to
173 compare the distributions across the two groups. Sensitivity analysis was conducted for the
174 main outcomes (all-cause death and costs) with 1:1 nearest neighbor matching with
175 replacement within caliper of 0.20 standard deviation of the logit of the propensity score, with

176 the inclusion of weights in the outcome models (TAVI patients were weighted at 1 and the
177 weight for a SAVR patient was the number of times it was matched to a TAVI patient).

178

179 Categorical variables were presented using absolute and relative frequencies and continuous
180 variables were presented using medians and interquartile ranges. Estimates were accompanied
181 with the corresponding 95% CI and p-values of less than 0.05 were considered to indicate
182 statistical significance.

183

184 Clinical outcomes were assessed as time-to-event variables, and were evaluated at different
185 time points t (1 month, 6 months, then yearly up to 5 years after index procedure). Cumulative
186 probabilities of events over time were estimated with the non-parametric 1-Kaplan-Meier
187 estimator for all-cause death, and with the non-parametric Cumulative Incidence Functions
188 estimator using competing risk of death for postoperative stay in intensive or critical care unit,
189 reoperation, stroke, myocardial infarction, and pacemaker. To compare the effect of procedure
190 (TAVI vs. SAVR), Hazard Ratios (HR) were estimated between time 0 and time t , from Cox
191 proportional hazards model for all-cause death, and from Fine and Gray's model using
192 competing risk of death for other clinical outcomes, with robust variance estimator to account
193 for clustering within matched pairs. A sensitivity analysis was performed for the main clinical
194 outcome (all-cause death) with a nested frailty model to take into account the two hierarchical
195 levels of clustering (matched pairs nested within hospitals).

196

197 Health care utilization (number of hospitalization stays, days, and costs) were assessed as
198 count variables, and were evaluated at different time points t . The rate of health care
199 utilization per patient-year was the total number of health care utilization in each procedure
200 group divided by the total follow-up duration (date of the procedure until the date of death or

201 end of the study period) of all patients in that group between time 0 and time t . The
202 consequent rate ratio (RR) comparing TAVI to SAVR was estimated using Generalized
203 Estimating Equations (GEE) with a log link, a Poisson distribution, and the log of the follow-
204 up time as an offset. Robust standard errors were estimated using an independent or
205 exchangeable working correlation structure and clustering on matched-pairs to account for
206 over dispersion (dependency within matched pairs and within patients experiencing repeated
207 events). A sensitivity analysis was performed for the main economic outcome (costs) with a
208 multilevel Poisson regression model to take into account the two hierarchical levels of
209 clustering (matched pairs nested within hospitals). Mean cumulative numbers of health care
210 utilization per person at time t were estimated by multiplying the predicted rate by t .
211 Sensitivity analyses were performed with a Negative Binomial distribution for all economic
212 outcomes and with a Gamma distribution for costs, providing rate ratio estimations.

213

214 Data manipulation and analyses were performed using SAS (version 9.4; SAS Institute Inc.,
215 Cary, NC) and R (version 3.3.2; R Core Team) softwares.

216

217 **Ethics approval:**

218 This study was strictly observational and we used anonymous data retrospectively. Therefore,
219 in accordance to the French regulation on “non-interventional clinical research”, the written
220 informed consent from the participants or the authorization from an ethical committee was not
221 required.

222

223

224 **Results**

225

226 **Participants/descriptive data**

227 During Year 2010, 1334 patients underwent TAVI and 6,695 patients underwent SAVR at 27
228 French hospitals. After applying the selection and matching criteria, 799 pairs of patients were
229 retained in final analysis (Supplemental 1). Cohorts' baseline characteristics are listed in
230 Table 1 with negligible difference between those (evolution pre and post-matching is
231 presented in the Supplemental 2), and distribution of the propensity scores pre and post-
232 matching are represented in the Supplemental 5.

233

234 **Short-term clinical outcomes**

235 The risk of hospital death from any cause at 30 days, 6 months, and 1 year was respectively
236 7.5%, 12.7%, and 16.8% in the TAVI group, and 6.6%, 10.0%, and 12.8% in the SAVR
237 group, and was not different between both groups at 30 days and 6 months (respectively HR
238 1.15, 95%CI 0.79-1.68; 1.29, 95%CI 0.96-1.73) but was higher after TAVI at 1 year (HR
239 1.33, 95%CI 1.02-1.72).

240 At 1 year, there was no significant difference in the occurrence of reoperation (1.9% with
241 TAVI vs. 0.9% with SAVR) or myocardial infarction (0.6% with TAVI vs. 0.1% with
242 SAVR), but the risk of stroke was higher after TAVI (2.4% vs. 0.9% respectively; HR 2.73,
243 95%CI 1.14-6.53) as was the risk of new pacemaker implantation (14.5% vs. 4.9%
244 respectively; HR 3.19, 95%CI 2.23-4.56).

245

246 **Long-term clinical outcomes**

247 The cumulative probabilities and HR of each clinical outcome from 1 to 5 years are presented
248 in Table 2, accompanied with the cumulative probability curves for death (Central figure) and
249 for the other clinical outcomes (Supplemental 6).

250 A higher risk of death was observed 2 years after TAVI compared to SAVR (24.2% vs. 16.8%
251 respectively; HR 1.47, 95%CI 1.17-1.84) and sustained up to 5 years (52.4% vs. 37.3%
252 respectively; HR 1.56, 95%CI 1.33-1.84).

253 At 5 years, there was a trend toward a higher risk of reoperation after TAVI compared to
254 SAVR (2.3% vs. 1.1%: HR 2.01, 95%CI 0.90-4.50), while the risk of stroke significantly
255 increased (6.9% vs. 4.3% respectively; HR 1.64, 95%CI 1.07-2.54), as was myocardial
256 infarction (3.1% vs. 1.4% respectively; HR 2.30, 95%CI 1.12-4.69), or new pacemaker
257 implantation (20.4% vs. 9.3% respectively; HR 2.40, 95%CI 1.81-3.17).

258

259 **Hospitalization data and cost evaluation**

260 Hospitalization data and cost evaluation up to 5 years after the procedure are presented in
261 Table 3 and figure 1. At 1 year, the mean cumulative hospitalization costs per patient were
262 €42,238 after TAVI and €35,128 after SAVR (RR 1.20, 95%CI 1.13-1.28). The increased cost
263 with TAVI was mainly attributed to the procedure performed during the index stay and was
264 sustained up to 5 years (€69,083 vs. €55,687 respectively; RR 1.24, 95%CI 1.13-1.36). The
265 mean cumulative numbers of hospitalization stays and of days of hospitalization per patient
266 were similar at any time in both groups, except for the mean cumulative number of days of
267 hospitalization at 1 year which was lower after TAVI (RR 0.86, 95%CI 0.79-0.94).

268

269 **Sensitivity analysis for the main outcomes**

270 Matching with replacement resulted in 1089 matched-pairs of TAVI and SAVR and the same
271 trends for all-cause death and costs, although effects were attenuated and results at 1 year up
272 to 3 years became non-significant (Supplemental 7).

273 In the cohort matched without replacement, the nested frailty model for all-cause death
274 resulted in very similar effects (Supplemental 8), whereas the multilevel Poisson regression
275 for costs did not converge.

276

277

278 **Discussion**

279 **Principal findings**

280 We have used real-world data from a nationwide database including 100% of the cases during
281 the considered period to compare the long-term clinical outcomes between TAVI and SAVR
282 in two propensity score matched cohorts of patients. Our findings showed an increased risk of
283 death after TAVI at 1 year that increased up to 50% at 5 years. There were also a much higher
284 risk of stroke, myocardial infarction and pacemaker implantation after TAVI with higher
285 cumulated costs relating with the index hospitalisation stay.

286

287 **Comparison with other studies**

288 The entire TAVI population (n=1274) that we identified from the database was also part of
289 the *France 2* French registry that enrolled 3195 high-risk patients (mean Logistic Euroscore
290 21% / 74% with a Logistic Euroscore \geq 20%) between January 2010 and October 2011.³

291 While the entire SAVR population had a lower risk compared to the entire TAVI population,
292 we selected a cohort of patients with much higher risk profile within the entire SAVR
293 population. Hence, we assume that matching between these populations allowed us to
294 compare similar cohorts of high-risk patients.

295 Our survival estimates are supported by a longer follow up and larger study sample than
296 previous publications comparing the two procedures (Table 4). Among RCTs that included
297 high-risk patients (Logistic Euroscore 18%-29%), there was no significant difference on the

298 risk of death at three years¹² and five years.¹³ The results from our study in high-risk patients
299 contrast greatly with those reported in these two RCTs. While our study outcomes after TAVI
300 were comparable to those in the US COREVALVE RCT, the survival after SAVR was far
301 better compared to US COREVALVE. Among the four published propensity-score
302 matching (PSM) cohort analyses that selected high-risk patients, two studies^{10, 14} showed no
303 difference in mortality after 1 year while two other studies reported a greater mortality with
304 TAVI from the first year and up to two¹⁵ or four¹⁶ years of follow-up. This increase in
305 mortality with TAVI compared to SAVR is consistent with our findings and has been recently
306 emphasized in a meta-analysis of studies that used PSM.⁸

307 The magnitude of the mortality-increase after TAVI compared to SAVR raises the question
308 on the comparability of TAVI and SAVR cohorts matched using PSM and will be further
309 discussed. However, we believe that the systematic presence of unidentified confounders
310 within healthcare databases used across different country settings is unlikely.

311

312 Although our study did only include high-risk patients, we also examined the published
313 outcomes after TAVI or SAVR in people with intermediate-risk patients (Table 4) owing to
314 the increase used of TAVI in this population.

315 Three RCTs that included people with a lower surgical risk reported a similar risk of mortality
316 but to date the follow-up is limited to a maximum of two-years.^{5, 17-19} Two other studies using
317 PSM in people with similar risk-profile showed a higher risk of death after TAVI at 3 years.⁹
318 ²⁰Conversely, Thourani et al.²¹ reported a reduced mortality after TAVI at 1 year but these
319 latter results are however subject to caution given the presence of several major
320 methodological flaws pertaining to the covariates that were included in the propensity score
321 model.²²

322

323 We have observed an increased risk of stroke at five years with TAVI compared to SAVR.
324 We cannot provide interpretation of these findings based on data pertaining to onset of post-
325 procedural atrial fibrillation or use of anticoagulation regimen at follow-up. One might
326 speculate that TAVI patients mostly received dual antiplatelet therapy with clopidogrel and
327 aspirin while SAVR patients received mostly VKA or just aspirin for three months. However,
328 in the absence of formal recommendations on anticoagulation management, we believe there
329 are lots of variations across centers.

330

331 Our study provides further information on hospital resource consumption between TAVI and
332 SAVR. The cumulative costs were higher after TAVI while there were no differences at 5
333 years regarding the number of stays or days consumed at hospital. Furthermore, the lower
334 number of hospitalisations contrasts with the higher total costs at 1 year post-TAVI compared
335 to SAVR, which can be explained by the cost of TAVI device during the index stay. Although
336 our study was not designed as a cost-effectiveness evaluation, our results showing a reduced
337 survival and higher costs with TAVI suggest that TAVI would be dominated by SAVR.

338

339 **Limitations**

340 Our study carries several limitations. We identified two cohorts of patients from the French
341 PMSI database, which is increasingly used in health service research given the exhaustive
342 collection of medical information at the whole country population.^{23,24} To control for the
343 non-random assignment of patients between TAVI and SAVR procedures, we used
344 propensity-score-matching-adjustment based on a high number of patient characteristics and
345 with control for confounders at hospital level. The risk of bias with PSM studies is to omit
346 some potential confounders that can alter the comparability of populations and therefore
347 threaten the validity of outcome measures.²⁵ The PMSI database does not enable to precisely

348 calculate the Euroscore because the clinical variables that are available are not strictly those
349 listed or are not as accurately defined among the factors that are accounted for in the
350 Euroscore calculation. Because data granularity did not allow us to accurately describe every
351 patients profile with respect to the surgical risk, we added the number of hospitalization days
352 in acute care consumed the year preceding the index stay to account for unmeasured
353 confounders. Among variables available within the PMSI database, we chose in our
354 propensity-score based method those with the most clinical relevance to discriminate the
355 mortality/morbidity risk of populations but also accounting for those with a sufficient degree
356 of validity. We are aware that the PMSI database variables may also lack of granularity to
357 account for factors such as patient frailty or the complexity of the procedure.

358 A weakness of large hospital databases is the miscoding of diagnoses during hospital stays
359 that can underestimate patient's comorbidities.²⁶ This issue is not specific to a disease area or
360 to certain type of procedure and is more influenced by a strong coding variability between
361 healthcare providers and across years. Given this, we matched pairs of patients who
362 underwent either TAVI or SAVR inside the same hospital and over the same period. Hence,
363 we believe there is no a priori reason that miscoding would be more prominent in one cohort
364 than another and would alter their comparability. Another limitation relates to our inability to
365 capture deaths occurring outside hospital, which means that the mortality rates might be
366 slightly underestimated. However the rate of death occurring outside hospitals is today
367 extremely rare and probably negligible. There might also have been an underreporting of
368 adverse events as suggested by the low incidence of stroke, myocardial infarction, or
369 permanent pacemaker implantation observed in this study. Again, this issue is not specific to
370 certain procedure type and we assume that the relative occurrence of these events between
371 TAVI and SAVI was adequately estimated. Finally, the selected cohorts were treated during
372 Year 2010, that is seven years ago, and may therefore be less representative of contemporary

373 practices and outcomes related to TAVI in French centers since patients characteristics,
374 devices, and experience of centers have surely evolved in recent years. However, this choice
375 enabled to provide the longest ever reported follow-up of TAVI patients based on real-world
376 data.

377

378 **Practical implications**

379 The 2017 guidelines from the European Society of Cardiology (ESC)²⁷ have considered
380 TAVI in patients who are suitable for SAVR as assessed by the Heart Team but also an
381 alternative to surgery in people who are at increased surgical risk, the decision being made by
382 the heart team according to each patient characteristics. Accounting for the results of the
383 Partner 2 trial,⁵ the AHA/ACC recently updated guidelines have extended the indication of
384 TAVI to intermediate surgical risk depending on patient-specific procedural risks, values, and
385 preferences.²⁸ Based on these updated guidelines, the trend toward an enlarged use of TAVI
386 to lower surgical risk patients is likely to get amplified to a great extent. As previously
387 emphasized, the results from Partner 2 that suggest the non-inferiority of TAVI and SAVR in
388 intermediate-risk patients are only available at two years which is notably insufficient to
389 evaluate the long-term effectiveness of TAVI compared to SAVR for which the outcomes is
390 demonstrated beyond twenty years. Moreover, the results from Partner 2⁵, along with those of
391 Partner-high risk¹³, may be not representative of real-world clinical outcomes. Our results
392 showed an increased risk of mortality for TAVI compared to SAVR using a large nationwide
393 database providing real-word evidence over a long-term perspective. The implication of our
394 findings is that the extension of TAVI in patients other than those with high or prohibitive-
395 surgical risk should be cautious until further data, either based on RCTs or real-world
396 evidence, are made available to inform on the relative long-term effectiveness of TAVI
397 compared to SAVR.

398

399

400 **Conclusions**

401 Our study showed that patients after TAVI, compared to those who underwent SAVR, harbor
402 a greater risk of mortality and morbidity at 5 years, and had higher costs of hospitalizations.

403 These results indicate that more data are needed before considering an enlargement of TAVI

404 indications in people eligible to conventional surgery.

405

406 **References:**

- 407 **1.** Cribier A. Historical perspective: 10th year anniversary of TAVI. *EuroIntervention : journal of*
408 *EuroPCR in collaboration with the Working Group on Interventional Cardiology of the*
409 *European Society of Cardiology*. 2012;8 Suppl Q:Q15-17.
- 410 **2.** Newton JD, Redwood S, Prendergast BD. Transcatheter aortic valve implantation: a durable
411 treatment option in aortic stenosis? *Heart*. 2015;101:913-914.
- 412 **3.** Gilard M, Eltchaninoff H, Lung B, et al. Registry of transcatheter aortic-valve implantation in
413 high-risk patients. *The New England journal of medicine*. 2012;366:1705-1715.
- 414 **4.** Leon MB, Smith CR, Mack M, et al. Transcatheter aortic-valve implantation for aortic stenosis
415 in patients who cannot undergo surgery. *The New England journal of medicine*.
416 2010;363:1597-1607.
- 417 **5.** Leon MB, Smith CR, Mack MJ, et al. Transcatheter or Surgical Aortic-Valve Replacement in
418 Intermediate-Risk Patients. *The New England journal of medicine*. 2016;374:1609-1620.
- 419 **6.** Cribier A, Durand E, Eltchaninoff H. Patient selection for TAVI in 2014: is it justified to treat
420 low- or intermediate-risk patients? The cardiologist's view. *EuroIntervention : journal of*
421 *EuroPCR in collaboration with the Working Group on Interventional Cardiology of the*
422 *European Society of Cardiology*. 2014;10 Suppl U:U16-21.
- 423 **7.** Adams DH, Popma JJ, Reardon MJ, et al. Transcatheter aortic-valve replacement with a self-
424 expanding prosthesis. *The New England journal of medicine*. 2014;370:1790-1798.
- 425 **8.** Ando T, Takagi H. Comparison of late mortality after transcatheter aortic valve implantation
426 versus surgical aortic valve replacement: Insights from a meta-analysis. *European journal of*
427 *internal medicine*. 2017.
- 428 **9.** Schymik G, Heimeshoff M, Bramlage P, et al. A comparison of transcatheter aortic valve
429 implantation and surgical aortic valve replacement in 1,141 patients with severe
430 symptomatic aortic stenosis and less than high risk. *Catheterization and cardiovascular*
431 *interventions : official journal of the Society for Cardiac Angiography & Interventions*.
432 2015;86:738-744.
- 433 **10.** Piazza N, Kalesan B, van Mieghem N, et al. A 3-center comparison of 1-year mortality
434 outcomes between transcatheter aortic valve implantation and surgical aortic valve
435 replacement on the basis of propensity score matching among intermediate-risk surgical
436 patients. *JACC. Cardiovascular interventions*. 2013;6:443-451.
- 437 **11.** Quan H, Sundararajan V, Halfon P, et al. Coding algorithms for defining comorbidities in ICD-
438 9-CM and ICD-10 administrative data. *Medical care*. 2005;43:1130-1139.
- 439 **12.** Deeb GM, Reardon MJ, Chetcuti S, et al. 3-Year Outcomes in High-Risk Patients Who
440 Underwent Surgical or Transcatheter Aortic Valve Replacement. *Journal of the American*
441 *College of Cardiology*. 2016;67:2565-2574.
- 442 **13.** Mack MJ, Leon MB, Smith CR, et al. 5-year outcomes of transcatheter aortic valve
443 replacement or surgical aortic valve replacement for high surgical risk patients with aortic
444 stenosis (PARTNER 1): a randomised controlled trial. *Lancet (London, England)*.
445 2015;385:2477-2484.
- 446 **14.** Latib A, Maisano F, Bertoldi L, et al. Transcatheter vs surgical aortic valve replacement in
447 intermediate-surgical-risk patients with aortic stenosis: a propensity score-matched case-
448 control study. *American heart journal*. 2012;164:910-917.
- 449 **15.** Muneretto C, Bisleri G, Moggi A, et al. Treating the patients in the 'grey-zone' with aortic
450 valve disease: a comparison among conventional surgery, sutureless valves and transcatheter
451 aortic valve replacement. *Interactive cardiovascular and thoracic surgery*. 2015;20:90-95.
- 452 **16.** Johansson M, Nozohoor S, Bjursten H, et al. Late survival and heart failure after transcatheter
453 aortic valve implantation. *Asian cardiovascular & thoracic annals*. 2016;24:318-325.
- 454 **17.** Thyregod HG, Steinbruchel DA, Ihlemann N, et al. Transcatheter Versus Surgical Aortic Valve
455 Replacement in Patients With Severe Aortic Valve Stenosis: 1-Year Results From the All-

- 456 Comers NOTION Randomized Clinical Trial. *Journal of the American College of Cardiology*.
457 2015;65:2184-2194.
- 458 **18.** Sondergaard L, Steinbruchel DA, Ihlemann N, et al. Two-Year Outcomes in Patients With
459 Severe Aortic Valve Stenosis Randomized to Transcatheter Versus Surgical Aortic Valve
460 Replacement: The All-Comers Nordic Aortic Valve Intervention Randomized Clinical Trial.
461 *Circulation. Cardiovascular interventions*. 2016;9.
- 462 **19.** Reardon MJ, Van Mieghem NM, Popma JJ, et al. Surgical or Transcatheter Aortic-Valve
463 Replacement in Intermediate-Risk Patients. *The New England journal of medicine*.
464 2017;376:1321-1331.
- 465 **20.** Rosato S, Santini F, Barbanti M, et al. Transcatheter Aortic Valve Implantation Compared
466 With Surgical Aortic Valve Replacement in Low-Risk Patients. *Circulation. Cardiovascular
467 interventions*. 2016;9:e003326.
- 468 **21.** Thourani VH, Kodali S, Makkar RR, et al. Transcatheter aortic valve replacement versus
469 surgical valve replacement in intermediate-risk patients: a propensity score analysis. *Lancet
470 (London, England)*. 2016;387:2218-2225.
- 471 **22.** Barili F, Freemantle N, Folliguet T, et al. The flaws in the detail of an observational study on
472 transcatheter aortic valve implantation versus surgical aortic valve replacement in
473 intermediate-risk patients. *European Journal of Cardio-Thoracic surgery*.
- 474 **23.** Trochu JN, Le Tourneau T, Obadia JF, Caranhac G, Beresniak A. Economic burden of
475 functional and organic mitral valve regurgitation. *Archives of cardiovascular diseases*.
476 2015;108:88-96.
- 477 **24.** Maura G, Blotiere PO, Bouillon K, et al. Comparison of the short-term risk of bleeding and
478 arterial thromboembolic events in nonvalvular atrial fibrillation patients newly treated with
479 dabigatran or rivaroxaban versus vitamin K antagonists: a French nationwide propensity-
480 matched cohort study. *Circulation*. 2015;132:1252-1260.
- 481 **25.** Payet C, Lifante JC, Carty MJ, Rabilloud M, Duclos A. Methodological Quality of Surgical
482 Mortality Studies Using Large Hospital Databases: A Systematic Review. *Annals of surgery*.
483 2016.
- 484 **26.** Armoiry X, Obadia JF, Iung B, Polazzi S, Duclos A. Clinical outcomes and direct costs after
485 transcatheter aortic valve implantation in French centres: a longitudinal study of 1332
486 patients using a national database. *Interactive cardiovascular and thoracic surgery*.
487 2016;23:883-888.
- 488 **27.** Baumgartner H, Falk V, Bax J, et al. 2017 ESC/EACTS Guidelines for the management of
489 valvular heart disease. *Eur Heart J*. 2017:1-53.
- 490 **28.** Nishimura RA, Otto CM, Bonow RO, et al. 2017 AHA/ACC Focused Update of the 2014
491 AHA/ACC Guideline for the Management of Patients With Valvular Heart Disease: A Report of
492 the American College of Cardiology/American Heart Association Task Force on Clinical
493 Practice Guidelines. *Journal of the American College of Cardiology*. 2017.
- 494 **29.** Kodali SK, Williams MR, Smith CR, et al. Two-year outcomes after transcatheter or surgical
495 aortic-valve replacement. *The New England journal of medicine*. 2012;366:1686-1695.
- 496 **30.** Smith CR, Leon MB, Mack MJ, et al. Transcatheter versus surgical aortic-valve replacement in
497 high-risk patients. *The New England journal of medicine*. 2011;364:2187-2198.
- 498 **31.** Reardon MJ, Adams DH, Kleiman NS, et al. 2-Year Outcomes in Patients Undergoing Surgical
499 or Self-Expanding Transcatheter Aortic Valve Replacement. *Journal of the American College
500 of Cardiology*. 2015;66:113-121.

501

502

503 **Figure legend:**

504

505 **Figure 1: Mean Cumulative costs over time**

506 TAVI = transcatheter aortic valve implantation; SAVR = surgical aortic valve replacement.

507 Predictions from GEE Poisson regression model.

508

509 **Supplementary material**

510

511 **Supplementary material 1: Study flowchart**

512

513 **Supplementary material 2: Baseline characteristics of patients before and after**
514 **matching**

515

516 **Supplementary material 3: Cumulative probability of all-cause in-hospital mortality**

517

518 **Supplementary material 4: Mean cumulative costs per person**

519

520 **Supplementary material 5 – Propensity scores distribution before (left) and after (right)**
521 **matching**

522

523 **Supplementary material 6 – Cumulative incidence curves (cumulative probability of**
524 **events)**

525

526 **Supplementary material 7 - Sensitivity analysis (Matching with replacement)**

527

528 **Supplementary material 8 - Sensitivity analysis (Multilevel modelling for the outcomes)**

529

530

531

532

533

Table 1- Baseline characteristics of patients post-matching

	TAVI (n=799)	SAVR (n=799)	Standardized differences
Male sex	427 (53.4%)	434 (54.3%)	-0.018
Age, years	81 [76 – 85]	81 [77 – 85]	0.002
Income, euros	19659 [18285 – 21971]	19734 [18395 – 22073]	-0.060
Days of hospitalization in the previous year	11 [4 – 23]	10 [4 – 24]	-0.006
Emergency procedure	13 (1.6%)	13 (1.6%)	0.000
Congestive heart failure	284 (35.5%)	278 (34.8%)	0.016
Cardiac arrhythmias	420 (52.6%)	427 (53.4%)	-0.018
Pulmonary circulation disorders	63 (7.9%)	76 (9.5%)	-0.058
Peripheral vascular disease	90 (11.3%)	93 (11.6%)	-0.012
Hypertension	350 (43.8%)	338 (42.3%)	0.030
Chronic pulmonary disease	89 (11.1%)	88 (11.0%)	0.004
Diabetes	155 (19.4%)	176 (22.0%)	-0.065
Renal disease	122 (15.3%)	119 (14.9%)	0.010
Liver disease	23 (2.9%)	21 (2.6%)	0.015
Obesity	71 (8.9%)	62 (7.8%)	0.041
Myocardial infarction	52 (6.5%)	44 (5.5%)	0.042
Cerebrovascular disease	69 (8.6%)	79 (9.9%)	-0.043

Values are number (%) or median [interquartile range].

TAVI = transcatheter aortic valve implantation; SAVR = surgical aortic valve replacement.

Table 2- Compared clinical outcomes between TAVI and SAVR cohorts

Time t	TAVI (n=799)		SAVR (n=799)		HR ^b [CI 95%]	p-value ^b
	N events	% [95% CI] ^a	N events	% [95% CI] ^a		
All-cause death						
At 1 year	127	16.8 [14.3 – 19.6]	97	12.8 [10.6 – 15.4]	1.33 [1.02 – 1.72]	0.033
At 2 years	177	24.2 [21.2 – 27.5]	124	16.8 [14.3 – 19.7]	1.47 [1.17 – 1.84]	0.001
At 3 years	235	33.7 [30.3 – 37.4]	163	23.1 [20.1 – 26.4]	1.52 [1.25 – 1.85]	<0.001
At 4 years	286	42.8 [39.0 – 46.7]	196	29.0 [25.6 – 32.6]	1.58 [1.32 – 1.89]	<0.001
At 5 years	332	52.4 [48.4 – 56.5]	236	37.3 [33.5 – 41.4]	1.56 [1.33 – 1.84]	<0.001
Postoperative stay in ICU/CCU						
At 1 year	296	37.0 [33.7 – 40.4]	537	67.2 [63.8 – 70.3]	0.48 [0.43 – 0.55]	<0.001
At 2 years	313	39.2 [35.8 – 42.5]	540	67.6 [64.2 – 70.7]	0.50 [0.45 – 0.57]	<0.001
At 3 years	326	40.8 [37.4 – 44.2]	548	68.6 [65.2 – 71.7]	0.51 [0.46 – 0.57]	<0.001
At 4 years	334	41.8 [38.4 – 45.2]	550	68.8 [65.5 – 71.9]	0.52 [0.46 – 0.58]	<0.001
At 5 years	340	42.6 [39.1 – 45.9]	556	69.6 [66.3 – 72.6]	0.52 [0.46 – 0.58]	<0.001
Reoperation						
At 1 year	15	1.9 [1.1 – 3.0]	7	0.9 [0.4 – 1.7]	2.15 [0.87 – 5.30]	0.097
At 2 years	16	2.0 [1.2 – 3.2]	7	0.9 [0.4 – 1.7]	2.29 [0.94 – 5.60]	0.069
At 3 years	16	2.0 [1.2 – 3.2]	8	1.0 [0.5 – 1.9]	2.01 [0.85 – 4.71]	0.110
At 4 years	17	2.1 [1.3 – 3.3]	9	1.1 [0.6 – 2.1]	1.90 [0.84 – 4.28]	0.123
At 5 years	18	2.3 [1.4 – 3.5]	9	1.1 [0.6 – 2.1]	2.01 [0.90 – 4.50]	0.090
Stroke						
At 1 year	19	2.4 [1.5 – 3.6]	7	0.9 [0.4 – 1.7]	2.73 [1.14 – 6.53]	0.024
At 2 years	26	3.3 [2.2 – 4.7]	16	2.0 [1.2 – 3.2]	1.64 [0.87 – 3.08]	0.124
At 3 years	40	5.0 [3.6 – 6.7]	23	2.9 [1.9 – 4.2]	1.76 [1.05 – 2.94]	0.031
At 4 years	47	5.9 [4.4 – 7.7]	27	3.4 [2.3 – 4.8]	1.76 [1.10 – 2.84]	0.020
At 5 years	55	6.9 [5.3 – 8.8]	34	4.3 [3.0 – 5.8]	1.64 [1.07 – 2.54]	0.025
Myocardial infarction						
At 1 year	5	0.6 [0.2 – 1.4]	1	0.1 [0.0 – 0.7]	5.01 [0.58 – 42.94]	0.142
At 2 years	13	1.6 [0.9 – 2.7]	4	0.5 [0.2 – 1.2]	3.27 [1.06 – 10.06]	0.039
At 3 years	17	2.1 [1.3 – 3.3]	6	0.8 [0.3 – 1.6]	2.86 [1.12 – 7.27]	0.028
At 4 years	19	2.4 [1.5 – 3.6]	8	1.0 [0.5 – 1.9]	2.39 [1.04 – 5.50]	0.039
At 5 years	25	3.1 [2.1 – 4.5]	11	1.4 [0.7 – 2.4]	2.30 [1.12 – 4.69]	0.023
Pacemaker						
At 1 year	116	14.5 [12.2 – 17.1]	39	4.9 [3.5 – 6.5]	3.19 [2.23 – 4.56]	<0.001

At 2 years	125	15.6 [13.2 – 18.3]	48	6.0 [4.5 – 7.8]	2.80 [2.01 – 3.91]	<0.001
At 3 years	137	17.1 [14.6 – 19.8]	60	7.5 [5.8 – 9.5]	2.47 [1.82 – 3.35]	<0.001
At 4 years	156	19.5 [16.9 – 22.3]	70	8.8 [6.9 – 10.9]	2.42 [1.82 – 3.22]	<0.001
At 5 years	163	20.4 [17.7 – 23.3]	74	9.3 [7.4 – 11.4]	2.40 [1.81 – 3.17]	<0.001

TAVI = transcatheter aortic valve implantation; SAVR = surgical aortic valve replacement

a Cumulative probability of event [95% CI] at time t from the nonparametric (1 - Kaplan-Meier) estimator for all-cause death; and from the nonparametric Cumulative Incidence Functions estimator using competing risk of death for the other outcomes.

b Hazard Ratios (instantaneous rate of event for TAVI relative to SAVR at any time t) [95% CI] and p-value, estimated between time 0 and time t, from Cox proportional hazards model for all-cause death; and from Fine and Gray's competing risk model for the other outcomes. Matched-pairs design was taken into account with robust variance estimator.

Table 3- Compared health care utilization outcomes between TAVI and SAVR cohorts

Time t	TAVI (n=799)			SAVR (n=799)			Rate Ratio [95% CI] ^a	p-value ^a
	Total number of health care utilization	Total follow-up (PY)	Mean cumulative number per person ^a	Total number of health care utilization	Total follow-up (PY)	Mean cumulative number per person ^a		
Number of hospitalization stays								
At 1 year	3184	703.61	4.51	3719	724.11	5.10	0.88 [0.72 – 1.09]	0.255
At 2 years	4374	1349.18	6.46	5478	1411.32	7.71	0.84 [0.64 – 1.10]	0.200
At 3 years	5526	1946.03	8.50	7222	2069.87	10.42	0.82 [0.60 – 1.11]	0.192
At 4 years	6843	2480.04	11.02	8641	2689.18	12.81	0.86 [0.61 – 1.20]	0.381
At 5 years	7769	2969.54	13.07	10097	3272.01	15.39	0.85 [0.60 – 1.21]	0.368
Number of days of hospitalization								
At 1 year	35809	703.61	50.04	43040	724.11	58.16	0.86 [0.79 – 0.94]	0.001
At 2 years	45028	1349.18	65.05	51836	1411.32	71.20	0.91 [0.83 – 1.01]	0.071
At 3 years	53527	1946.03	80.36	61474	2069.87	86.17	0.93 [0.84 – 1.03]	0.177
At 4 years	61887	2480.04	97.23	70014	2689.18	100.72	0.97 [0.87 – 1.07]	0.514
At 5 years	68434	2969.54	112.02	79378	3272.01	116.93	0.96 [0.86 – 1.07]	0.432
Costs								
At 1 year	30774212	703.61	42238	26604033	724.11	35128	1.20 [1.13 – 1.28]	<0.001
At 2 years	35123650	1349.18	49330	30183988	1411.32	39917	1.24 [1.15 – 1.33]	<0.001
At 3 years	39051054	1946.03	56102	34014554	2069.87	45031	1.25 [1.15 – 1.35]	<0.001
At 4 years	42295035	2480.04	62992	37295324	2689.18	50107	1.26 [1.15 – 1.37]	<0.001
At 5 years	44889719	2969.54	69083	40860170	3272.01	55687	1.24 [1.13 – 1.36]	<0.001

TAVI = transcatheter aortic valve implantation; SAVR = surgical aortic valve replacement; PY=Person-year.^aFrom GEE Poisson regression model.

Table 4- Summary of studies identified in our literature search

Author/study name	Inclusion period	Country	Centers	Sample size	Method of comparison	STS (%)	Logistic Euroscore I (%)	All cause death									
								1 year		2 years		3 years		4 years		5 years	
								TAVI	SAVR	TAVI	SAVR	TAVI	SAVR	TAVI	SAVR	TAVI	SAVR
High-risk patients																	
Partner 1 ^{13,29,30}	2007-2009	>USA	25	348/351	RCT	11.8/11.7	29.3/29.2	24.2% p=0.44	26.8% p=0.44	33.9% p=0.78	35.0% p=0.78	/	/	67.8% p=0.76	62.4% p=0.76		
US Corevalve ^{7,12,31}	2011-2012	USA	45	391/359		7.3/7.5	17.6/18.4	14.2% p=0.04	19.1% p=0.04	22.2% p=0.04	28.6% p=0.04	32.9% p=0.068	39.1% p=0.068	/	/		
Latib et al. ¹⁴	2003-2008 + 2007-2011	Italy	1	111/111	PSM	4.6/4.6	23.2/24.4	6.4% p=0.80	8.1% p=0.80	/	/	/	/	/	/		
Piazza et al. ¹⁰	2006-2010	3 in EU	3	405/405		/	17.1/17.5	17.5% ** p=0.93	16.5% * p=0.93	/	/	/	/	/	/		
Johansson et al. ¹⁶	1999-2014	Sweden	1	166/125		/	23/20	19.5% p=0.001	10.4% p=0.001	/	/	/	48.2% p=0.001	27% p=0.001	/	/	
Muneretto et al. ¹⁵	2007-2014	EU	7	204/204		8.2/8.4	19.5/19.2	9.9% p<0.001	3.3% p<0.001	20.5% p<0.001	8.7% p<0.001	/	/	/	/		
Our study	2010	France	27 (nationwide)	832/832		/	/	15.7% p=0.326	13.8% p=0.326	22.8% p=0.021	17.4% p=0.021	32.5% p<0.001	22.3% p<0.001	42.0% p<0.001	29.5% p<0.001	51.5% p<0.001	36.2% p<0.001

Intermediate-risk patients												
Notion ^{17 18}	2009-2013	Denmark	3	145/135	RCT	2.9/3.1	8.4/8.9	4.9% 7.5%	8.0% 9.8%	/	/	/
Partner 2 ⁵	2011-2013	USA	57	1011/1021		5.8/5.8	/	12.3% 12.9%	16.7% 18.0%	/	/	/
Surtavi ¹⁹	2012-2016	USA, Europe, Canada	87	879/867		4.4/4.5	11.9/11.6	6.7% 6.8%	12.6% 14.0%	/	/	/
Schymik et al. ⁹	2007-2012	Germany	1	216/216	PSM	/	8.7/8.8	11.6% 7.4%	17.1% 9.7%	19.9% 14.3%	/	/
Rosato et al. ²⁰	2010-2012	Italy	93 (nationwide)	355/355		/	6.3/6.3	11.4% 7.8%	19.6% 12.8%	28.0% 16.6%	/	/
Thourani et al. ²¹	2011- 2013 + 2014	USA, Canada	51 + 57	1077/944	PSS	5.2/5.4	/	7.4% 13.0%	/	/	/	/

TAVI = transcatheter aortic valve implantation; SAVR = surgical aortic valve replacement; RCT = randomized controlled trial; PSM = Propensity-Score Matching; PSS =

Propensity-Score Stratification. * calculated over the 3 year period ** estimated from the number of deaths stated in the manuscript (71 in TAVI, 67 in SAVR)