

Figure 1 Participant flow diagram: as per CONSORT guidelines.

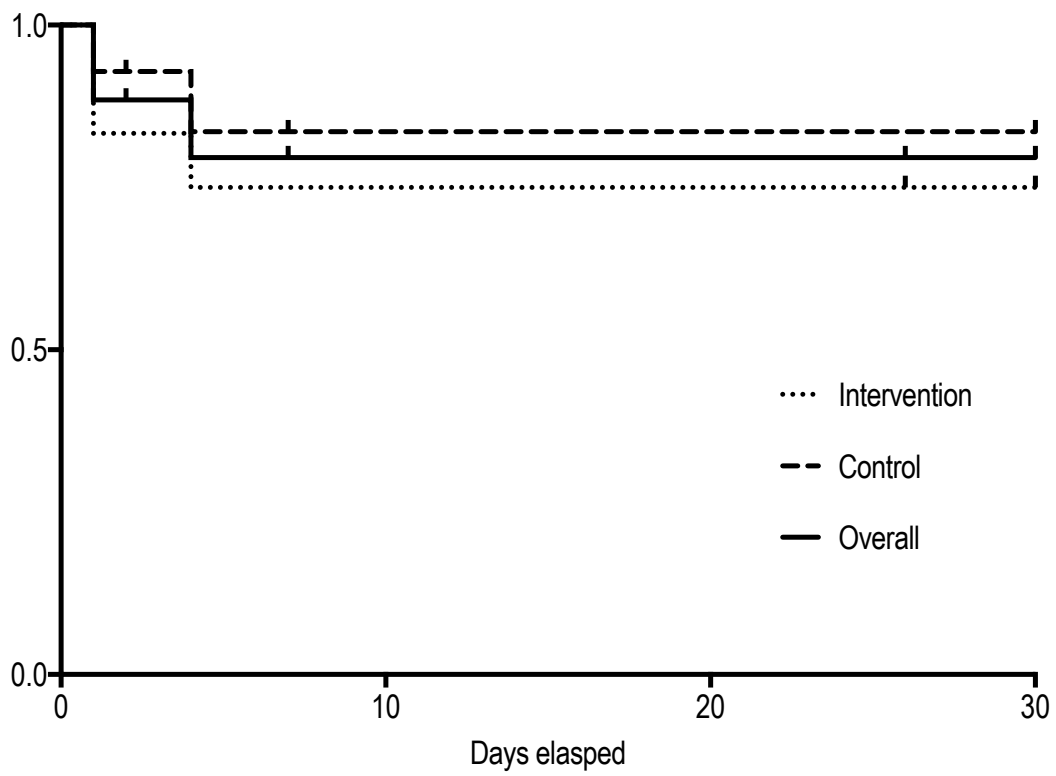


Figure 2 Survival curves for the whole cohort of 40 patients. Event rate was calculated by Kaplan-Meier method; survivor function (solid line) and survival rates according to randomization arm: Intervention (dotted line), Control (broken line) Event rates were calculated by the Kaplan-Meier method, HR 1.7 (95% CI 0.3 to 10.5) and compared with the use of the Log-rank test P = 0.6.

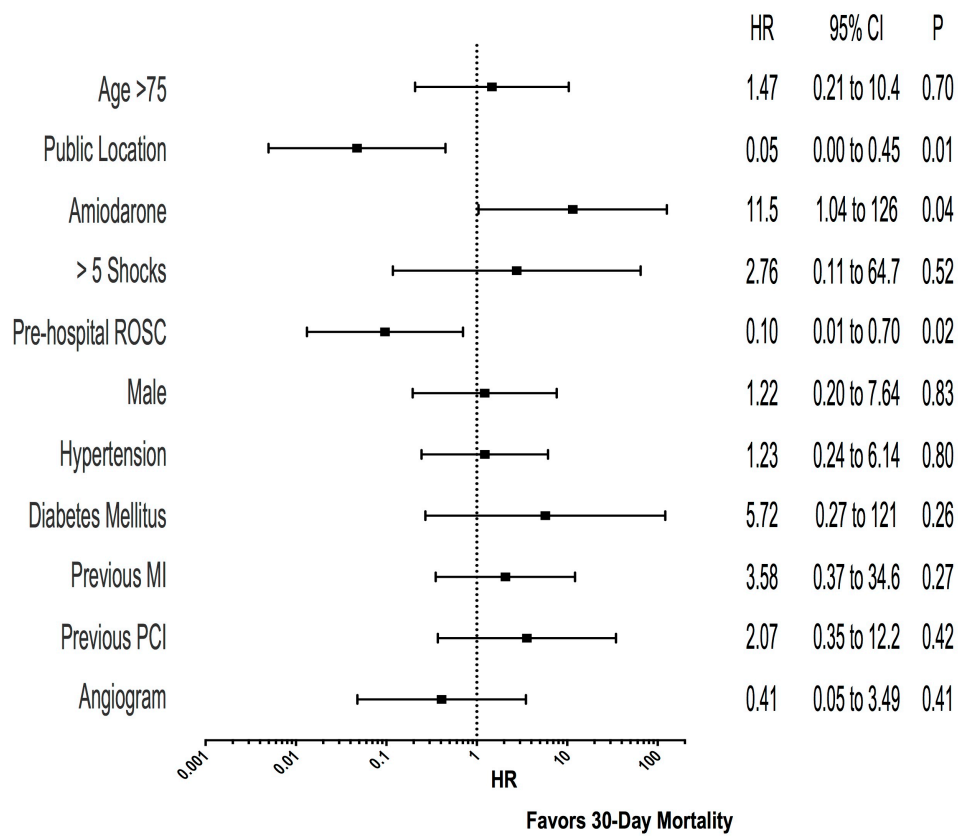


Figure 3. Cox proportional hazards model, presented as a forest plot, for predictors for 30-mortality; abbreviations: ROSC return of spontaneous circulation, MI myocardial infarction, PCI percutaneous coronary intervention.