

**Original citation:**

Pereira, H. Jessica, Hutter, Oliver S., Dabera, G. Dinesha M. R., Rochford, Luke A. and Hatton, Ross A.. (2017) Copper light-catching electrodes for organic photovoltaics. Sustainable Energy Fuels. doi: 10.1039/C7SE00077D

**Permanent WRAP URL:**

<http://wrap.warwick.ac.uk/88072>

**Copyright and reuse:**

The Warwick Research Archive Portal (WRAP) makes this work of researchers of the University of Warwick available open access under the following conditions. Copyright © and all moral rights to the version of the paper presented here belong to the individual author(s) and/or other copyright owners. To the extent reasonable and practicable the material made available in WRAP has been checked for eligibility before being made available.

Copies of full items can be used for personal research or study, educational, or not-for-profit purposes without prior permission or charge. Provided that the authors, title and full bibliographic details are credited, a hyperlink and/or URL is given for the original metadata page and the content is not changed in any way.

**Publisher statement:**

First published by Royal Society of Chemistry 2017

<http://dx.doi.org/10.1039/C7SE00077D>

**A note on versions:**

The version presented here may differ from the published version or, version of record, if you wish to cite this item you are advised to consult the publisher's version. Please see the 'permanent WRAP url' above for details on accessing the published version and note that access may require a subscription.

For more information, please contact the WRAP Team at: [wrap@warwick.ac.uk](mailto:wrap@warwick.ac.uk)

## Copper light-catching electrodes for organic photovoltaics

H. Jessica Pereira<sup>1</sup>, Oliver S. Hutter<sup>1,2</sup>, G. Dinesha M. R. Dabera<sup>1</sup>, Luke Rochford<sup>1,3</sup> and Ross. A. Hatton<sup>1\*</sup>

<sup>1</sup>Department of Chemistry, University of Warwick, CV4 7AL, United Kingdom

<sup>2</sup>Current Address: Stephenson Institute for Renewable Energy, University of Liverpool, L69 7ZF, United Kingdom

<sup>3</sup>Current Address: Department of Chemistry, University of Birmingham, B15 2TT, United Kingdom

\*Corresponding author: [Ross.Hatton@warwick.ac.uk](mailto:Ross.Hatton@warwick.ac.uk)

### Abstract

Optically thin copper films with a random array of sub-optical wavelength apertures couple strongly with light in the wavelength range 600-800 nm due to excitation of surface plasmonic resonances. Herein we show that this trapped light can be used to excite electronic transitions in a nearby strongly absorbing organic semiconductor before the plasmonic excitations dissipate their energy as heat into the metal. This energy transfer process is demonstrated using model small molecule and polymer photovoltaic devices (based on chloro-aluminium phthalocyanine : C<sub>60</sub> and PCE-10 : PC<sub>70</sub>BM heterojunctions respectively) in conjunction with a nano-hole copper electrode formed by thermal annealing an optically thin Cu film supported on polyethylene terephthalate. The efficiency of this process is shown to be highest for wavelengths in the range 650-750 nm, which is part of the solar spectrum that is weakly absorbed by today's high performance organic photovoltaic devices, and so these findings demonstrate that this type of electrode could prove useful as a low cost light catching element in high performance organic photovoltaics.

### Introduction

Organic photovoltaic (OPV) devices convert sunlight directly into electricity using thin films (70-200 nm) of strongly absorbing organic semiconductors as the photoactive material, and offer the possibility of very low cost fabrication onto flexible substrates, combined with short energy payback times.<sup>1,2</sup> The compatibility with light-weight, flexible substrates opens the door to applications in building integration<sup>2</sup>, transportation<sup>3</sup> and wearable/smart electronics<sup>4,7</sup> not accessible to conventional rigid flat plate photovoltaics. However, the low charge carrier mobility in organic semiconductors<sup>4,5</sup> limits the thickness of the light harvesting layer to below that needed to absorb all useful photons from the incident solar spectrum, which in turn limits the power conversion efficiency ( $\eta$ ).<sup>6,7</sup> Over the past 8 years several ways to circumvent this constraint have been proposed based on using of Au and Ag nanoparticles to increase the photon-to-electron conversion efficiency by increasing light absorption in the photoactive layer.<sup>8</sup> Noble metal nanoparticles couple strongly with visible light as a result of excitation of localised surface plasmon resonances (LSPRs),<sup>9</sup> which are collective oscillations of the conduction band electrons confined

to the interface between the metal and the surrounding dielectric medium, that occur when the particle dimensions are much smaller than the wavelength of the incident light.<sup>7</sup> The very large absorption cross-section of noble metal nanoparticles<sup>10</sup> combined with the possibility of engineering the nanoparticle size and geometry to tune the LSPR frequency, offers the possibility for them to be used in OPVs to enhance light absorption across a broad range of wavelengths via two different mechanisms: (i) by efficient scattering of the incident light into the far-field, thereby increasing the path length through the photo-active layer<sup>11</sup>; and/or (ii) by confining and concentrating the incident light as an intense near-field evanescent wave at the nanoparticle-dielectric interface (i.e. LSPR excitations),<sup>7,12</sup> where the near-field enhancement decays exponentially into the surrounding dielectric over a range of several tens of nanometres.<sup>12</sup> The latter approach requires that the light harvesting organic semiconductor is as close to the nanoparticle as possible, although not so close that the competing process of exciton quenching becomes significant.<sup>12,13</sup> In practice the optimal separation is of the order of 3-5 nm.<sup>12,13</sup> Due to the very large absorption coefficient in organic semiconductors used to harvest light in OPVs it is possible that this trapped light can be harnessed directly to excite electron transitions from highest occupied molecular orbital (HOMO) to lowest unoccupied molecular orbital (LUMO) in the adjacent organic semiconductor, before the surface plasmonic excitations dissipate their energy as heat due to ohmic losses in the metal.<sup>14</sup> Unfortunately the dimensions of Au and Ag nanoparticles needed for efficient scattering and concentration of light is of the order of several tens of nanometres<sup>11</sup> and so integration into OPV device architectures over large areas presents a significant challenge for scale-up.<sup>8</sup>

An alternative scalable approach that has received relatively little attention to date, but is well matched to OPV device architectures, is to trap the incident light<sup>6</sup> as surface plasmonic excitations at the surface of a noble metal electrode having a random array of sub-optical wavelength apertures.<sup>7</sup> Similar to metal nanoparticles, nano-holes in a noble metal film have a large absorption cross-section enabling strong coupling with plane wave incident light,<sup>15</sup> whilst having the advantage of being confined to the plane of the electrode. Consequently, unlike metal nanoparticles, nano-apertures in a metal film electrode do not risk compromising the shunt resistance of a device with a very thin light harvesting layer, such as in an OPV. Also, unlike metal nanoparticles, metal nano-hole electrodes can support both propagating and localised plasmonic-excitations, which are strongly coupled.<sup>6,15,16</sup> This approach to light trapping in OPVs was first proposed by Reilly *et al.* who used a 30 nm thick Ag electrode with a random distribution of circular apertures of the same radius formed by micro-sphere lithography.<sup>17</sup> Stec *et al.*<sup>18</sup> advanced that work in three important ways: (i) by developing a scalable method for the formation of a dense array of random apertures over large areas based on annealing optically thin (~ 10 nm) Ag films; (ii) by demonstrating that Au could be used in place of Ag; and (iii) by showing that OPV devices using random aperture nano-hole electrodes could actually outperform conventional ITO glass window electrodes in OPVs. Importantly the apertures formed by thermal annealing have a broad distribution of shapes and sizes which ensures a broad-band plasmonic response, which is well-matched to OPV applications.<sup>15</sup>

However, whilst Ag and Au are the preferred metals for this application, because of their high conductivity and relatively low optical losses,<sup>14</sup> the use of such high cost metals in OPVs inevitably erodes the cost advantage of OPVs over other types of thin film photovoltaics, and so there is a need to identify lower cost alternatives to these metals. Cu is attractive as an alternative to Ag owing to its abundance, high electrical conductivity and because it is  $\sim 100^{\text{th}}$  of the cost of Ag<sup>19</sup>. The optical losses in Cu due to intra-band transitions and free electron (Drude) losses are comparable to that of Au so it can support intense surface plasmon resonances in the visible region<sup>20,21</sup>, although Cu has not received much attention as a plasmon-active material for photovoltaics due to its susceptibility to oxidation in air, which results in the formation of a surface oxide that damps surface plasmonic excitations.<sup>20,21</sup> However, in recent years there has been considerable progress in the development of ultra-thin surface passivation layers for Cu which offer a means of addressing this problem,<sup>22,23</sup> and so nano-structured Cu may yet prove useful for light trapping and concentration in OPVs. Herein we demonstrate for the first time a *proof-of-principle* that Cu electrodes with a random array of sub-optical wavelength apertures can be used to catch incident light and efficiently transfer that energy to an adjacent organic semiconductor in a model OPV device. Based on these findings we propose the optimal location for such an electrode to maximise its potential benefit in an OPV.

## Experimental

*Substrate cleaning:* Substrate slides of the required dimension (13×13 mm for OPV devices and 26 × 26 mm for electrode characterisation) were cut from a roll of PET (Mitsubishi, Hostaphan GN 125 4600A) and cleaned by rinsing consecutively in deionized water, 2-propanol (IPA) and acetone. The slides were then dried using a stream of nitrogen.

All electrode and device fabrication was carried out in a nitrogen filled glove box with a O<sub>2</sub> level < 1 ppm unless otherwise stated. Evaporation of metals and metal oxides was carried out with a CreaPhys Organic Molecular evaporator co-located in the same glove box. The thickness of deposited layers was monitored using a carefully calibrated quartz-crystal microbalance mounted adjacent to the substrate. All metals were thermally evaporated from tungsten boats. MoO<sub>3</sub> was thermally evaporated using boron nitride crucibles. Chloro-aluminium phthalocyanine (ClAlPc) and C<sub>60</sub> were thermally evaporated from boron nitride crucibles. The working pressure of the evaporator was <  $1 \times 10^{-5}$  mbar.

*Deposition of copper:* Cu was deposited by thermal evaporation of Cu pellets at a rate of 2.2 – 2.5 Å s<sup>-1</sup> to give a thickness of 11 nm. Notably both sides of the PET sheet were not identical in surface roughness and so AFM imaging was performed in tapping mode using an Asylum Research MFP – 3D to determine the smooth side onto which Cu was deposited.

*Fabrication of apertures:* Cu films were annealed in a tube furnace at 175 °C under a pressure  $\leq 5 \times 10^{-4}$  mbar for 10 minutes. Scanning electron microscopy (SEM) imaging was performed using ZEISS Supra SP55 with an accelerating voltage of typically 5-7 kV to evaluate the distribution and coverage of apertures.

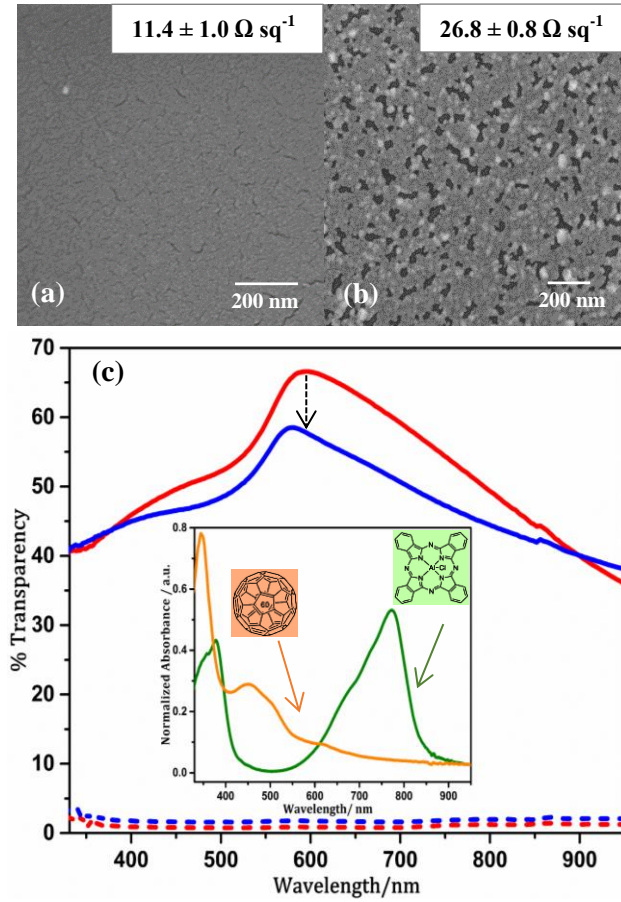
*Optical Transparency measurement:* Far-field transmittance of metal films on PET was measured over the wavelength range 300 – 900 nm using 150 mm Spectralon® Integrating Sphere coupled to PerkinElmer® LAMBDA™ high performance series of UV/Vis spectrometer. The incident beam passed through the plastic substrate first.

*Fabrication of OPV devices:* ClAlPc was purified by thermal gradient sublimation prior to deposition. All other chemicals were used without further purification. MoO<sub>3</sub> (5 nm at 0.3-0.5 Å s<sup>-1</sup>) was deposited on annealed copper thin films using thermal evaporation. For fabrication of devices with bilayer architecture ClAlPc (20 nm) and C<sub>60</sub> (40 nm) were deposited by thermal evaporation at a rate of 0.9 – 1.2 Å s<sup>-1</sup> and 0.3 – 0.4 Å s<sup>-1</sup> respectively. For devices with bulk-heterojunction architecture, PCE10 (Poly[4,8-bis(5-(2-ethylhexyl)thiophen-2-yl)benzo[1,2-b;4,5-b']dithiophene-2,6-diyl-alt-(4-(2-ethylhexyl)-3-fluorothieno[3,4-b]thiophene-)-2-carboxylate-2,6-diyl)]) and PC<sub>70</sub>BM ([6,6]-Phenyl-C71-butyric acid methyl ester) were mixed in 2:3 mass ratio to make a 35 mg ml<sup>-1</sup> solution in chlorobenzene (97%) and 1,8-diiodooctane (3%) and deposited by spin coating from a static start at 4000 rpm for 120 seconds, followed by a methanol treatment at 4000 rpm for 30 seconds. These slides were then allowed to dry under vacuum overnight. Bathocuproine (BCP) (5 nm at 0.3-0.5 Å s<sup>-1</sup>) and Al (80 nm at 1.0-1.3 Å s<sup>-1</sup>) were deposited by thermal evaporation. Al was deposited through a shadow mask to give an electrode area of 0.06 cm<sup>2</sup>.

*Characterization of OPV devices:* Current density-voltage (*JV*) testing was performed in the dark and under 1 sun simulated solar illumination using a Keithley 2400 source meter and a custom Labview interface using an ABET technologies Sun 2000 Solar Simulator. The intensity was set to 100 mW cm<sup>-2</sup> over the AM1.5 solar spectrum. The light source was calibrated using a calibrated silicon diode. EQE measurements were done using a white light xenon arc lamp (Sciencetech SF150), monochromator (Photon Technology International), focussing and splitting lenses, current-voltage amplifier (Femto DHPCA-100), lock-in amplifier (Stanford Research SR830 DSP) and a custom Labview interface.

## Results and Discussion

Cu films with a thickness of 11 nm were deposited onto the transparent plastic substrate polyethylene terephthalate (PET) by thermal evaporation, forming uniform films with a sheet resistance of  $\sim 11 \Omega \text{ sq}^{-1}$  (Figure 1(a)). Thermal annealing of these films under high vacuum results in the formation of a random array of irregularly shaped sub-optical wavelength apertures, the number density and size being determined by the annealing time and temperature (Figure 1 (b)). The glass transition temperature and melting point of PET are 67-81°C and  $\sim 220^\circ\text{C}$  respectively<sup>24</sup> and so annealing increases the crystallinity of the PET substrate, as is evident from the X-ray diffraction data in Figure S2. However, this change in crystallinity does not change the far-field transparency; Figure S3, and so the change in the optical properties of the Cu electrode upon annealing result from a change in the Cu film morphology. The optimal annealing conditions were determined by observing aperture formation as a function of annealing temperature using a heated stage mounted inside a scanning electron microscope (SEM) (Supplementary Information Figure S1). When the electrodes were heated in vacuum ( $5 \times 10^{-4}$  mbar) at  $175^\circ\text{C}$  for 10 minutes, a dense random array of apertures with dimensions in the size range 50-100 nm and area coverage of  $\sim 10\%$  were formed. Thermal annealing was accompanied by an increase in sheet resistance of the films to  $\sim 27 \Omega \text{ sq}^{-1}$  which can be attributed to the combined effects of the inclusion of apertures and increase in film surface roughness, both of which increase the scattering of electrons as they move in the plane of the metal film under the influence of the applied bias. Importantly, this increase in sheet resistance is not sufficient to significantly change the series resistance of the OPV devices fabricated as part of this study because the devices have a small area of  $0.06 \text{ cm}^2$ .

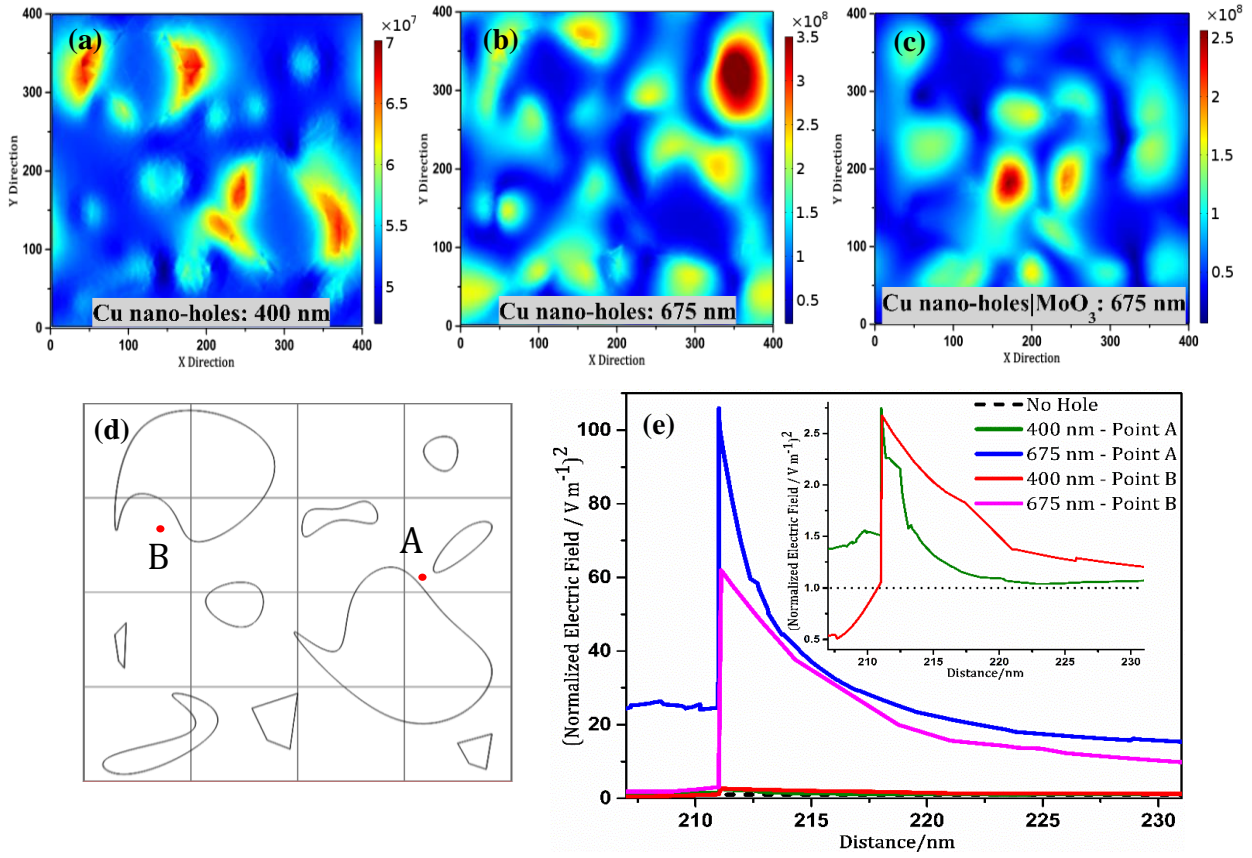


**Figure 1:** SEM showing the morphology of Cu films (11 nm) before (a) and after (b) annealing at 175°C for 10 min at  $5 \times 10^{-4}$  mbar; (c) Optical transparency (solid lines) and far-field scattering (dashed lines) measurements of 11 nm Cu films with (blue) and without (red) nano-apertures **Inset:** Absorption spectra of ClAlPc (20 nm) and C<sub>60</sub> (40 nm) films - the same thickness used in the model OPV devices fabricated as part of this study.

The incorporation of apertures into the Cu film results in a large reduction in the far-field transparency across a broad wavelength range between 450-850 nm, with the largest absolute reduction of 10% for wavelengths in the range 590-700 nm. Light scattering measurements performed using an integrating sphere (Figure 1(c)) confirmed that this reduction in transparency is not the result of far-field light scattering, which is consistent with the small size of the apertures compared to the wavelength of the incident light. Since the largest reduction in transparency occurs for wavelengths in the range 590-700 nm and peaks at ~625 nm, the reduction in transparency for wavelength > 600 nm can be attributed (primarily) to light absorption arising from excitation of surface plasmon resonances in the Cu film, since this wavelength range coincides with that over which Cu can support surface plasmon resonance excitations and the optical losses due to inter-band transitions and free electron losses are at their lowest.<sup>14</sup> Finite-element modelling of the near-field intensity in Cu films with and without apertures of the size and

shapes formed by annealing Cu films corroborate the conclusion that light is trapped at the surface as a near-field evanescent wave (Figure 2). The simulations also show that the intensity distribution across the electrode surface is highly heterogeneous, consistent with the complex interaction between plasmonic excitations associated with different features on the electrode surface. In principle these regions of intense near-field radiation can be used to excite electronic transitions from the HOMO to the LUMO in the organic semiconductor before the surface plasmons dissipate their energy as heat due to ohmic losses in the metal.<sup>25</sup> To explore this possibility, model OPVs based on a bilayer heterojunction of the small molecule donor ClAlPc and acceptor C<sub>60</sub> (Figure 1(c) - inset) were fabricated using Cu electrodes with and without a random array of apertures shown in Figures 1(a) & (b). This simple device architecture and the thickness of the organic semiconductor layers were specifically selected as a model structure to test the aforementioned hypothesis: ClAlPc was used because its intense Q-band<sup>26,27</sup> is located between 600 – 850 nm (Figure 1 (c) - inset) which coincides with the range over which surface plasmon resonant excitations are most intense in the Cu nano-hole electrode. MoO<sub>3</sub> was used as the hole-extraction layer because it is well-known to facilitate efficient extraction of holes from most donor type organic semiconductors for thicknesses in the range 3-20 nm and its thickness can be accurately controlled by thermal evaporation.<sup>28,29,30</sup> The results of the finite-element modelling given (Figure 2(c) and (e)) show that a 5 nm thick MoO<sub>3</sub> layer is sufficiently thin for there to be significant spatial overlap between the ClAlPc layer and the near-field evanescent wave extending from the electrode surface, since the range of the trapped light extends to several tens of nanometres from the electrode surface.

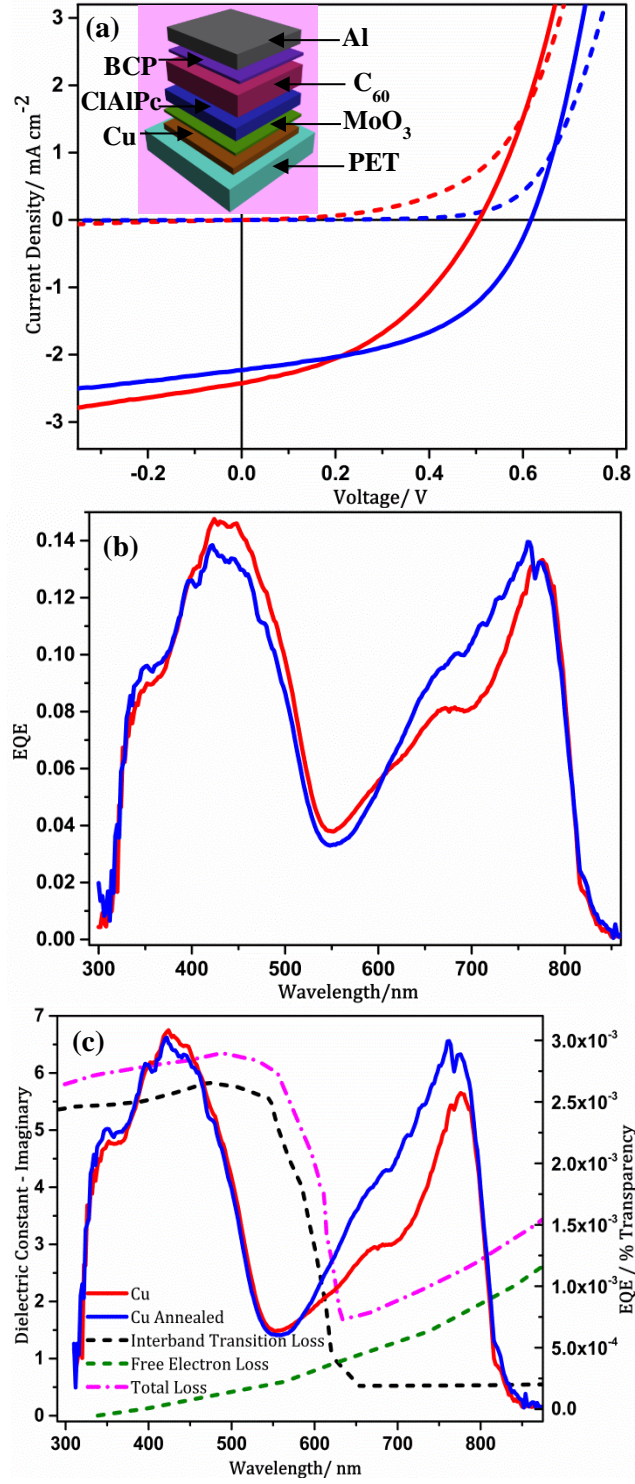




**Figure 2:** Finite-element modelling of the near field 15 nm above the surface of an 11 nm thick Cu nano-hole electrode supported on PET, with a random arrangement of different shaped apertures (representative of that achieved experimentally) (d).; Optical field for  $\lambda = 400$  nm (a) and  $\lambda = 675$  nm (b) plane wave incident light.; (c) Optical field 15 nm above the metal electrode for plane wave incident light of  $\lambda = 675$  nm, simulated for a PET (200 nm) / Cu (11 nm) / MoO<sub>3</sub> (5 nm) / ClAlPc (20 nm) ; (e) Normalized field strength as a function of distance from the surface of the Cu nano-hole electrodes at points A and B (indicated in (d)) for plane wave incident for PET (200 nm) / Cu (11 nm).

The device current-voltage characteristics in the dark and under 1 sun illumination are shown in Figure 3(a) and Table 1. It is evident that the short-circuit current density ( $J_{sc}$ ) is comparable for devices using Cu electrodes with and without nano-holes, despite the lower far-field transparency of the Cu nano-hole electrode, particularly over the wavelength range between 600 – 800 nm which coincides with that over which ClAlPc most strongly absorbs (Fig.1 (c) inset). This finding is consistent with the hypothesis that the light trapped as surface plasmonic excitations in the Cu nano-hole electrode (which results in the reduced transparency for  $\lambda > 575$  nm in the nano-hole electrode) is to a large extent coupled into the adjacent ClAlPc layer, since in the bilayer device architecture the ClAlPc is the only layer within range of the evanescent wave extending from the surface of the nano-hole electrode (Figure 2(c) & (e)). This conclusion is corroborated by the difference in the shape of the external quantum efficiency (EQE) spectra (Figure 3(b)) from which it is evident that photons are converted to electrons in the external

circuit more efficiently for devices using the nano-hole electrode for  $\lambda = 600 - 800$  nm, which is the same range over which the far-field optical transparency is observed to be reduced. Indeed the EQE is increased by  $\sim 25\%$  over the wavelength range of  $655 - 715$  nm, which coincides with the wavelength range over which the optical losses in the Cu nano-hole electrode due to inter-band transitions and free electrons damping are at a minimum (Figure 3(c)) and so surface plasmon resonances will be most intense. Conversely for  $\lambda < 575$  nm the EQE is reduced in line with the reduction in far-field transparency for devices using the Cu nano-hole electrode. Normalizing the difference in EQE to the transparency (%T) (Figure 3(c)) show that the onset of enhanced absorption actually occurs very close to the minimum in the optical losses for Cu.



**Figure 3:** (a) Representative current density –voltage characteristics in the dark and under one sun simulated solar illumination ( $100 \text{ mW cm}^{-2}$ ; AM 1.5G). **Inset:** Schematic representation of the device architecture.; (b) EQE for annealed (blue) and non-annealed (red) Cu electrodes for OPVs with the structure: Cu (11nm)/  $\text{MoO}_3$  (5 nm) / ClAlPc (20 nm) /  $\text{C}_{60}$  (40 nm) /BCP (5nm) / Al (80 nm).; (c) EQE/%T vs wavelength plot and imaginary component of the dielectric constant of  $\text{Cu}^{14}$  indicating inter-band transition losses and free electron losses.

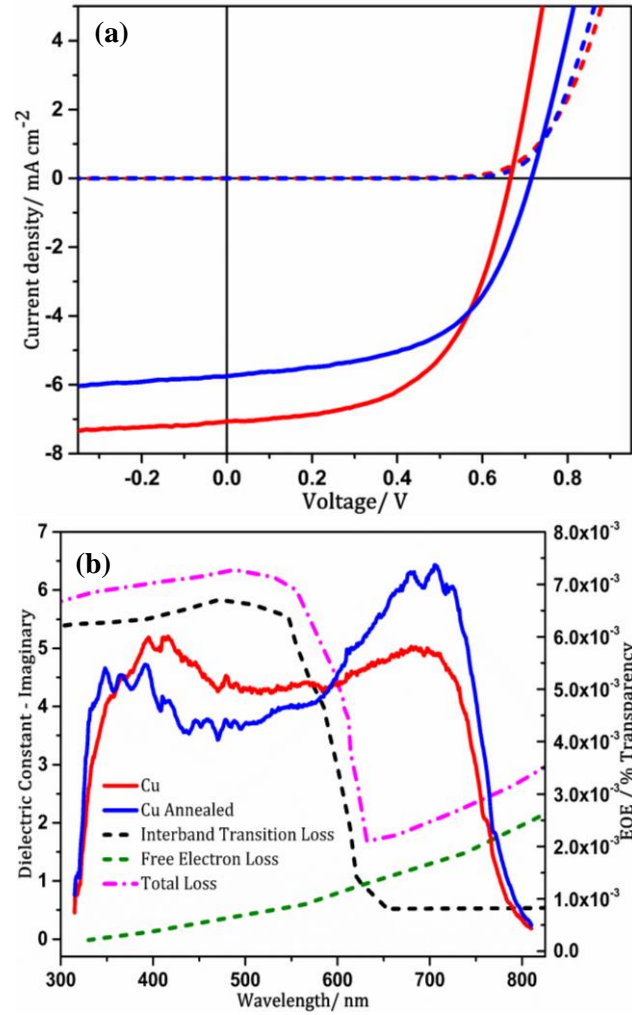
Interestingly, devices using a nano-hole electrode also consistently exhibit a higher  $V_{oc}$  and  $FF$  (Figure 3(a) and Table 1). It is evident from Figure 3(a) that this difference stems from the earlier onset of dark current injection and increased current leakage at reverse bias in devices using Cu electrodes without nano-holes. Since Cu is known to diffuse into evaporated  $\text{MoO}_{3-x}$  films at room temperature<sup>30,31</sup> it is possible that the former stems from a difference in the energy level alignment at the electrode-CIAIPc interface due to a variation in the extent of  $n$ -type doping of the  $\text{MoO}_{3-x}$  layer by  $\text{Cu}^{30}$  since the increase in crystallinity upon annealing would be expected to impart increased lattice stability, thereby reducing the thermodynamic drive for Cu diffusion into the neighbouring  $\text{MoO}_{3-x}$  layer. To test this hypothesis the crystallinity of the Cu electrodes before and after thermal annealing was probed using grazing angle X-ray diffraction films, and the work function of Cu /  $\text{MoO}_{3-x}$  (5 nm) bilayer films were measured using the contact potential difference method. It is evident from the X-ray diffraction pattern (Supplementary Information Figure S2) that the crystallinity is increased upon annealing because the intensity of the peak corresponding to reflection from the Cu (111) plane is more intense after annealing. The work function of the electrode/ $\text{MoO}_{3-x}$  bilayer is also significantly lower for the case in which the Cu electrode was not annealed; typical values were  $\sim 5.7$  eV and  $\sim 5.1$  eV for Cu electrodes with and without nano-holes respectively. Importantly, whilst this difference complicates the interpretation of device  $J_{sc}$ , it cannot explain the change in the shape of the EQE spectrum.

Electrode	Champion $J_{sc}/\text{mA cm}^{-2}$	$J_{sc}/\text{mA cm}^{-2}$ $\pm 1$ SD	$V_{oc}/\text{V}$ $\pm 1$ SD	$FF$ $\pm 1$ SD	%PCE $\pm 1$ SD
Non-Annealed (Without nanoholes)	2.71	$2.53 \pm 0.09$	$0.48 \pm 0.03$	$0.40 \pm 0.02$	$0.49 \pm 0.04$
Annealed (with nano-holes)	2.65	$2.44 \pm 0.11$	$0.60 \pm 0.02$	$0.49 \pm 0.01$	$0.72 \pm 0.05$

**Table 1:** Summary of current density - voltage characteristics under one sun simulated solar illumination for devices with the architecture: Cu (11nm)/  $\text{MoO}_3$  (5 nm) / CIAIPc (20 nm) /  $\text{C}_{60}$  (40 nm) /BCP (5nm) / Al (80 nm) with and without nano-holes in the Cu electrode.

To test the generality of the findings, OPVs were also fabricated using a bulk-heterojunction based on the narrow band gap polymer PCE10 in conjunction with [6,6]-phenyl- $\text{C}_{71}$ -butyric acid methyl ester (PCE10 :  $\text{PC}_{70}\text{BM}$ ) (100 nm) in place of CIAIPc: $\text{C}_{60}$ . Importantly in this device structure a smaller proportion of the total photoactive layer thickness is in the region of intense near-field near to the Cu electrode because the PCE10: $\text{PC}_{70}\text{BM}$  is 30% thicker than the CIAIPc: $\text{C}_{60}$  bilayer, and unlike the CIAIPc: $\text{C}_{60}$  the PCE10:  $\text{PC}_{70}\text{BM}$  absorbs strongly over a broad range of wavelengths, including in the range 450-600 nm where the Cu nano-hole electrode is not plasmon-active. Consequently, the  $J_{sc}$  in devices using nano-hole electrodes is lower than that without (Table 2). However, the EQE in devices

using the nano-hole electrode is still highest in that part of the spectrum where the electrode is least transparent, which corresponds to region over which Cu supports surface plasmonic excitations. It is also evident from Figure 4(b) that the onset of plasmon enhanced absorption occurs when the optical losses are a minimum and at the same wavelength as seen in the ClAlPc/C<sub>60</sub> OPVs; 590-600 nm (Figure 3(c)).



**Figure 4:** Representative (a) current density –voltage characteristics in the dark and under 1 sun simulated illumination for OPVs with the structure: Cu (11nm)/ MoO<sub>3</sub> (5 nm)/ PCE10 - PC<sub>70</sub>BM (100 nm) / BCP (5nm) /Al (80 nm); (b) EQE/%T vs wavelength plot and imaginary component of the dielectric constant of Cu<sup>14</sup> indicating inter-band transition losses and free electron losses.

Electrode	Thickness of MoO <sub>3</sub> / nm	$J_{sc} / \text{mA cm}^{-2} \pm 1 \text{ SD}$	$V_{oc} / \text{V} \pm 1 \text{ SD}$	$FF \pm 1 \text{ SD}$	$\%PCE \pm 1 \text{ SD}$
Non-Annealed	5	$7.08 \pm 0.16$	$0.65 \pm 0.04$	$0.56 \pm 0.02$	$2.78 \pm 0.52$
Annealed	5	$6.16 \pm 0.60$	$0.72 \pm 0.02$	$0.56 \pm 0.03$	$2.54 \pm 0.35$
Non-Annealed	15	$6.21 \pm 0.43$	$0.71 \pm 0.01$	$0.57 \pm 0.03$	$2.82 \pm 0.34$
Annealed	15	$4.75 \pm 0.36$	$0.74 \pm 0.01$	$0.53 \pm 0.03$	$1.91 \pm 0.22$

**Table 2:** Summary of current density - voltage characteristics of devices with the architecture; Cu (11nm)/ MoO<sub>3</sub> (5 and 15 nm)/ PCE10 - PC<sub>70</sub>BM (100 nm) / BCP (5nm) /Al (80 nm) tested under 1 sun simulated illumination.

To confirm the near-field nature of the light trapping mechanism, the thickness of the MoO<sub>3-x</sub> layer was increased from 5 to 15 nm. The key device performance parameters are summarised in Table 2. It is evident from Table 2 that the effect of increasing the MoO<sub>3-x</sub> layer thickness from 5 to 15 nm is much more pronounced for the device with the nano-hole electrode, which is consistent with the exponential decay of the near-field intensity into the photoactive layer (Figure 2(e)).

## Conclusions

Collectively the findings reported herein provide compelling evidence that light trapped as surface plasmon-resonant excitations in an optically thin Cu electrode with a random array of sub-optical wavelength apertures can be efficiently coupled into an adjacent strongly absorbing organic semiconductor layer before the competing process of thermalisation can occur. This study has focused on demonstration of proof-of-principle in model OPVs, rather than optimisation of device performance. Based on the findings presented it may prove better to locate an electrode of this type at the back of the device so that the shorter wavelength photons can be substantially absorbed in the organic semiconductor before reaching the Cu electrode, since optical losses in Cu for  $\lambda < 600 \text{ nm}$  are considerable.

## Acknowledgements

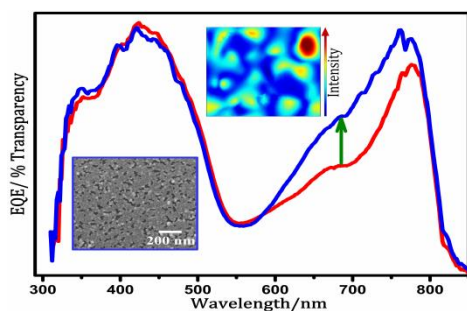
The authors would like to thank the United Kingdom Engineering and Physical Sciences Research Council (EPSRC) for funding (Grant number: EP/N009096/1) and the University of Warwick for the award of a Chancellor's International Scholarship to H. Jessica Pereira.

## References

- 1 B. Kippelen and J.-L. Bredas, *Energ Env. Sci*, 2009, **2**, 251–261.
- 2 B. P. Jelle, C. Breivik and H. Drolsum Røkenes, *Sol. Energy Mater. Sol. Cells*, 2012, **100**, 69–96.
- 3 X. Fan, F. Wang, Z. Chu, L. Chen, C. Zhang and D. Zou, *Appl. Phys. Lett.*, 2007, **90**, 1–4.
- 4 W. U. Huynh, J. J. Dittmer, a P. Alivisatos and P. Alivisatos, *Science (80-. )*, 2002, **295**, 2425–2427.
- 5 P. Friederich, V. Meded, A. Poschlad, T. Neumann, V. Rodin, V. Stehr, F. Symalla, D. Danilov, G. Lüdemann, R. F. Fink, I. Kondov, F. von Wrochem and W. Wenzel, *Adv. Funct. Mater.*, 2016, 5757–5763.
- 6 Z. Tang, W. Tress and O. Ingan??s, *Mater. Today*, 2014, **17**, 389–396.
- 7 H. A. Atwater and A. Polman, *Nat. Mater.*, 2010, **9**, 865–865.
- 8 Y. H. Jang, Y. J. Jang, S. Kim, L. N. Quan, K. Chung and D. H. Kim, *Chem. Rev.*, 2016, acs.chemrev.6b00302.
- 9 D. U. Karatay, M. Salvador, K. Yao, A. K. Y. Jen and D. S. Ginger, *Appl. Phys. Lett.*, 2014, **105**.
- 10 M. Kuno, *Introductory nanoscience : [physical and chemical concepts]*, Garland Science, 2012.
- 11 X. Li, W. C. H. Choy, L. Huo, F. Xie, W. E. I. Sha, B. Ding, X. Guo, Y. Li, J. Hou, J. You and Y. Yang, *Adv. Mater.*, 2012, **24**, 3046–3052.
- 12 B. Niesen, B. P. Rand, P. Van Dorpe, D. Cheyins, H. Shen, B. Maes and P. Heremans, *J. Phys. Chem. C*, 2012, **116**, 24206–24214.
- 13 W. P. Goh, E. L. Williams, R. Bin Yang, W. S. Koh, S. Mhaisalkar and Z. E. Ooi, *ACS Appl. Mater. Interfaces*, 2016, **8**, 2464–2469.
- 14 P. R. West, S. Ishii, G. V. Naik, N. K. Emani, V. M. Shalaev and A. Boltasseva, *Laser Photonics Rev.*, 2010, **4**, 795–808.
- 15 T. H. Park, N. Mirin, J. B. Lassiter, C. L. Nehl, N. J. Halas and P. Nordlander, *ACS Nano*, 2008, **2**, 25–32.
- 16 A. Uddin and X. Yang, *J Nanosci Nanotechnol*, 2014, **14**, 1099–1119.
- 17 T. Reilly, J. van de Lagemaat, R. Tenent, A. Morfa and K. Rowlen, *Appl. Phys. Lett.*, 2008, **92**.
- 18 H. M. Stec and R. A. Hatton, *Adv. Energy Mater.*, 2013, **3**, 193–199.
- 19 O. S. Hutter and R. A. Hatton, *Adv. Mater.*, 2015, **27**, 326–331.
- 20 G. H. Chan, J. Zhao, E. M. Hicks, G. C. Schatz and R. P. Van Duyne, *Nano Lett.*, 2007, **7**, 1947–1952.
- 21 C. Gong and M. S. Leite, *ACS Photonics*, 2016, **3**, 507–513.
- 22 O. S. Hutter, H. M. Stec and R. A. Hatton, *Adv. Mater.*, 2013, **25**, 284–288.
- 23 M. Grouchko, A. Kamyshny and S. Magdassi, *J. Mater. Chem.*, 2009, **19**, 3057.
- 24 B. Demirel, A. Yaraş and H. Elçiçek, *BAÜ Fen Bil. Enst. Derg. Cilt*, 2011, **13**, 26–35.
- 25 N. N. Lal, H. Zhou, M. Hawkeye, J. K. Sinha, P. N. Bartlett, G. A. J. Amaratunga and J. J. Baumberg, *Phys. Rev. B - Condens. Matter Mater. Phys.*, 2012, **85**.
- 26 C. C. (Clifford C. . Leznoff and A. B. P. (Alfred B. P. Lever, *Phthalocyanines : properties and applications*, VCH, 1989.
- 27 K. M. Kadish, K. M. Smith and R. Guilard, *The porphyrin handbook*, Academic Press, 2000.
- 28 M. Kröger, S. Hamwi, J. Meyer, T. Riedl, W. Kowalsky and A. Kahn, *Appl. Phys. Lett.*, 2009, **95**, 10–13.

- 29 R. T. White, E. S. Thibau and Z.-H. Lu, *Sci. Rep.*, 2016, **6**, 21109.
- 30 M. T. Greiner, L. Chai, M. G. Helander, W. M. Tang and Z. H. Lu, *Adv. Funct. Mater.*, 2013, **23**, 215–226.
- 31 D.-T. Nguyen, S. Vedraïne, L. Cattin, P. Torchio, M. Morsli, F. Flory and J. C. Bernède, *J. Appl. Phys.*, 2012, **112**, 63505.

## Table of contents



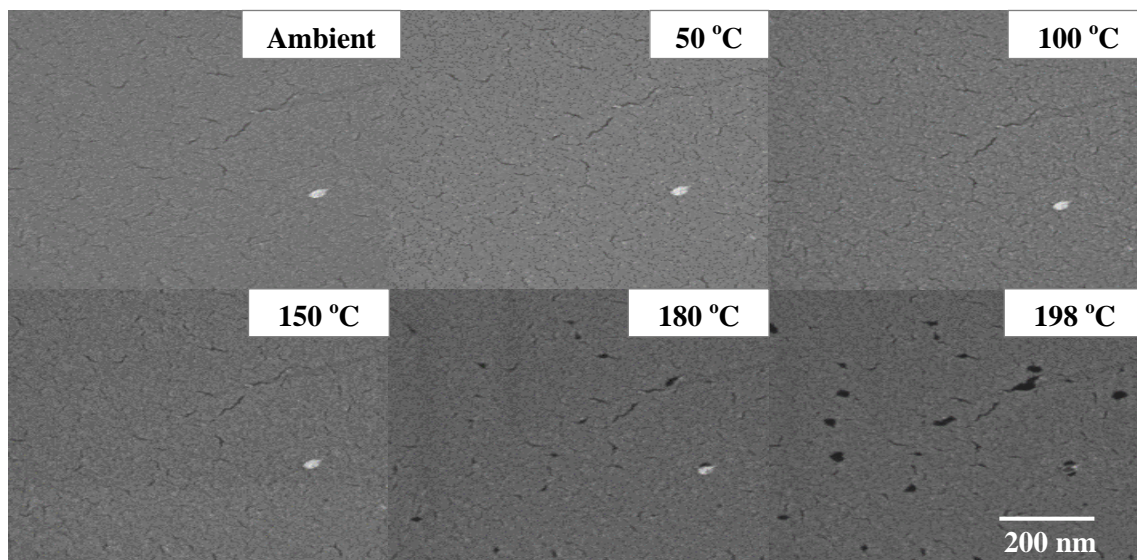
Plasmon-active optically thin copper films catch red light and transfer the energy to the photoactive layer in organic photovoltaic devices.



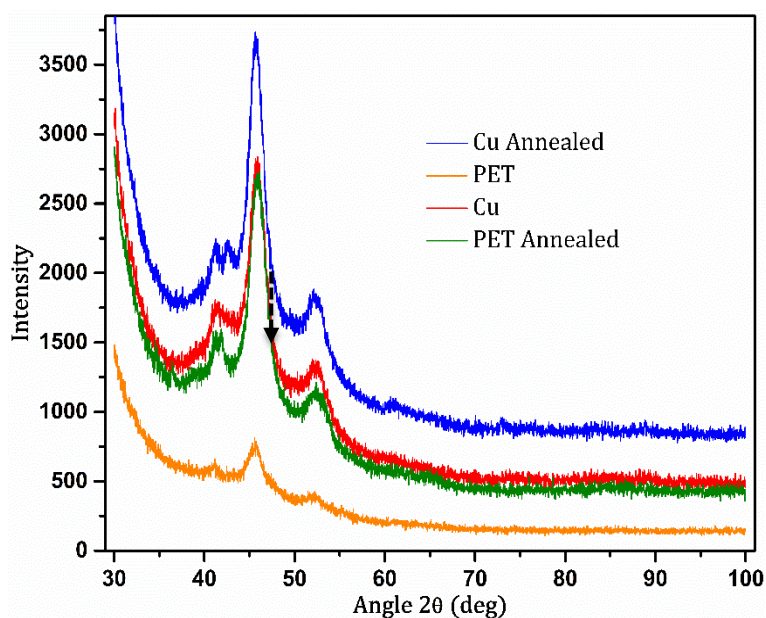
## Copper light-catching electrodes for organic photovoltaics

H. Jessica Pereira<sup>1</sup>, Oliver S. Hutter<sup>1,2</sup>, G Dinesha M R Dabera<sup>1</sup>, Luke Rochford<sup>1,3</sup> and Ross. A. Hatton<sup>1\*</sup>

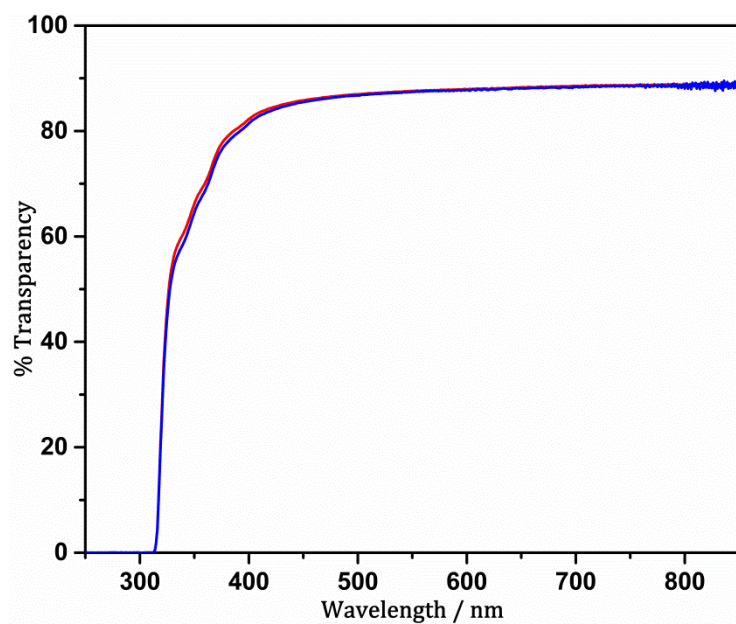
### Supplementary Information



**Figure S1:** SEM images of 11 nm thick Cu film on PET upon annealing from 50 °C to 198 °C using an SEM with a built-in heating stage.



**Figure S2:** XRD pattern of Cu films (11 nm) deposited on PET substrates before and after annealing at 175°C for 10 min in vacuum. The pattern corresponding to the annealed Cu film has been offset for clarity.



**Figure S3:** Far-field optical transparency of PET substrates before (red) and after (blue) annealing at 175°C for 10 min in high vacuum.