

Manuscript version: Author's Accepted Manuscript

The version presented in WRAP is the author's accepted manuscript and may differ from the published version or Version of Record.

Persistent WRAP URL:

<http://wrap.warwick.ac.uk/113097>

How to cite:

Please refer to published version for the most recent bibliographic citation information. If a published version is known of, the repository item page linked to above, will contain details on accessing it.

Copyright and reuse:

The Warwick Research Archive Portal (WRAP) makes this work by researchers of the University of Warwick available open access under the following conditions.

© 2019 Elsevier. Licensed under the Creative Commons Attribution-NonCommercial-NoDerivatives 4.0 International <http://creativecommons.org/licenses/by-nc-nd/4.0/>.



Publisher's statement:

Please refer to the repository item page, publisher's statement section, for further information.

For more information, please contact the WRAP Team at: wrap@warwick.ac.uk.

MILD-Net: Minimal Information Loss Dilated Network for Gland Instance Segmentation in Colon Histology Images

Simon Graham^{1,2}, Hao Chen³, Jevgenij Gamper^{1,2}, Qi Dou³, Pheng-Ann Heng³,
David Snead⁴, Yee Wah Tsang⁴, Nasir Rajpoot^{2,4,5}

¹*Mathematics for Real World Systems Centre for Doctoral Training, University of Warwick,
UK*

²*Department of Computer Science, University of Warwick, UK*

³*Department of Computer Science and Engineering, The Chinese University of Hong Kong,
China*

⁴*Department of Pathology, University Hospitals Coventry and Warwickshire, Coventry, UK*

⁵*The Alan Turing Institute, London, UK*

Abstract

The analysis of glandular morphology within colon histopathology images is an important step in determining the grade of colon cancer. Despite the importance of this task, manual segmentation is laborious, time-consuming and can suffer from subjectivity among pathologists. The rise of computational pathology has led to the development of automated methods for gland segmentation that aim to overcome the challenges of manual segmentation. However, this task is non-trivial due to the large variability in glandular appearance and the difficulty in differentiating between certain glandular and non-glandular histological structures. Furthermore, a measure of uncertainty is essential for diagnostic decision making. To address these challenges, we propose a fully convolutional neural network that counters the loss of information caused by max-pooling by re-introducing the original image at multiple points within the network. We also use *atrous* spatial pyramid pooling with varying dilation rates for preserving the resolution and multi-level aggregation. To incorporate uncertainty, we introduce random transformations during test time for an enhanced segmentation result that simultaneously generates an uncertainty map, highlighting areas of ambiguity. We show that this map can be used to define a

metric for disregarding predictions with high uncertainty. The proposed network achieves state-of-the-art performance on the GlaS challenge dataset and on a second independent colorectal adenocarcinoma dataset. In addition, we perform gland instance segmentation on whole-slide images from two further datasets to highlight the generalisability of our method. As an extension, we introduce MILD-Net⁺ for simultaneous gland and lumen segmentation, to increase the diagnostic power of the network.

Keywords: Gland instance segmentation, computational pathology, colorectal adenocarcinoma, deep learning

1. Introduction

Colorectal cancer is the third most commonly occurring cancer in men and the second most commonly occurring cancer in women, where approximately 95% of all colorectal cancers are adenocarcinomas (Fleming et al., 2012). Colorectal adenocarcinoma develops in the lining of the colon or rectum, which makes up
5 the large intestine and is characterised by glandular formation. Histological examination of the glands, most frequently with the Hematoxylin & Eosin (H&E) stain, is routine practice for assessing the differentiation of the cancer within colorectal adenocarcinoma. Pathologists use the degree of glandular formation
10 as an important factor in deciding the grade or degree of differentiation of the tumour. Within well differentiated cases, above 95% of the tumour is gland forming (Fleming et al., 2012), whereas in poorly differentiated cases, typical glandular appearance is lost. Within the top row of Figure 1, (a) shows a healthy case, (b) shows a moderately differentiated tumour and (c) shows a poorly
15 differentiated tumour. We observe the loss of glandular formation as the grade of cancer increases.

There is a growing trend towards a digitised pathology workflow, where digital images are acquired from glass histology slides using a scanning device. The advent of digital pathology has led to a rise in computational pathology, where
20 algorithms are implemented to assist pathologists in diagnostic decision making.

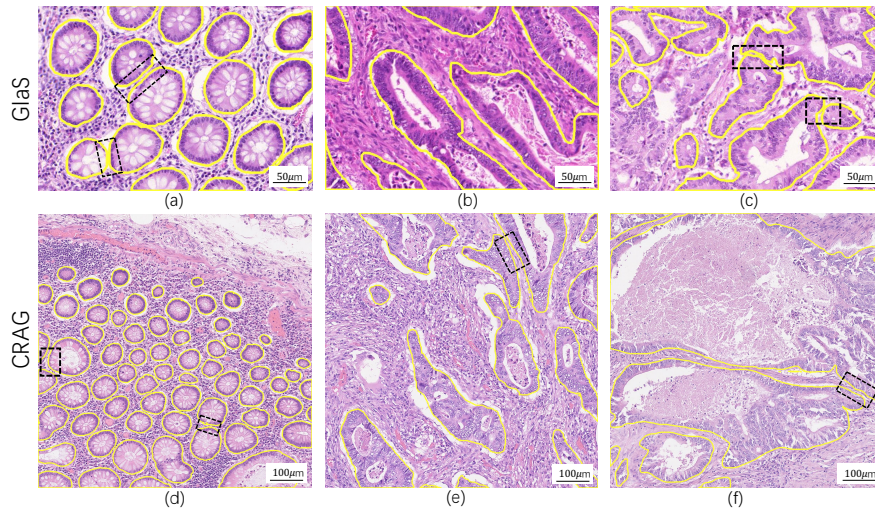


Figure 1: (a-c) Example images from the GlaS dataset (Sirinukunwattana et al., 2017). (d-f) Example images from the CRAG dataset. All images displayed have overlaid boundary ground truth as annotated by an expert pathologist and are at $20\times$ magnification. (a) and (d) show healthy glands, whereas the other images contain malignant glands. Black boxes highlight clustered glands.

In routine pathological practice, accurate segmentation of structures such as glands and nuclei are of crucial importance because their morphological properties can assist a pathologist in assessing the degree of malignancy (Compton, 2000; Hamilton et al., 2000; Washington et al., 2009). With the advent of computational
 25 pathology, digitised histology slides are being leveraged such that pathological segmentation tasks can be completed in an objective manner. In particular, automated gland segmentation within H&E images can enable pathologists to extract vital morphological features from large scale histopathology images, that would otherwise be impractical.

30 Computerized techniques play a significant role in automated digitalized histology image analysis, with applications to various tasks including but limited to nuclei detection and segmentation (Graham and Rajpoot, 2018; Chen et al., 2017; Sirinukunwattana et al., 2016), mitosis detection (Cireşan et al., 2013;

Chen et al., 2016a; Veta et al., 2015; Albarqouni et al., 2016), tumor segmenta-
35 tion (Qaiser et al., 2017), image retrieval (Sapkota et al., 2018; Shi et al., 2017),
cancer type classification (Graham et al., 2018; Kong et al., 2017; Bejnordi et al.,
2017; Lin et al., 2018; Qaiser et al., 2018), etc. Most of the previous literature
focused on the hand-crafted features for histopathological image analysis (Gurcan
et al., 2009). Recently, deep learning achieved great success on image recognition
40 tasks with powerful feature representation (Litjens et al., 2017; Shen et al., 2017;
LeCun et al., 2015). For example, U-Net achieved excellent performance on
the gland segmentation task (Ronneberger et al., 2015). To further improve
the gland instance segmentation performance, Chen et al. presented a deep
contour-aware network by formulating an explicit contour loss function in the
45 training process and achieved the best performance during the 2015 MICCAI
Gland Segmentation (GlaS) on-site challenge (Chen et al., 2016b, 2017; Sir-
inukunwattana et al., 2017). In addition, a framework was proposed in Xu et al.
(2016) by fusing complex multichannel regional and boundary patterns with side
supervision for gland instance segmentation. This work was extended in Xu
50 et al. (2017) to incorporate additional bounding box information for an enhanced
performance. A Multi-Input-Multi-Output network (MIMO-Net) was presented
for gland segmentation in Raza et al. (2017) and achieved the state-of-the-art
performance. Furthermore, several methods have investigated the segmentation
of glands from histology images using limited expert annotation effort. For
55 example, a deep active learning framework was presented in Yang et al. (2017)
for gland segmentation using suggestive annotation. Unannotated images were
utilized in Zhang et al. (2017) with the design of deep adversarial networks and
consistently good segmentation performance was attained.

However, automated gland segmentation remains a challenging task due to
60 several important factors. First, a high resolution level is needed for precise
delineation of glandular boundaries, that is important when extracting morpho-
logical measurements. Next, glands vary in their size and shape, especially as
the grade of cancer increases. Furthermore, the output of solely the gland object
gives limited information when making a diagnosis. Extra information, such as

65 the uncertainty of a prediction and the simultaneous segmentation of additional
histological components, may give additional diagnostic power. For example, the
pathologist may choose to ignore areas with high uncertainty, such as areas with
dense nuclei and areas containing artifacts. An additional histological component
of particular interest is the lumen, which is ultimately the defining structure of
70 a gland. This structure can help empower diagnostic decision making, because
its presence and morphology can be indicative of the grade of cancer.

In this paper we propose a minimal information loss dilated network that
aims to solve the key challenges posed by automated gland segmentation. During
feature extraction, we introduce minimal information loss (MIL) units, where we
75 incorporate the original down-sampled image into the residual unit after max-
pooling. This, alongside dilated convolution, helps retain maximal information
that is essential for segmentation, particularly at the glandular boundaries. We
use *atrous* spatial pyramid pooling for multi-level aggregation that is essential
when segmenting glands of varying shapes and sizes. After feature extraction, our
80 network up-samples the feature maps to localise the regions of interest. During
uncertainty quantification, we apply random transformations to the input images
as a method of generating the predictive distribution. This leads to a superior
segmentation result and allows us to observe areas of uncertainty that may be
clinically informative. Furthermore, we use this measure of uncertainty to rank
85 images that should be prioritised for pathologist annotation. As an extension,
we demonstrate how our method can be modified to simulatenously segment
the gland lumen. The additional segmentation of the gland lumen can empower
current automated methods to achieve a more accurate diagnosis.

Our proposed framework can be trained end to end, with one minimal informa-
90 tion loss dilated feature extraction network. Experimental results show that the
proposed framework achieves state-of-the-art performance on the 2015 MICCAI
GlaS Challenge dataset and on a second independent colorectal adenocarcinoma
dataset.

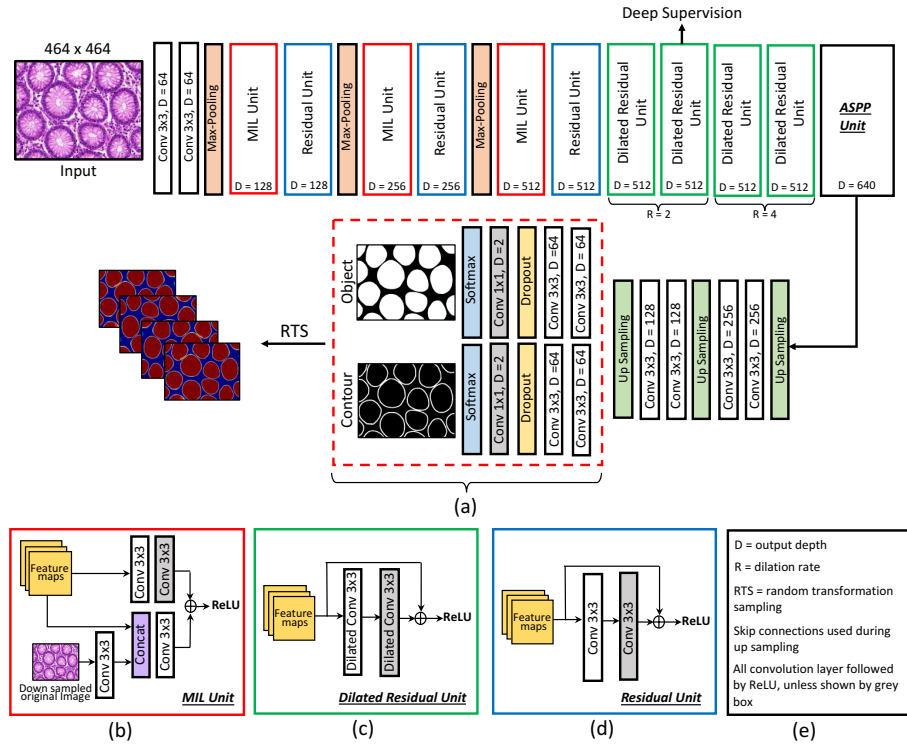


Figure 2: The overall framework of the proposed method. (a) Task specific component of the network. We show in section 2.3 how this component can be modified. (b-d) Illustration of the varying residual units. (e) Key showing important components of the framework.

2. Methods

95 2.1. Minimal Information Loss Dilated Network

Gland instance segmentation is a complex task that requires a significantly deep network for meaningful feature extraction. Therefore, we use residual units to allow efficient gradient propagation through our deep network architecture. Traditional convolutional neural networks use a combination of max-pooling and convolution in a hierarchical fashion to increase the size of the receptive field (LeCun et al., 2015). The inclusion of max-pooling results in the loss of information with relatively low activations (Sabour et al., 2017), that is important for pixel-level prediction in segmentation. A significant amount of downsampling

via max-pooling leads to a sub-optimal segmentation, particularly at thin object
105 boundaries and for small objects. To counter this loss of information, in addition
to using traditional residual units, we include two additional types of residual
units during feature extraction: MIL units and dilated residual units. The MIL
unit incorporates the original image into each residual unit directly after the
max-pooling layer. First, the original image is down-sampled to the same size
110 as the output of the pooling operation by bicubic interpolation. Then, a 3×3
convolution is applied before concatenating to the output of the pooling layer.
Next, a 3×3 convolution is applied to the concatenated block and this output
is subsequently used in the residual summation operation, as opposed to the
input tensor in traditional methods. Three MIL units are added during feature
115 extraction immediately after max-pooling. These MIL units can be seen in more
detail within part (a) of Figure 2. A traditional residual unit, which is defined
as:

$$\mathbf{y} = \mathcal{F}(\mathbf{x}, \mathbf{W}) + \mathbf{x} \quad (1)$$

where \mathbf{x} and \mathbf{y} denote the input and output vectors respectively and \mathbf{W} denotes
the weights within the residual unit. Specifically \mathcal{F} represents the function
120 $\mathbf{W}_2(\sigma(\mathbf{W}_1\mathbf{x}))$, where σ denotes ReLU, \mathbf{W}_1 denotes the weights of the first
convolution and \mathbf{W}_2 denotes the weights of the second convolution. The addition
of the the input vector \mathbf{x} to \mathcal{F} is shown by the summation operator \oplus in the
residual unit of part (d) in Figure 2. When we use a downsampled version of the
original image (downsampled with bicubic interpolation) without max-pooling,
125 it indirectly captures the variation in pixel intensities in the local neighbourhood
of each pixel without completely discarding the activations, as is the case with
max-pooling. It is this principle that allows the MIL unit to ensure that the
missing details are preserved. Equation (1) is modified to generate the MIL unit.
The MIL unit can be defined as:

$$\mathbf{y} = \mathcal{F}(\mathbf{x}, \mathbf{W}) + \mathcal{G}(\mathbf{x}, \mathbf{v}, \mathbf{M}) \quad (2)$$

130 where \mathcal{F} is defined in the same way as equation (1). The vector \mathbf{v} denotes the original down-sampled image and is incorporated into the function \mathcal{G} to minimise the loss of information. \mathcal{G} represents the function $\mathbf{M}_2(\sigma(\mathbf{M}_1\mathbf{v})\|\mathbf{x})$, where $\|$ denotes the concatenation operation. Similar to the traditional residual unit, \mathbf{M}_1 and \mathbf{M}_2 within function \mathcal{G} represent the weights of the convolution applied
 135 to the down-sampled image and the convolution of the concatenated feature maps respectively. The summation of \mathcal{F} and \mathcal{G} is shown by the \oplus symbol in the MIL unit within Figure 2.

Instead of downsampling the size of the input to increase the size of the receptive field, an alternate solution is to increase the size of the kernel during
 140 convolution. However, this practice is not feasible due to the huge amount of parameters required. Instead, dilated convolution uses sparse kernels (Yu and Koltun, 2015), such that the resolution of the original image is preserved, without significantly increasing the number of parameters. We incorporate dilated convolution into residual units simply by replacing each 3×3 convolution
 145 with a 3×3 dilated convolution. We initially down-sample using max-pooling and MIL units and then use dilated convolution when the image has been down-sampled by a factor of 8. We do not use dilated convolution throughout the entire network since otherwise the model does not fit into GPU memory. This is because convolving over the size of the original image requires a greater amount
 150 of parameters compared to when this image is down-sampled. Dilated residual units can be seen in part (b) of Figure 2. Minimising the loss of information allows us to perform a successful gland instance segmentation, without the need to incorporate additional information that is used in other methods (Chen et al., 2017). Retaining the information throughout the model allows the network to
 155 successfully segment small glandular objects and thin glandular contours. It must be noted that we output the contours for uncertainty map refinement; not for separating gland instances. This is explained further in section 2.2.

In addition, for effective multi-level aggregation, we apply *atrous* spatial pyramid pooling (ASPP) (Chen et al., 2018) to the output of the deep network.
 160 Within our framework, the goal of ASPP is to combat the challenge of detecting

glands of different cancer grades that display a high level of morphological heterogeneity. To achieve this, we merge together multiple dilated convolution layers, allowing us to explicitly control the size of the receptive field. Specifically, we use three dilated convolution operations, with rates 6, 12 and 18. When the
165 dilation rate is large, the dilated convolution reduces to a 1×1 convolution. This is because the dilated kernel becomes larger than the size of the input feature map. Instead, to incorporate global level context, we also use global average pooling. All operations are followed by an initial 1×1 convolution, a dropout layer with a rate of 0.5 and then a second 1×1 convolution for reducing the
170 depth of the output. The concatenation of these feature maps gives a powerful representation of the features extracted from the minimal information loss dilated network.

Although high-level contextual information can be generated within the deep neural network, it is crucial to incorporate low-level information for precisely
175 delineating the glandular boundaries. Directly upsampling by a factor of 8 to produce the output does not consider low-level information. Instead, similar to U-Net (Ronneberger et al., 2015), we choose to up-sample by a factor of 2 each time and concatenate low-level features to the start of each upsampling block. Before the concatenation, we apply a 1×1 convolution to increase the
180 depth of lower levels; ensuring that we have an equal contribution of both components during the concatenation. We concatenate the feature maps from the second convolution layer and the first two standard residual units. We find that this method of upsampling is especially important for precisely locating the boundaries where low-level features are particularly important. When the
185 features have been up-sampled to the resolution of the original image, the network splits into two separate branches: one for the gland object and one for the contour. We denote this part of the network the task specific component of the network and is shown by the dashed red box in Figure 2(a). We show an example of how the task specific component can be modified in section 2.3.
190 We add deep supervision to our network by calculating the auxiliary loss at the second dilated residual unit during feature extraction. This helps the network

to learn more discriminative features and encourages a faster convergence. We also add dropout layers immediately before the final 1×1 convolution, near the output of the network, with a rate of 0.5. The overall flow of the network can
195 be seen in Figure 2.

2.2. MILD-Net Loss Function

During training, we calculate the cross-entropy loss with respect to all outputs of the proposed network. Concretely, we define $\mathcal{L}_g, \mathcal{L}_c, \mathcal{L}_{a_g}, \mathcal{L}_{a_c}$ to be the gland, contour, gland auxiliary and contour auxiliary cross-entropy loss respectively
200 and are formally given below in equation (3).

$$\begin{aligned}
\mathcal{L}_g &= - \sum_{\mathbf{x} \in \chi} \log p_g(\mathbf{x}; \mathbf{w}_g) \\
\mathcal{L}_c &= - \sum_{\mathbf{x} \in \chi} \log p_c(\mathbf{x}; \mathbf{w}_c) \\
\mathcal{L}_{a_g} &= - \sum_{\mathbf{x} \in \chi} \log p_{a_g}(\mathbf{x}; \mathbf{w}_{a_g}) \\
\mathcal{L}_{a_c} &= - \sum_{\mathbf{x} \in \chi} \log p_{a_c}(\mathbf{x}; \mathbf{w}_{a_c})
\end{aligned} \tag{3}$$

Here, $p_g(\mathbf{x}; \mathbf{w}_g)$, $p_c(\mathbf{x}; \mathbf{w}_c)$, $p_{a_g}(\mathbf{x}; \mathbf{w}_{a_g})$ and $p_{a_c}(\mathbf{x}; \mathbf{w}_{a_c})$ represent the pixel-based softmax classification at the gland, contour, auxiliary gland and auxiliary contour output on input \mathbf{x} in image space χ , respectively. To obtain the overall loss for each component, the sum of the cross-entropy loss for each image is
205 calculated. Then, the overall loss function to be minimised during training is defined as:

$$\mathcal{L}_{total} = \mathcal{L}_g + \mathcal{L}_c + \lambda \mathcal{L}_{a_g} + \lambda \mathcal{L}_{a_c} + \gamma \|\mathbf{w}\|_2^2 \tag{4}$$

where discount weight λ decays the contribution of each auxiliary loss \mathcal{L}_{a_g} and \mathcal{L}_{a_c} during training. We initially set λ as 1, and divide the value by 10 after every eight training epochs. The selection of the initial λ and the decay strategy

210 was motivated by DCAN [Chen et al. \(2017\)](#), where they used a similar strategy. $\|\mathbf{w}\|_2^2$ denotes the regularisation term on weights $\mathbf{w} = \{\mathbf{w}_g, \mathbf{w}_c, \mathbf{w}_{a_g}, \mathbf{w}_{a_c}\}$, with regularisation parameter γ . We empirically set gamma to be 10^{-5} .

2.3. Random Transformation Sampling for Uncertainty Quantification

Current deep learning models have an ability to learn powerful feature representations and are capable of successfully mapping high dimensional input data to an output. However, this mapping is assumed to be accurate in such models and there is no quantification of how certain the model is of the prediction. Bayesian approaches to modeling, naturally involve uncertainty quantification by obtaining a posterior distribution over the parameters of the model, which therefore allows us to induce a predictive distribution for the unseen data. However, the tractability and scalability of Bayesian methods applied to shallow neural networks and their recent deeper counterparts have been a subject of research for the past several decades. Although significant progress has been made, inference of the posterior distribution over the model parameters remains computationally expensive. Recent work [\(Gal and Ghahramani, 2016\)](#) demonstrated that using a standard regularisation tool such as dropout is equivalent to variational approximation using Bernoulli distributions [\(Bishop, 2006\)](#) in deep learning. Therefore, this can be used to approximate the uncertainty over the model predictions [\(Gal, 2016\)](#). Standard variational dropout captures the uncertainty over the model weights, given the observed data. It is important to distinguish that there may be noise inherent to each observation, that we might not be able to reduce by obtaining more data. This would be crucial to estimate within clinical applications. Generally, this uncertainty is estimated through a data dependent noise model [\(Kendall and Gal, 2017\)](#), however it would require us to modify the existing architecture. Therefore, to capture observation dependent noise, we perform random transformations to the input images during test time. To obtain the predictive distribution, we apply a random transformation $\Phi(\mathbf{x})$ on a sample of n images, where Φ performs a flip, rotation, Gaussian blur, median blur or adds Gaussian noise on input image \mathbf{x} to obtain $\{\Phi_1, \Phi_2, \dots, \Phi_n\}$. Each

240 image within the sample is then processed, where the mean of this processed
sample gives the refined prediction and the variance gives the uncertainty. Due
to the aggregation of the predictions of multiple transformed images, our model
will naturally perform well, particularly for areas that are generally difficult to
classify. Similarly, recent work leveraged transformed images, but instead are
245 utilised to obtain informative priors (Nalisnick and Smyth, 2018), that help a
model become more invariant to these specific transformations. However, the
primary aim for utilising RTS is to obtain a measure of uncertainty that may
be informative within clinical practice, as opposed to making our model more
invariant. We can define the prediction and uncertainty as:

$$\mu = \frac{1}{n} \sum_{i=1}^n f(\Phi_i(\mathbf{x}); \mathbf{w}); \quad \sigma = \frac{1}{n} \sum_{i=1}^n (f(\Phi_i(\mathbf{x}); \mathbf{w}) - \mu)^2 \quad (5)$$

250 where μ defines the segmentation prediction, σ defines the uncertainty and n
defines the number of transformations. The function f denotes the deep neural
network with input \mathbf{x} and output taken after the softmax layer. \mathbf{w} denotes the
weights and Φ_i defines a random transformation i to input image \mathbf{x} . Note, that
the output of σ is a two-dimensional image, where high values denote pixels with
255 high uncertainty.

We propose a metric to give individual glands a score of uncertainty, based
on the uncertainty map generated via random transformation sampling (RTS).
This measure highlights glands that are generally hard to classify, irrespective of
the number training examples that the model has seen. We suggest that it is
260 reasonable to disregard segmented glands that have an uncertainty score above
a given threshold, because in practice features would not be extracted from
areas of general ambiguity. We first remove the boundaries by subtracting the
predicted contours that have been output by the network and then calculate the
object-level uncertainty score for each predicted instance k as: $\tau_k = \frac{1}{n} \sum_{i=1}^n \hat{\sigma} \rho_{k,i}$,
265 where $\hat{\sigma}$ is the boundary removed uncertainty map and $\rho_{k,i}$ is the predicted
binary output of pixel i within instance k . We define n as the number of pixels
within predicted instance k . We remove the boundaries because these areas show

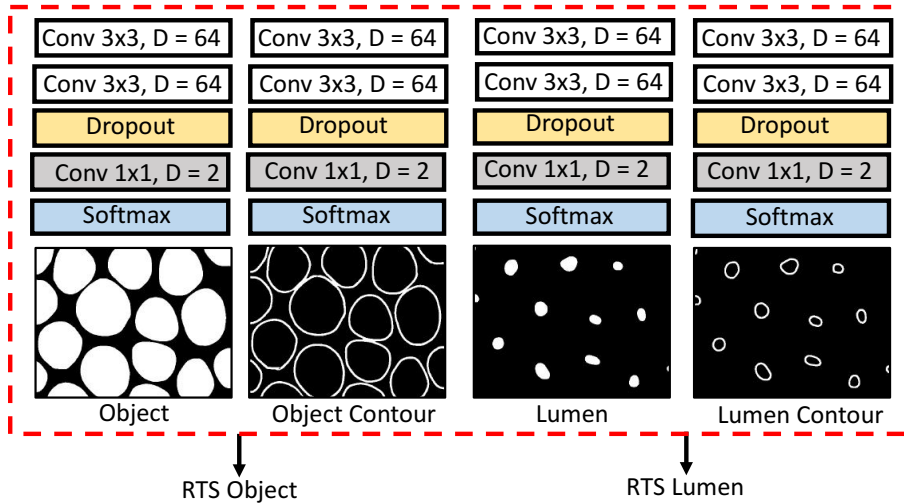


Figure 3: MILD-Net⁺. The red dashed box denotes the modified component of MILD-Net⁺. We observe that the network segments the gland, gland contour, lumen and lumen contour, whilst only applying a small modification to the original network.

the transition between the two classes and therefore the uncertainty here can't be avoided. Given a selected global threshold for our uncertainty score τ , we
 270 may only consider segmented glands with a score below this threshold.

2.4. MILD-Net⁺ for Simultaneous Gland and Lumen Segmentation

We extend MILD-Net such that it simultaneously segments the lumen and the gland, in order to increase the diagnostic power of the network. For example, when the grade of cancer increases, tumours tend to become solid and lose their
 275 luminal properties. Therefore, the additional segmentation of the lumen can empower current automated colorectal cancer classification methods, due to the introduction of additional important diagnostic features. In order to achieve this simultaneous segmentation, the network requires minimal modification. MILD-Net⁺ takes an image as input and, identically to MILD-Net, extracts features
 280 via the minimal information loss encoder. After upsampling to the original resolution, the task-specific component of the network is modified such that it

has four branches. The only difference between MILD-Net and MILD-Net⁺ is the number of branches after the network is up-sampled back to the size of the original image. Specifically, the part of the architecture shown by the red dashed box displayed in Figure 2(a) is replaced with the one in Figure 3. We observe that the majority of the network is unchanged apart from the addition of two branches at the end of the up-sampling path. As a result, MILD-Net⁺ does not require many additional parameters to achieve an accurate and simultaneous gland and lumen segmentation. This highlights the ability of MILD-Net⁺ to extract a rich set of features. Similar to what we have done before, we apply RTS to both the gland and the lumen and use the gland and lumen contours to refine the output of each uncertainty map. Consequently, MILD-Net⁺ segments diagnostically important features, whilst quantifying the uncertainty for each segmented component.

2.5. MILD-Net⁺ Loss Function

In the same fashion as Section 2.2, we calculate the cross-entropy loss with respect to the output of each component of MILD-Net⁺. Specifically, we calculate the cross entropy loss with respect to the gland, gland contour, lumen and lumen contour denoted by \mathcal{L}_g , \mathcal{L}_{gc} , \mathcal{L}_l and \mathcal{L}_{lc} respectively. We also calculate the auxiliary losses \mathcal{L}_{a_g} and \mathcal{L}_{a_l} with respect to the gland and the lumen. Then, during training, the overall loss function of MILD-Net⁺ is defined as:

$$\mathcal{L}_{total} = \mathcal{L}_g + \mathcal{L}_{gc} + \mathcal{L}_l + \mathcal{L}_{lc} + \lambda\mathcal{L}_{a_g} + \lambda\mathcal{L}_{a_l} + \gamma\|\boldsymbol{\theta}\|_2^2 \quad (6)$$

where $\|\boldsymbol{\theta}\|_2^2$ denotes the regularisation term on weights $\boldsymbol{\theta} = \{\boldsymbol{\theta}_g, \boldsymbol{\theta}_{gc}, \boldsymbol{\theta}_l, \boldsymbol{\theta}_{lc}, \boldsymbol{\theta}_{a_g}, \boldsymbol{\theta}_{a_l}\}$, with regularisation parameter γ . We use the same γ as MILD-Net, with a value of 10^{-5} . Also, we use the same λ that was utilised within MILD-Net that decays the contribution of the auxiliary loss during training. In a similar vein, we also divide the value by 10 after every eight training epochs. Note, that we choose not include the auxiliary loss with respect to the contours in order to reduce the number of parameters in MILD-Net⁺.

3. Experiments and Results

3.1. Datasets and Pre-processing

For our experiments, we used two datasets: (i) the Gland Segmentation (GlaS) challenge dataset (Sirinukunwattana et al., 2017), used as part of MICCAI 2015, and (ii) a second independent colon adenocarcinoma dataset, which for simplicity we refer to as the colorectal adenocarcinoma gland (CRAG) dataset¹, that was originally used in Awan et al. (2017). Both datasets were obtained from the University Hospitals Coventry and Warwickshire (UHCW) NHS Trust in Coventry, United Kingdom. Within (i), data was extracted from 16 H&E stained histological WSIs, scanned with a Zeiss MIRAX MIDI Slide Scanner with a pixel resolution of $0.465\mu\text{m}/\text{pixel}$. After scanning, the WSIs were rescaled to $0.620\mu\text{m}/\text{pixel}$ (equivalent to $20\times$ objective magnification) and then a total of 165 image tiles were extracted. These 165 images consist of 85 training (37 benign and 48 malignant) and 80 test images (37 benign and 43 malignant). Furthermore, the test images are split into two test sets: Test A and Test B. Test A was released to the participants of the GlaS challenge one month before the submission deadline, whereas Test B was released on the final day of the challenge. Further information on the dataset can be found in the published challenge paper (Sirinukunwattana et al., 2017). Images are mostly of size 775×522 pixels and all training images have associated instance-level segmentation ground truth that precisely highlight the gland boundaries. In addition, two expert pathologists (D.S, Y.W.T) provide accurate lumen annotations for all glands within the GlaS dataset. Within (ii), we have a total of 213 H&E CRA images taken from 38 WSIs scanned with an Omnyx VL120 scanner with a pixel resolution of $0.55\mu\text{m}/\text{pixel}$ ($20\times$ objective magnification). All 38 WSIs are from different patients and are mostly of size 1512×1516 pixels, with corresponding instance-level ground truth. The CRAG dataset is split into 173 training images and 40 test images with different cancer grades. For both datasets, we set 20% of the training set aside for evaluating

¹The CRAG dataset for gland segmentation will be released on acceptance of this paper

the performance of our model during training. Examples of images from each of the two datasets can be seen in Figure 1.

We extracted patches of size 500×500 and augmented patches with elastic
340 distortion, random flip, random rotation, Gaussian blur, median blur and colour
distortion. Finally, we randomly cropped a patch of size 464×464 , before input
into the proposed network.

3.2. Whole-Slide Image Processing

In addition to processing the image tiles as described in Section 3.1, we
345 further investigated the ability of our method by processing a set of colorectal
adenocarcinoma WSIs. This dataset consists of 16 high resolution WSIs, taken
from the COMET dataset, which was originally used in [Sirinukunwattana et al.
\(2016\)](#). Within this dataset, the WSIs are obtained from two different centres
and therefore we split the images into two further datasets. We name the
350 dataset corresponding to WSIs from the first centre as COMET-1 and the
dataset containing WSIs from the second centre as COMET-2. COMET-1 is
from the same centre as the image tiles that the algorithm was trained on,
whereas COMET-2 is from a different centre completely. We introduce the
second centre to test how our method generalises to new data. The data is
355 divided equally, such that 8 WSIs are taken from each centre. Because it is quite
laborious to obtain pixel-based glandular annotations for each WSI, we select
two high-power fields (HPFs) from each WSI of size 2500×2500 pixels at $20 \times$.
As a result, even though we process the whole-slide to see how our algorithm
performs visually, we use these selected HPFs to perform quantitative comparison.
360 HPFs were extracted such that we had an even representation of benign and
malignant regions, annotated by two expert pathologists (D.S, Y.W.T). In order
to satisfy this criteria, we mainly processed WSIs that contained a combination
of malignant and benign glands.

3.3. Implementation Details

We implemented our framework with the open-source software library Ten-
365 sorFlow version 1.3.0 ([Abadi et al., 2016](#)). We used Xavier initialisation ([Glorot](#)

and Bengio, 2010) for the weights of the model, where they were drawn from a Gaussian distribution. Concretely, weight w_i is initialised with mean 0 and variance $\frac{1}{n_{w_i}}$, where, n_{w_i} refers to the number of input neurons to weight i . We trained our model on a workstation equipped with one NVIDIA GEFORCE Titan X GPU for 30 epochs (60,000 steps) on the GlaS dataset and 75 epochs (200,000 steps) on the CRAG dataset. The difference in the number of steps until convergence reflects the greater variability of the CRAG dataset. We used Adam optimisation with an initial learning rate of 10^{-4} and a batch size of 2.

3.4. Evaluation and Comparison

We assessed the performance of our method by using the same evaluation criteria used in the MICCAI GlaS challenge, consisting of F_1 score, object-level dice and object-level Hausdorff distance (Sirinukunwattana et al., 2017). The F_1 score is employed to measure the detection accuracy of individual glandular objects, the Dice index is a measure of similarity between two sets of samples and the Hausdorff distance measures the boundary-based segmentation accuracy. We implemented several state-of-the-art segmentation methods including SegNet (Badrinarayanan et al., 2015), FCN-8 (Long et al., 2015) and a DeepLab-v3 (Chen et al., 2018) model for extensive comparative analysis. For gland segmentation, we also report the results obtained by two recent methods including MIMO-Net (Raza et al., 2017), that uses a multi-input-multi-output convolutional neural network and two methods that utilise deep multichannel side supervision (Xu et al., 2016, 2017).

For all methods, including MILD-Net, the final binary maps are obtained by applying a threshold of 0.5 to all predicted probability maps. A morphological opening operation is then used with a disk filter radius 5 to obtain the final result. This disk size was empirically selected because it gave the best visual and quantitative results.

In this section, we first show results for MILD-Net on the GlaS dataset and the CRAG dataset. Next, we display results of MILD-Net for whole-slide image (WSI) processing. Finally, we report results of MILD-Net⁺ on the GlaS dataset.

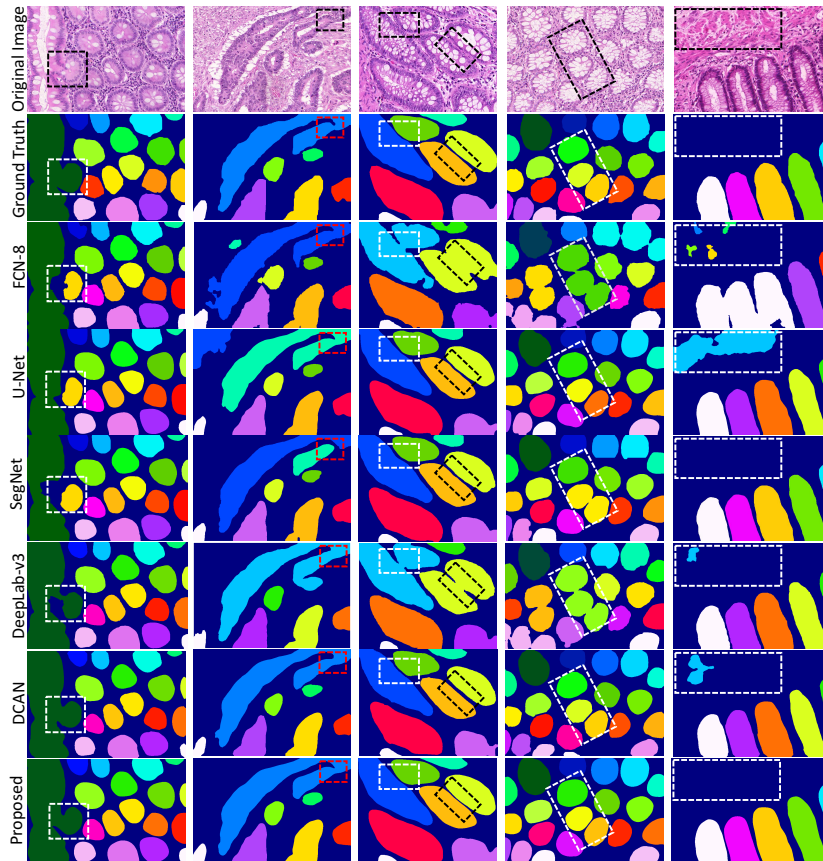


Figure 4: Visual gland segmentation results on the GlaS dataset. We compare our method to state-of-the-art methods including FCN-8, U-Net, SegNet, DCAN and DeepLab-v3. Note, visual results for U-Net and DCAN are the results as submitted to the GlaS challenge.

3.4.1. Results on GlaS and CRAG Datasets Using MILD-Net

We can see from Table 1 that our proposed network achieves state-of-the-art performance compared to all methods on the 2015 MICCAI GlaS Challenge dataset. We also validated the efficacy of our method on the CRAG dataset, demonstrating overall better performance in comparison with other methods and highlighting the good generalisation capability of our method on different datasets. Results on the CRAG dataset can be seen in Table 2. We can

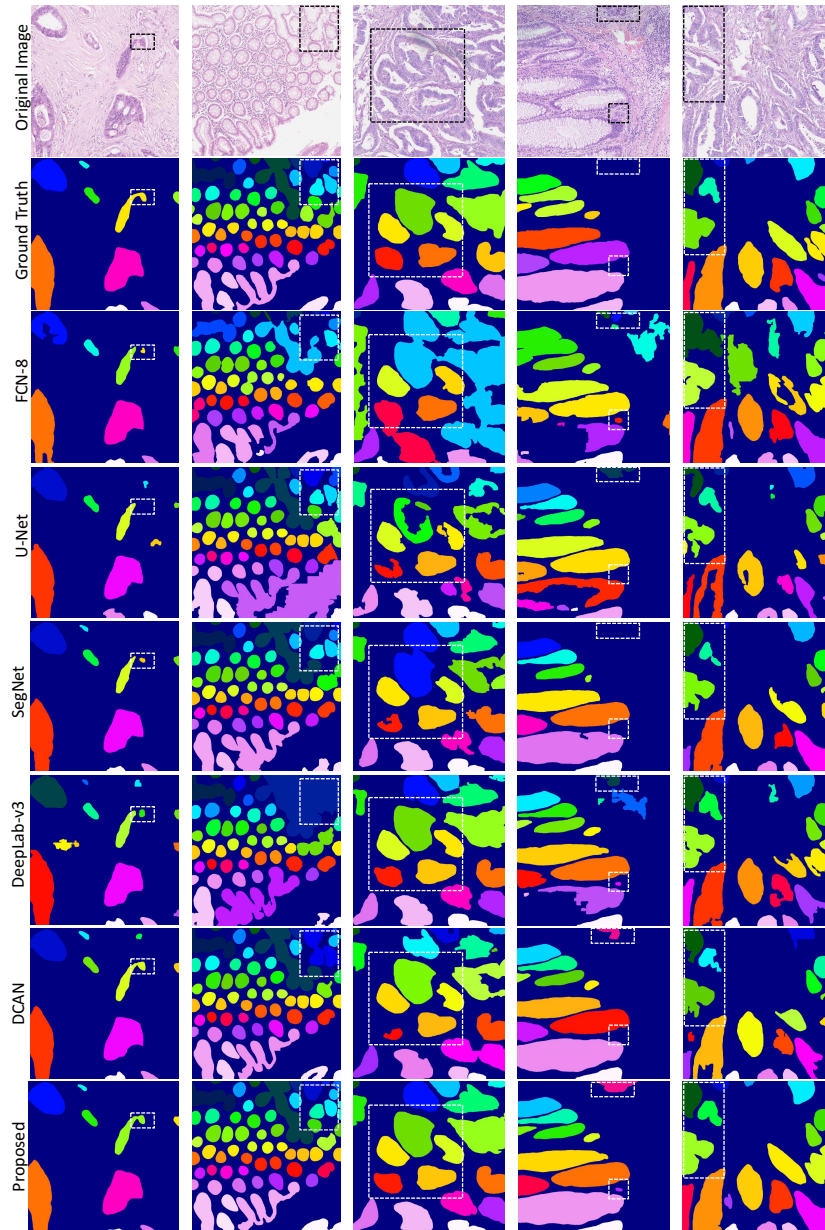


Figure 5: Visual gland segmentation results on the CRAG dataset. We compare our method to state-of-the-art methods including FCN-8, U-Net, SegNet, DCAN and DeepLab-v3.

Table 1: Comparative analysis of models on the GlaS challenge dataset. CUMedVision submissions use the method reported in [Chen et al. \(2016b\)](#) and Freidburg submissions use the method reported in [Ronneberger et al. \(2015\)](#). S and R denote score and rank respectively.

	F_1 Score						Obj. Dice						Obj. Hausdorff						Rank	
	Test A			Test B			Test A			Test B			Test A			Test B			S	R
	S	R		S	R		S	R		S	R		S	R		S	R			
MILD-Net	0.914	1	0.844	1	0.913	1	0.836	1	41.54	1	105.89	1	6							
Xu et al. (2017)	0.893	5	0.843	2	0.908	2	0.833	2	44.13	2	116.82	2	15							
MIMO-Net	0.913	2	0.724	7	0.906	3	0.785	9	49.15	4	133.98	6	31							
Xu et al. (2016)	0.858	11	0.771	3	0.888	5	0.815	3	54.20	5	129.93	5	33							
DeepLab	0.862	10	0.764	5	0.859	13	0.804	5	65.72	9	124.97	4	46							
SegNet	0.858	11	0.753	6	0.864	12	0.807	4	62.62	10	118.51	3	46							
FCN-8	0.783	14	0.692	12	0.795	14	0.767	10	105.04	12	147.28	9	71							
CUMedVision2	0.912	3	0.716	9	0.897	4	0.781	11	45.42	3	160.35	13	43							
ExB1	0.891	7	0.703	10	0.882	8	0.786	7	57.41	10	145.58	7	49							
ExB3	0.896	4	0.719	8	0.886	6	0.765	13	57.36	9	159.87	12	52							
Freidburg2	0.87	8	0.695	11	0.876	9	0.786	7	57.09	7	148.47	10	52							
CUMedVision1	0.868	9	0.769	4	0.867	11	0.8	6	74.6	13	153.65	11	54							
ExB2	0.892	6	0.686	13	0.884	7	0.754	14	54.79	6	187.44	15	61							
Freidburg1	0.834	13	0.605	14	0.875	10	0.783	10	57.19	8	146.61	8	63							
CVML	0.652	16	0.541	15	0.644	17	0.654	15	155.43	17	176.24	14	94							
LIB	0.777	15	0.306	17	0.781	15	0.617	16	112.71	16	190.45	16	95							
vision4GlaS	0.635	17	0.527	16	0.737	16	0.61	17	107.49	15	210.1	17	98							

Table 2: Comparative analysis of models on the CRAG dataset. S and R denote score and rank respectively.

	F_1 Score		Obj. Dice		Obj. Hausdorff		Rank
	S	R	S	R	S	R	Sum
MILD-Net	0.825	1	0.875	1	160.14	1	3
DCAN	0.736	2	0.794	2	218.76	2	6
DeepLab	0.648	3	0.745	3	281.45	4	10
SegNet	0.622	4	0.739	4	247.84	3	11
U-Net	0.600	5	0.654	5	354.09	5	15
FCN-8	0.558	6	0.640	6	436.43	6	18

Table 3: MILD-Net performance with random transformation sampling (RTS) on the CRAG and GlaS datasets.

Dataset	Model	F_1 Score	Obj. Dice	Obj. Hausdorff
GlaS A	MILD-Net	0.914	0.908	42.32
	MILD-Net-RTS	0.914	0.913	41.54
GlaS B	MILD-Net	0.809	0.822	117.91
	MILD-Net-RTS	0.844	0.836	105.89
CRAG	MILD-Net	0.806	0.867	162.35
	MILD-Net-RTS	0.825	0.875	160.14

see from Table 3 that utilising test time random transformations leads to an
405 improved performance, due to a refined prediction within areas of high uncertainty.
Additionally, we compared our method of RTS to Monte Carlo dropout sampling.
However, because we don't apply many dropout layers within our network, there
is not sufficient variation in the samples to have a profound effect. We also
experimented by adding additional dropout layers with Monte Carlo dropout,
410 but this had a detrimental effect during the training of the network. Because
RTS utilises an averaging technique, the number of false positives in areas of high
uncertainty is reduced. This explains the increase in performance with RTS. It

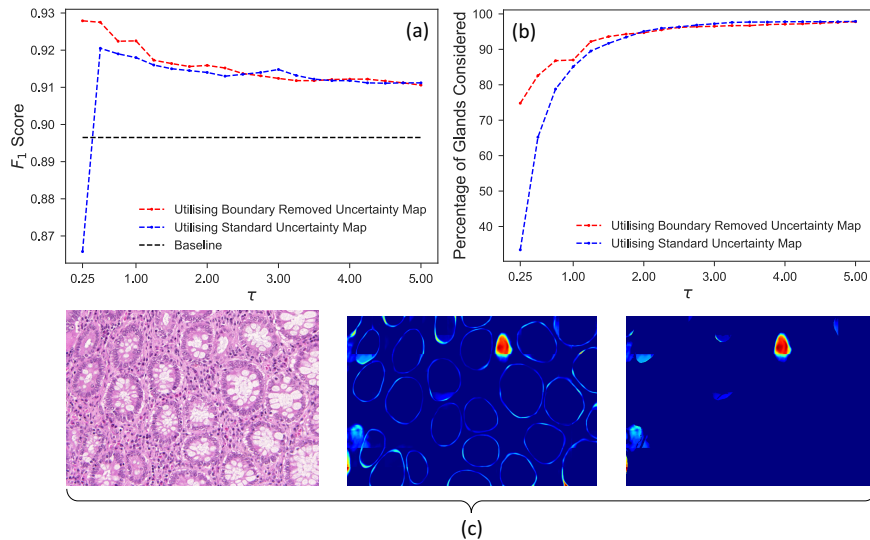


Figure 6: Object-level uncertainty quantification. (a) shows the F_1 score as we disregard predictions with an uncertainty score τ_k greater than a given threshold τ . (b) The percentage of total instances considered, given a threshold τ . For the red dashed line, we use the boundary removed uncertainty map, whereas for the blue dashed line we use the standard uncertainty map. The black horizontal line shows the F_1 score when no glands with a high uncertainty are removed. (a) and (b) relate to results on the combined set of test A and test B. (c) from left to right: original image; uncertainty map σ ; boundary removed uncertainty map $\hat{\sigma}$. For each instance k within $\hat{\sigma}$, an object-level uncertainty score τ is calculated.

must be noted that it is significantly more difficult to segment glands within the CRAG dataset than when using the GlaS dataset. This is because there are many
415 malignant cases where the glandular boundaries are very ambiguous. Examples
of results from different methods are shown in Figure 4 and 5. We can see
that our method can generate more accurate gland instance segmentation with
precisely delineated boundaries and well segmented instances. It is interesting
to see that within the dashed boxes in the last column of Figure 4, our proposed
420 algorithm was able to detect tumorous areas that were not picked up by the
pathologist.

In Figure 6, we show the relationship between the performance and the

uncertainty score τ . This score is used as a threshold, where we only consider
 predictions k with an uncertainty score τ_k lower than τ . We observe from
 425 Figure 6 that it seems sensible to only consider segmented predictions with an
 uncertainty score τ_k below 1. This preserves a large proportion of the dataset,
 whilst significantly increasing the performance. We also display the effect of
 using the boundary removed uncertainty map. We observe that removing the
 boundary allows us to preserve a larger proportion of the dataset when we are
 430 using lower thresholds for the removal of predictions with high uncertainty. This
 suggests that using the boundary removed uncertainty map allows us to correctly
 remove the uncertain cases that contribute most negatively to the performance.
 Therefore, utilising the boundary removed uncertainty map is more robust and
 can be effectively be used to select predictions with low uncertainty. It is
 435 interesting to note that we are still able to preserve around 75% of instances
 by selecting predictions with τ_k below 0.25. As a result, F_1 score, object dice
 and object Hausdorff can be increased to 0.930, 0.9359 and 28.658 for test set A
 and increased to 0.913, 0.9567 and 22.70 for test set B. It must be noted that
 the intuition of disregarding glands with high uncertainty means that we should
 440 not extract any statistical measures from these disregarded glands. Therefore,
 when removing predicted instances with high uncertainty, we also remove the
 corresponding ground truth instance to obtain the above measures.

3.4.2. Results on Whole-Slide Images Using MILD-Net

Within part (a-d) of Figure 7, the inner-most image is the original WSI
 445 with overlaid glandular boundaries, the central column shows the two HPFs
 for statistical analysis at $20\times$ and the outer-most column shows a selected
 region of each HPF at $40\times$. We observe that our proposed method is able
 to accurately segment glands within colon whole-slide histology images with a
 precise delineation of glandular boundaries. Therefore, as a result of training on
 450 both the GlaS and the CRAG dataset, our method is capable of extracting a
 strong set of features that enables a successful transition to WSI processing. We
 also note from part (c) and (d) of Figure 7, that MILD-Net generalises well to

completely unseen data from different centres. A particularly interesting aspect of COMET-2 is that most images contain pathologist pen markings. However,
455 as a result of the strong set of features that MILD-Net is able to extract no pre-processing was needed to avoid these regions, where other methods may have failed. For a thorough analysis, we obtain quantitative results for all HPFs extracted from the 16 WSIs. In total, we have 32 HPFs: 16 from COMET-1 and 16 from COMET-2. In order to test the performance of our algorithm on both
460 benign and malignant cases, we ensured an equal representation of both benign and malignant glands. We can see from Table 4 that the proposed method has a similar performance between the two datasets, highlighting the generalisability of our method. Despite a good detection performance, we can see that the Hausdorff distance within malignant cases is significantly higher than those
465 results reported on the GlaS and the CRAG dataset. The Hausdorff distance measure indicates how closely the shape of two objects match with each other. As a result, disagreement at the boundary will lead to deterioration in performance. Therefore, this suggests that the algorithm finds it challenging to precisely locate the glandular boundaries within malignant cases. This however reflects the true
470 difficulty in segmenting glands within whole-slide histology images, where there are often many ambiguous regions. After careful observation, we state that the lower performance for Hausdorff distance is not due to a limitation of the algorithm, but because a number of malignant cases are generally difficult to segment.

475 3.4.3. Results on GlaS and CRAG Datasets Using MILD-Net⁺

To demonstrate the performance of MILD-Net⁺, we compare our algorithm to four recent segmentation methods trained solely for the task of lumen segmentation. Namely, these methods are FCN-8 (Long et al., 2015), U-Net (Ronneberger et al., 2015), SegNet (Badrinarayanan et al., 2015) and DeepLab-v3 (Chen et al.,
480 2018). We chose not to compare with DCAN (Chen et al., 2016b) because this network was specifically tuned to achieve instance segmentation. Instance segmentation is not an issue for lumen segmentation, because neighbouring lumen

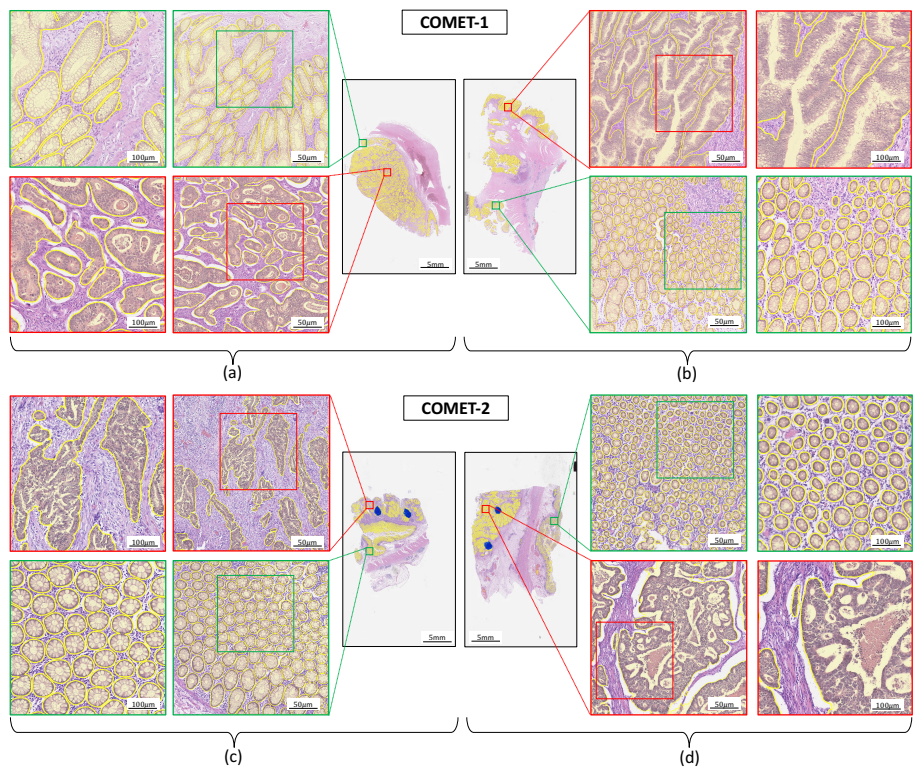


Figure 7: Visual results of gland segmentation in WSIs using the proposed framework. (a) and (b) show processed images using COMET-1, whilst (c) and (d) show processed images using COMET-2. Red regions show malignant areas of interest, whereas green regions show benign areas of interest. The central column of images within (a), (b), (c) and (d) shows the two HPFs extracted from each WSI for statistical analysis.

physically can't touch within histology images. The only exception for this would be if there was an artifact within the image. From Figure 8, we observe that our
485 algorithm is able to precisely segment both the gland object and the gland lumen. We can see in Table 5, that MILD-Net⁺ achieves superior performance in all statistical measures for lumen segmentation, compared to all competing methods. This is particularly interesting because all other competing methods were trained for the single task of lumen segmentation. Therefore, this reiterates the strong
490 feature extraction capabilities of the minimal information loss network. Despite

Table 4: MILD-Net gland segmentation performance on HPFs from WSIs. B stands for average benign score and M stands for average malignant score.

	F_1 Score		Obj. Dice		Obj. Hausdorff	
	B	M	B	M	B	M
COMET-1	0.811	0.817	0.822	0.867	158.40	389.89
COMET-2	0.948	0.716	0.886	0.751	76.15	474.12
Average COMET-1	0.814		0.845		274.15	
Average COMET-2	0.832		0.819		275.14	

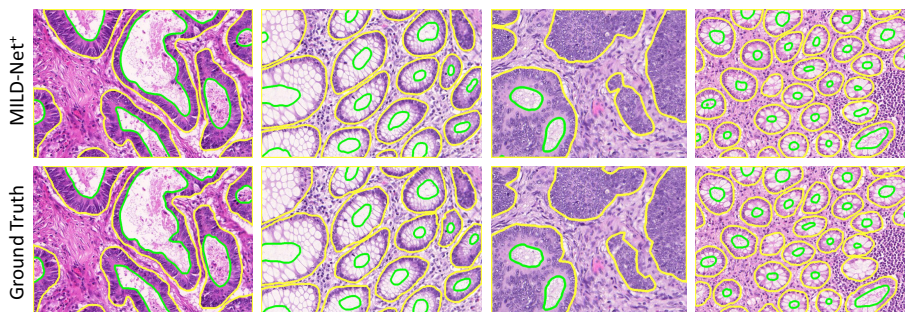


Figure 8: Visual results of gland and lumen segmentation. The top row displays the output of the proposed method. The bottom row displays the pathologist annotation. Yellow contours show the outline the glandular boundaries and green contours show the outline of the lumen boundaries.

achieving state-of-the-art performance at the output of the lumen branch, it is necessary to ensure that we still achieve a good accuracy at the output of the gland object branch. We observe that, MILD-Net⁺ out-performs MILD-Net on most of the statistical measures, suggesting that segmenting the lumen may provide additional cues to strengthen the segmentation of the gland object.

4. Discussion

Analysis of Hematoxylin and Eosin stained histology slides is considered as the "gold standard" in histology based diagnosis. However, visual analysis

Table 5: MILD-Net⁺ lumen segmentation performance on the GlaS challenge dataset

		F_1 Score		Obj. Dice		Obj. Hausdorff	
		Test A	Test B	Test A	Test B	Test A	Test B
Lumen	MILD-Net⁺	0.825	0.711	0.875	0.816	26.81	94.09
	DeepLab	0.757	0.521	0.816	0.722	46.49	136.81
	SegNet	0.698	0.661	0.791	0.781	56.22	110.32
	U-Net	0.623	0.425	0.724	0.643	73.51	152.52
	FCN-8	0.744	0.556	0.778	0.723	60.51	133.09
Gland	MILD-Net⁺	0.920	0.820	0.918	0.836	39.39	103.07
	MILD-Net	0.914	0.844	0.913	0.836	41.54	105.89
	CUMedVision2	0.912	0.716	0.897	0.781	45.42	160.35

is very time consuming and laborious because pathologists are required to
 500 thoroughly examine each case to ensure an accurate diagnosis. Furthermore,
 due to the complex nature of the task, histopathological diagnosis often suffers
 from inter- and intra-observer variability. Computational techniques aim to
 counter the challenges posed within routine pathology by providing an objective
 and potentially more accurate diagnosis. In order to improve the diagnostic
 505 capabilities of automated methods, we present a minimal information loss dilated
 network for the accurate segmentation of glands within colon histology images.
 Subsequently, gland based features can be used to empower the diagnostic
 decision made by the pathologist.

Extensive experimentation on multiple datasets demonstrates the superior
 510 performance of our approach compared to other competing methods. Further-
 more, our method performs well when applied to the WSI, highlighting the
 network’s strong feature extraction capabilities. As a result, the network may be
 used in a clinical setting to segment glandular structures within the WSI with a
 high level of accuracy. We also show that the method generalises well to new
 515 data and can therefore be expected to work well within other centres.

It is worth noting, that the minimal information loss network helps retain

the spatial information within the network and therefore leads to a successful segmentation at the glandular boundaries. Therefore, additional cues are not needed to separate the majority of touching instances. However, it must be noted
520 that this method is able to separate glands when they are very close together, but may fail when the glands are physically touching with no pixels in between. We do not see this as a cause for concern because the majority of instances can be separated by our method due to the reduction of information loss throughout the network. We also observe from our results that our network was able to
525 successfully segment glands of various sizes. This in part was because of the addition of the *atrous* spatial pyramid pooling module that enlarged the size of the receptive field with varying dilation rates.

The addition of RTS increased the performance of the algorithm, whilst simultaneously generating an uncertainty map. We have shown that this uncer-
530 tainty map can be used as additional information about where the algorithm is uncertain. Also, we have shown that if we choose not to extract features from predictions with high uncertainty, we can significantly increase the performance whilst maintaining a large proportion of the dataset. We can ensure that we retain a larger proportion of this dataset if we use a boundary removed uncertainty
535 map. The removal of predictions with high uncertainty is particularly important for gland-based feature extraction (e.g glandular aberrance (Awan et al., 2017)) because features should not be extracted from glands where the algorithm is not confident. This workflow mimics clinical practice because the pathologist would not make a diagnosis from areas of ambiguity. Therefore, this uncertainty map
540 can be used to extract relatively strong features for subsequent grading.

The proposed network may fail to distinguish between the lumen of the gastrointestinal tract and the glandular lumen. However, this is to be expected because of a very similar appearance between these histological components. As well as this, we only used small image tiles for developing our algorithm and
545 therefore contextual information to empower the segmentation is limited. In future work, we may incorporate a larger input size to provide additional context to the algorithm.

With a small modification, the network is able to precisely segment the lumen of the gland. We also observed that the segmentation is very accurate
550 within benign glands. This is positive because we presumed that there may have been confusion between luminal areas and areas containing goblet cells. After performing this segmentation, luminal features can be used to empower current automated classification methods, that are limited to features extracted from solely the gland object. We also observe that the additional segmentation of the
555 lumen leads to an overall superior gland segmentation. This suggests that the lumen can provide additional cues to help increase the overall performance of gland instance segmentation.

In future work we will develop our proposed method for successful and fast whole-slide image processing. Therefore, we aim to adapt our method such
560 that it can process a WSI in a short amount of time, whilst maintaining a similar level of accuracy. Our current method utilises RTS for uncertainty map generation. Although this uncertainty map is very informative, we must develop a non-ensembling approach if we plan to efficiently process the WSI in a short amount of time. As well as this, we will develop an effective pre-processing
565 pipeline to ensure non-informative regions are not processed. On another note, it must be made clear that this algorithm is currently limited to colon cancer because of the data that it was trained on. The work could be extended such that we are able to segment the glands within other tissue, given that we have sufficient data.

570 **5. Conclusion**

In this paper, we presented a minimal information loss dilated network for gland instance segmentation in colon histology images. The proposed network retains maximal information during feature extraction that is very important for successful gland instance segmentation. Furthermore, in order to segment
575 glands of various sizes, we use *atrous* spatial pyramid pooling for effective multi-scale aggregation. To incorporate uncertainty within our framework, we apply

random transformations to images during test time. Taking the average of this sample leads to a superior segmentation, whilst simultaneously allowing us to visualise areas of ambiguity. Furthermore, we propose an object-level uncertainty score that can be used for assessing whether to discard predictions with high uncertainty. We also highlight the generalisability of our method by processing whole-slide images from a different centre with high accuracy. As an extension, we show how our proposed method can be adapted such that it simultaneously segments the gland lumen and the gland object. We observe that our method obtains state-of-the-art performance in the MICCAI 2015 gland segmentation challenge and on a second independent colorectal adenocarcinoma dataset.

6. Acknowledgements

An earlier version of this work was presented at the Medical Imaging with Deep Learning (MIDL) conference in Amsterdam in July 2018. The authors are grateful to the Warwick Global Partnership Fund (GPF) 2017/18 for funding this collaboration between Warwick and CUHK. H.C, Q.D and P.-A.H are supported by the Hong Kong Innovation and Technology Commission, under ITSP Tier 3 (project number: ITS/041/16).

References

- Abadi, M., Barham, P., Chen, J., Chen, Z., Davis, A., Dean, J., Devin, M., Ghemawat, S., Irving, G., Isard, M., et al., 2016. Tensorflow: a system for large-scale machine learning., in: OSDI, pp. 265–283.
- Albarqouni, S., Baur, C., Achilles, F., Belagiannis, V., Demirci, S., Navab, N., 2016. Aggnet: deep learning from crowds for mitosis detection in breast cancer histology images. *IEEE transactions on medical imaging* 35, 1313–1321.
- Awan, R., Sirinukunwattana, K., Epstein, D., Jefferyes, S., Qidwai, U., Aftab, Z., Mujeeb, I., Snead, D., Rajpoot, N., 2017. Glandular morphometrics for objective grading of colorectal adenocarcinoma histology images. *Scientific reports* 7, 16852.

- 605 Badrinarayanan, V., Kendall, A., Cipolla, R., 2015. Segnet: A deep convolutional encoder-decoder architecture for image segmentation. arXiv preprint arXiv:1511.00561 .
- Bejnordi, B.E., Veta, M., Van Diest, P.J., Van Ginneken, B., Karssemeijer, N., Litjens, G., Van Der Laak, J.A., Hermsen, M., Manson, Q.F., Balkenhol, M.,
610 et al., 2017. Diagnostic assessment of deep learning algorithms for detection of lymph node metastases in women with breast cancer. *Jama* 318, 2199–2210.
- Bishop, C.M., 2006. Pattern recognition and machine learning. springer .
- Chen, H., Dou, Q., Wang, X., Qin, J., Heng, P.A., et al., 2016a. Mitosis detection in breast cancer histology images via deep cascaded networks., in: *AAAI*, pp.
615 1160–1166.
- Chen, H., Qi, X., Yu, L., Dou, Q., Qin, J., Heng, P.A., 2017. Dcan: Deep contour-aware networks for object instance segmentation from histology images. *Medical image analysis* 36, 135–146.
- Chen, H., Qi, X., Yu, L., Heng, P.A., 2016b. Dcan: deep contour-aware networks
620 for accurate gland segmentation, in: *Proceedings of the IEEE conference on Computer Vision and Pattern Recognition*, pp. 2487–2496.
- Chen, L.C., Papandreou, G., Kokkinos, I., Murphy, K., Yuille, A.L., 2018. Deeplab: Semantic image segmentation with deep convolutional nets, atrous convolution, and fully connected crfs. *IEEE transactions on pattern analysis and machine intelligence* 40, 834–848.
625
- Cireşan, D.C., Giusti, A., Gambardella, L.M., Schmidhuber, J., 2013. Mitosis detection in breast cancer histology images with deep neural networks, in: *International Conference on Medical Image Computing and Computer-assisted Intervention*, Springer. pp. 411–418.
- 630 Compton, C.C., 2000. Updated protocol for the examination of specimens from patients with carcinomas of the colon and rectum, excluding carcinoid tumors,

- lymphomas, sarcomas, and tumors of the vermiform appendix: a basis for checklists. *Archives of pathology & laboratory medicine* 124, 1016–1025.
- Fleming, M., Ravula, S., Tatishchev, S.F., Wang, H.L., 2012. Colorectal carcinoma: pathologic aspects. *Journal of gastrointestinal oncology* 3, 153. 635
- Gal, Y., 2016. *Uncertainty in Deep Learning*. Ph.D. thesis. University of Cambridge.
- Gal, Y., Ghahramani, Z., 2016. Dropout as a bayesian approximation: Representing model uncertainty in deep learning, in: *international conference on machine learning*, pp. 1050–1059. 640
- Glorot, X., Bengio, Y., 2010. Understanding the difficulty of training deep feedforward neural networks, in: *Proceedings of the thirteenth international conference on artificial intelligence and statistics*, pp. 249–256.
- Graham, S., Rajpoot, N.M., 2018. Sams-net: Stain-aware multi-scale network for instance-based nuclei segmentation in histology images, in: *2018 IEEE 15th International Symposium on Biomedical Imaging (ISBI 2018)*, IEEE. pp. 590–594. 645
- Graham, S., Shaban, M., Qaiser, T., Khurram, S.A., Rajpoot, N., 2018. Classification of lung cancer histology images using patch-level summary statistics, in: *Medical Imaging 2018: Digital Pathology*, International Society for Optics and Photonics. p. 1058119. 650
- Gurcan, M.N., Boucheron, L., Can, A., Madabhushi, A., Rajpoot, N., Yener, B., 2009. Histopathological image analysis: A review. *IEEE reviews in biomedical engineering* 2, 147.
- Hamilton, S.R., Aaltonen, L.A., et al., 2000. *Pathology and genetics of tumours of the digestive system*. volume 48. IARC press Lyon:.
- Kendall, A., Gal, Y., 2017. What uncertainties do we need in bayesian deep learning for computer vision?, in: *Advances in neural information processing systems*, pp. 5574–5584. 655

- 660 Kong, B., Wang, X., Li, Z., Song, Q., Zhang, S., 2017. Cancer metastasis detection via spatially structured deep network, in: International Conference on Information Processing in Medical Imaging, Springer. pp. 236–248.
- LeCun, Y., Bengio, Y., Hinton, G., 2015. Deep learning. *nature* 521, 436.
- Lin, H., Chen, H., Dou, Q., Wang, L., Qin, J., Heng, P.A., 2018. Scannet: A
665 fast and dense scanning framework for metastatic breast cancer detection from whole-slide image, in: 2018 IEEE Winter Conference on Applications of Computer Vision (WACV), IEEE. pp. 539–546.
- Litjens, G., Kooi, T., Bejnordi, B.E., Setio, A.A.A., Ciompi, F., Ghafoorian, M., Van Der Laak, J.A., Van Ginneken, B., Sánchez, C.I., 2017. A survey on deep
670 learning in medical image analysis. *Medical image analysis* 42, 60–88.
- Long, J., Shelhamer, E., Darrell, T., 2015. Fully convolutional networks for semantic segmentation, in: Proceedings of the IEEE conference on computer vision and pattern recognition, pp. 3431–3440.
- Nalisnick, E., Smyth, P., 2018. Learning priors for invariance, in: International
675 Conference on Artificial Intelligence and Statistics, pp. 366–375.
- Qaiser, T., Mukherjee, A., Reddy Pb, C., Munugoti, S.D., Tallam, V., Pitkäaho, T., Lehtimäki, T., Naughton, T., Berseth, M., Pedraza, A., et al., 2018. Her 2 challenge contest: a detailed assessment of automated her 2 scoring algorithms in whole slide images of breast cancer tissues. *Histopathology* 72, 227–238.
- 680 Qaiser, T., Tsang, Y.W., Epstein, D., Rajpoot, N., 2017. Tumor segmentation in whole slide images using persistent homology and deep convolutional features, in: Annual Conference on Medical Image Understanding and Analysis, Springer. pp. 320–329.
- Raza, S.E.A., Cheung, L., Epstein, D., Pelengaris, S., Khan, M., Rajpoot, N.M.,
685 2017. Mimonet: Gland segmentation using multi-input-multi-output convolutional neural network, in: Annual Conference on Medical Image Understanding and Analysis, Springer. pp. 698–706.

- Ronneberger, O., Fischer, P., Brox, T., 2015. U-net: Convolutional networks for biomedical image segmentation, in: International Conference on Medical image computing and computer-assisted intervention, Springer. pp. 234–241.
690
- Sabour, S., Frosst, N., Hinton, G.E., 2017. Dynamic routing between capsules, in: Advances in Neural Information Processing Systems, pp. 3856–3866.
- Sapkota, M., Shi, X., Xing, F., Yang, L., 2018. Deep convolutional hashing for low dimensional binary embedding of histopathological images. IEEE Journal of Biomedical and Health Informatics .
695
- Shen, D., Wu, G., Suk, H.I., 2017. Deep learning in medical image analysis. Annual review of biomedical engineering 19, 221–248.
- Shi, X., Xing, F., Xu, K., Xie, Y., Su, H., Yang, L., 2017. Supervised graph hashing for histopathology image retrieval and classification. Medical image analysis 42, 117–128.
700
- Sirinukunwattana, K., Pluim, J.P., Chen, H., Qi, X., Heng, P.A., Guo, Y.B., Wang, L.Y., Matuszewski, B.J., Bruni, E., Sanchez, U., et al., 2017. Gland segmentation in colon histology images: The glas challenge contest. Medical image analysis 35, 489–502.
- 705 Sirinukunwattana, K., Raza, S.E.A., Tsang, Y.W., Snead, D.R., Cree, I.A., Rajpoot, N.M., 2016. Locality sensitive deep learning for detection and classification of nuclei in routine colon cancer histology images. IEEE transactions on medical imaging 35, 1196–1206.
- Veta, M., Van Diest, P.J., Willems, S.M., Wang, H., Madabhushi, A., Cruz-Roa, A., Gonzalez, F., Larsen, A.B., Vestergaard, J.S., Dahl, A.B., et al., 2015. Assessment of algorithms for mitosis detection in breast cancer histopathology images. Medical image analysis 20, 237–248.
710
- Washington, M.K., Berlin, J., Branton, P., Burgart, L.J., Carter, D.K., Fitzgibbons, P.L., Halling, K., Frankel, W., Jessup, J., Kakar, S., et al., 2009. Protocol

- 715 for the examination of specimens from patients with primary carcinoma of
the colon and rectum. *Archives of pathology & laboratory medicine* 133,
1539–1551.
- Xu, Y., Li, Y., Liu, M., Wang, Y., Lai, M., Eric, I., Chang, C., 2016. Gland
instance segmentation by deep multichannel side supervision, in: *International*
720 *Conference on Medical Image Computing and Computer-Assisted Intervention*,
Springer. pp. 496–504.
- Xu, Y., Li, Y., Wang, Y., Liu, M., Fan, Y., Lai, M., Eric, I., Chang, C., 2017.
Gland instance segmentation using deep multichannel neural networks. *IEEE*
Transactions on Biomedical Engineering 64, 2901–2912.
- 725 Yang, L., Zhang, Y., Chen, J., Zhang, S., Chen, D.Z., 2017. Suggestive annotation:
A deep active learning framework for biomedical image segmentation, in:
International Conference on Medical Image Computing and Computer-Assisted
Intervention, Springer. pp. 399–407.
- Yu, F., Koltun, V., 2015. Multi-scale context aggregation by dilated convolutions.
730 arXiv preprint arXiv:1511.07122 .
- Zhang, Y., Yang, L., Chen, J., Fredericksen, M., Hughes, D.P., Chen, D.Z., 2017.
Deep adversarial networks for biomedical image segmentation utilizing unan-
notated images, in: *International Conference on Medical Image Computing*
and Computer-Assisted Intervention, Springer. pp. 408–416.