

BMJ Open Improving best practice for patients receiving hospital discharge letters: a realist review

Katharine Weetman,¹ Geoff Wong,² Emma Scott,¹ Eilidh MacKenzie,³ Stephanie Schnurr,⁴ Jeremy Dale¹

To cite: Weetman K, Wong G, Scott E, *et al.* Improving best practice for patients receiving hospital discharge letters: a realist review. *BMJ Open* 2019;**9**:e027588. doi:10.1136/bmjopen-2018-027588

► Prepublication history and additional material for this paper are available online. To view these files, please visit the journal online (<http://dx.doi.org/10.1136/bmjopen-2018-027588>).

Received 30 October 2018

Revised 25 February 2019

Accepted 15 May 2019



© Author(s) (or their employer(s)) 2019. Re-use permitted under CC BY. Published by BMJ.

¹Unit of Academic Primary Care, Warwick Medical School, University of Warwick, Coventry, UK

²Nuffield Department of Primary Care Health Sciences, Medical Sciences Division, University of Oxford, Oxford, UK

³Warwick Medical School, University of Warwick, Coventry, UK

⁴Centre for Applied Linguistics, University of Warwick, Coventry, UK

Correspondence to

Katharine Weetman;
K.Weetman@warwick.ac.uk

ABSTRACT

Objective To understand how different outcomes are achieved from adult patients receiving hospital discharge letters from inpatient and outpatient settings.

Design Realist review conducted in six main steps: (1) development of initial theory, (2) searching, (3) screening and selection, (4) data extraction and analysis, (5) data synthesis and (6) programme theory (PT) refinement.

Eligibility criteria Documents reporting evidence that met criteria for relevance to the PT. Documents relating solely to mental health or children aged <18 years were excluded.

Analysis Data were extracted and analysed using a realist logic of analysis. Texts were coded for concepts relating to context, mechanism, outcome configurations (CMOCs) for the intervention of patients receiving discharge letters. All outcomes were considered. Based on evidence and our judgement, CMOCs were labelled 'positive' or 'negative' in order to clearly distinguish between contexts where the intervention does and does not work.

Results 3113 documents were screened and 103 were included. Stakeholders contributed to refining the PT in step 6. The final PT included 48 CMOCs for how outcomes are affected by patients receiving discharge letters. 'Patient choice' emerged as a key influencer to the success (or not) of the intervention. Important contexts were identified for both 'positive' CMOCs (eg, no new information in letter) and 'negative' CMOCs (eg, letter sent without verifying patient contact details). Two key findings were that patient understanding is possibly greater than clinicians perceive, and that patients tend to express strong preference for receiving letters. Clinician concerns emerged as a barrier to wider sharing of discharge letters with patients, which may need to be addressed through organisational policies and direction.

Conclusions This review forms a starting point for explaining outcomes associated with whether or not patients receive discharge letters. It suggests several ways in which current processes might be modified to support improved practice and patient experience.

INTRODUCTION

Background

Discharge communication may follow an inpatient or outpatient discharge; it typically comprises written discharge information in the form of a discharge letter or summary. It

Strengths and limitations of this study

- First study to review and develop realist theories about patients receiving discharge letters.
- The engagement of patients, general practitioners and commissioners in refining the programme theory increased relevance and rigour of the theory.
- The programme theory is likely to be applicable and relevant to multiple healthcare settings.
- The exclusion criteria imposed restrictions on the programme theory such that evidence relating to children, solely to mental health and those lacking capacity is not considered.
- Only sources written in the English Language were included.

is a well-established practice that the physician who is to follow-up patient care, typically the general practitioner (GP) or equivalent,¹ should receive written *discharge communication* from the discharging physician; this practice supports continuity of care between specialist services and primary care. Patients are sometimes included in this communication, and while within the UK this is considered to be 'good practice',² is not standardised.

The *Department of Health* in the UK describes patient copies of letters as a 'right',³ and recommend patients should be copied in where appropriate as a 'rule', unless there is risk of harm.^{2,3} This is intended to support patient understanding and well-being, increase patient safety and the quality of information sent and improve doctor-patient relationships.²⁻⁴ More recently, the *Academy of Medical Royal Colleges* released the 'please write to me'⁵ initiative. The initiative encourages doctors to write directly to patients in simple plain English to increase understanding. Despite these initiatives and guidelines, evidence within and outside the UK reports both benefits⁶⁻¹⁰ (eg, patient satisfaction), and drawbacks¹¹⁻¹⁵ (eg, patient confusion) of patients receiving their letters.

While patients receive copies of discharge letters inconsistently,^{16 17} the reasons for this and the subsequent consequences remain unclear.

Hence, the objectives of the current study were to conduct a realist review of patients receiving discharge communication (the intervention); to develop a programme theory (PT); and to make best practice recommendations. The research questions (RQs) were as follows:

RQ1: What positive and negative outcomes have been reported on patients receiving written discharge communication?

RQ2: What are the important contexts which are associated with whether the mechanisms produce the different outcomes, and why?

METHODS

A realist review is a, 'theory-driven, interpretative approach to the synthesis of evidence'.¹⁸ Synthesising evidence involves interrogating data sources to develop, refine and test *context*, *mechanism* and *outcome* configurations (CMOCs). 'Context' may be conceptualised as external factors that influence mechanisms.¹⁹ 'Mechanisms' are hidden, context-sensitive causal forces that produce 'outcomes'.¹⁹ Following Pawson *et al.*,¹⁹⁻²² CMOCs should be configured and consolidated to build and develop a realist *PT* or theorised explanation of how an intervention *works* or not. The intervention under scrutiny 'patients receiving discharge letters' was defined by the review team as 'the patient being given or sent any form of written (paper or digital) hospital discharge communication; this could be a direct copy, patient-directed letter, or a combination.' The aim of the review is to understand and explain how the different outcomes are produced for adult patients receiving written discharge letters. Outcomes may be simplified into desired/beneficial or 'positive' (eg, increased satisfaction) and undesired/detrimental or 'negative' (eg, increased anxiety).

We have previously published the full protocol for this review²³ which justifies the rationale for a realist approach and considers each of the methodological steps in detail. The overall review design was informed by previous

literature, driven by the RQs, consists of six steps^{19 24 25} and is further described in the protocol paper.²³ This design is summarised in figure 1.

PT development (step 1)

The task of locating existing theories to develop an initial rough PT was achieved through a scoping search. Theories and evidence were sought which aided explanation of how and why patients receiving discharge communication results in different positive effects (eg, drug adherence) and negative effects (eg, preventable hospital readmissions). Sources were selected based on their 'relevance'¹⁹⁻²¹ to the PT; where *relevance* concerns 'does the [source] address the theory under test?'.²⁰ Crucially, the whole source did not need to inform the PT but we considered the relevance and contribution of sections of the document.²⁰

Search terms were based on the intervention (eg, patient cop(y)ies). Published resources and healthcare websites were searched to ascertain a range of evidence (see online supplementary file 1). During this phase, research team judgement was needed to decide the stopping point for PT development as was the need to balance the degree of comprehensiveness and practicalities.²³ As the purpose was to locate existing theories and initial concepts, the search was not intended to be comprehensive and the decision was made to screen no more than 30 documents. During the scoping search, search strategies within articles and article indexing were noted in order to inform a more thorough subsequent search in step 2.

Twenty-seven documents were selected from the scoping search (see online supplementary file 2). All documents were then interrogated and coded for any CMOCs, concepts or theories which could inform development of a PT. These were consolidated to form figure 2, the initial PT.

The initial PT shows two main channels for discharge communication; patient copied into (or not) the hospital to GP letter and patient received a personalised letter. Limited evidence was available for the option of 'patient does not receive copy' as evident in figure 2. Patients being copied into discharge letters, whether by choice or otherwise, are associated with a large range of mechanisms and

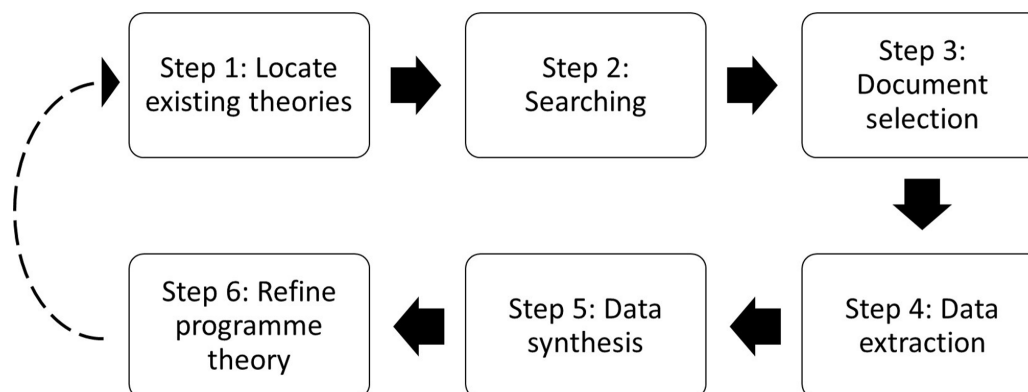


Figure 1 Review design.

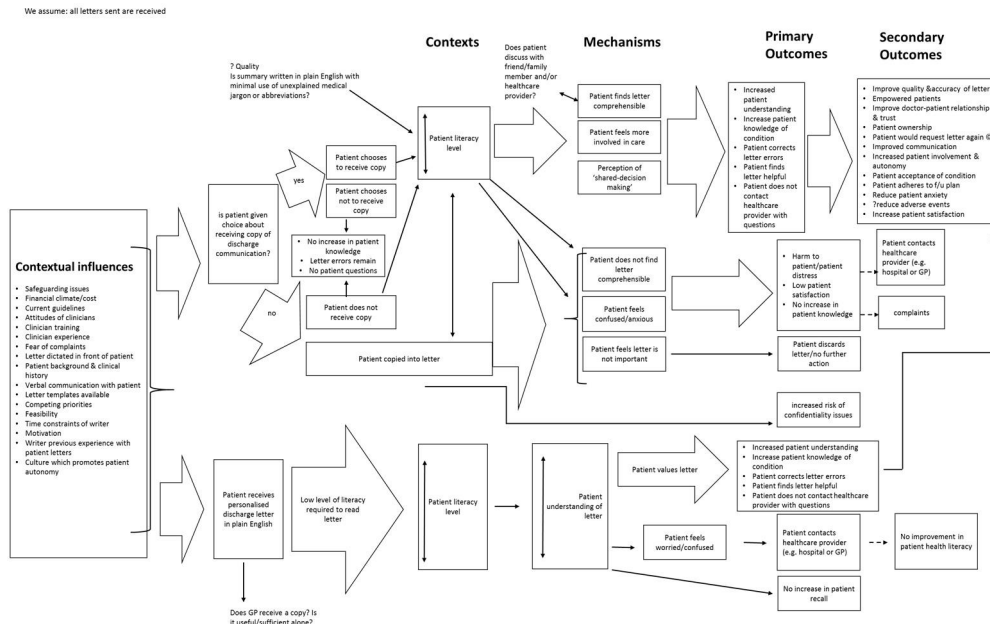


Figure 2 Initial programme theory. GP, general practitioner.

outcomes. Contexts such as ‘patient literacy level’ are likely to influence generation of mechanisms (patient does/does not find letter comprehensible) and outcomes (increase/no increase in patient knowledge), but this was unclear from the evidence reviewed in the scoping search. The scoping search revealed a range of ‘contextual influences’ (eg, ‘time constraints of writer’ may affect whether a patient is given a choice about receiving a letter and also the overall letter quality). It was unclear where some CMOCs began and ended (eg, ‘is patient given choice about receiving copy of discharge communication’ falls between contextual influences and context labels). In figure 2, f/u stands for ‘follow-up’ and the small circled ‘c’ icon refers to an outcome which could also thereafter take the form of a context. In summary, there were clear ‘gaps’ and information missing from the initial PT, confirming that the scoping search in isolation was insufficient for realist theory generation; further evidence and searching was needed to clarify details and simplify CMOCs (steps 2–6).

Search strategy (step 2)

The electronic searching was purposive and guided by the initial PT, results and indexing from step 1. A search strategy was developed which was piloted and adapted for MEDLINE until a diverse and relevant range of search results were yielded (target 500–3000). In line with a realist approach, searching was iterative, and the strategy was refined for each database (see online supplementary file 3). Sources included electronic databases, healthcare sites and grey literature.

The search strategy was not intended to be exhaustive, but provided a large enough overview to be meaningful for PT development.²⁰ Evidence was searched up until September 2017; publications were monitored thereafter

but no new evidence affected the PT. In total, 3113 documents were selected for screening.

Selection and appraisal of documents (step 3)

Inclusion or exclusion of source evidence for the review was according to the following criteria:

Inclusion criteria

- ▶ Full text or section of source had *relevance*^{19 20} to informing the PT.
- ▶ Relate to inpatients/outpatients discharged from general hospital setting to GP (or equivalent).
- ▶ Relate to discharge where ‘written discharge communication’ is sent to GP or referring physician (may also be copied to patient).
- ▶ Source written or published in English.

Exclusion criteria

- ▶ Specific to discharge to units/physicians other than GPs (or equivalent), for example, another hospital.
- ▶ Specific to discharge of patients who lack cognitive capacity, for example, dementia, or where there may be higher risk of harm, for example, mental health discharge.
- ▶ Lack of written communication having taken place, for example, telephone only.
- ▶ Specifically relate to patients <18 years.
- ▶ Source not written or published in English.

The exclusion criteria posed limitations on the review; children under 18 (where the parent would often be the letter recipient), patients with particularly specialised communicative needs (eg, patients without capacity) or where the intervention may have a higher potential risk of causing harm (eg, psychiatric discharge documents) were excluded. The communication needs of

some of these patients may be more complex and variable within and between groups and therefore was not possible within review scope. The first exclusion criterion states patient discharge communication to those other than GPs or equivalent (eg, family or community physicians) was excluded. This is because the review specifically focussed on discharge communication to GPs and patients rather than referrals or care-handovers. Furthermore, the review aimed to develop a theory for patients receiving discharge communication and inclusion of hospital–hospital discharge may have reduced clarity and produced a less focussed theory.

Once KW had screened the documents by title and abstract, second reviewer EM screened a random 10% test selection; this proportion was selected following Wong *et al.*²⁴ Inter-reviewer agreement was set at kappa measure $\kappa \geq 0.8$.²⁶ A result $\kappa < 0.8$ would require all documents to be second screened. Inter-reviewer agreement was calculated as sufficient ($\kappa = 0.82$). In the first screening phase, 611 duplicates were removed and 2341 documents excluded; this left 161 documents.

The full texts of these 161 documents were then screened, primarily for relevance^{19 20} by KW, with EM screening a random 10% sample. Inter-reviewer agreement was again sufficient ($\kappa = 0.92$). Eighty-eight documents were excluded at this stage leaving 73 for inclusion.

In addition, hand-searching of bibliographies, ‘cited by’ searching, and contacting experts was undertaken. This identified a further 30 relevant documents, creating a total of 103 documents. Online supplementary file 4 provides the final document list. The selection process is summarised in figure 3.

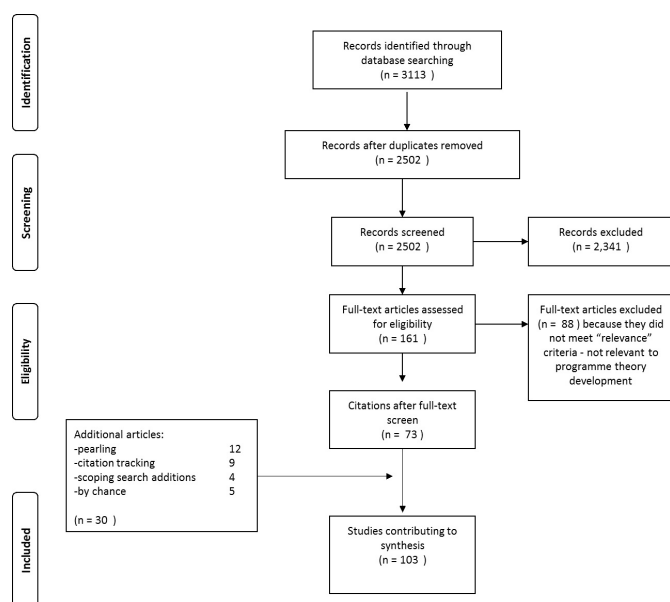


Figure 3 PRISMA¹¹¹ diagram (document selection process). PRISMA, preferred reporting items for systematic reviews and meta-analyses.

Data extraction and analysis (step 4)

A hybrid approach to data extraction was undertaken.^{24 27 28} This allowed extraction of both descriptive document characteristics and annotation of CMOC ideas for synthesis and integration into the PT.^{19 20} A data extraction form was designed iteratively to record pertinent document details. Final columns included: author(s), year, geographical information, healthcare system, design aim, number of participants, intervention, clinical specialty, inclusion and exclusion criteria, findings/conclusions, rigour/quality assessment,^{19 20} topic focus, form of discharge communication, for example, discharge summary, participant mix, staff mix and relevance score.^{19–21}

Documents were also annotated in NVivo for CMOCs and PT ideas. Annotations were guided by the initial PT devised in step 1.

Data synthesis (step 5)

During step 5, data and annotations of PT ideas and CMOCs were consolidated. A realist analytic approach, following the work of Pawson *et al.*,^{19–21 29} was used to interrogate the theory during data synthesis. Pawson *et al.*^{19–21 29} present several different frameworks for synthesising data evidence. We selected the framework²⁰ entitled ‘synthesis to consider the same theory in comparative settings’, which involves five analytical strategy steps. This framework was chosen as it assumes theories sometimes ‘work’ and ‘do not work’ according to the particular setting; Pawson *et al.*²⁰ describe this as ‘aim[ing] to make sense of the patterns of winners and losers’. Hence, this framework is suitable for the RQs which focus on cause and context of positive outcomes ‘winners’ and negative outcomes ‘losers’. Thus, data synthesis was grounded on the assumption that the *outcomes* of the intervention may differ according to *context*.

The following realist analytical strategy steps^{20 27 30} were undertaken simultaneously:

1. Juxtaposition of data sources—align sources to build on/clarify each other.
2. Reconciliation of data discrepancies—explore reasons for data disparities.
3. Adjudication of data—data quality consideration of trustworthiness/relevance.
4. Consolidation of data—inference of mechanisms for outcomes.
5. Situation of evidence—consideration of intervention settings.

Data synthesis using the analytic strategy ‘juxtaposition of data sources’ was achieved through utilisation of NVivo ‘nodes’. Sections of text were annotated, and coded as nodes. The nodes were named according to ideas or concepts around the PT and contained sections of text that were used to build CMOCs. NVivo node coding resulted in 19 nodes as seen in table 1.

During, ‘reconciliation of data discrepancies’,^{19 20 24} and ‘adjudication of data’,^{19 20 24} the data coded within NVivo was used for scanning and comparing data to

Table 1 Coding nodes

Node name	No of different sources coded	Total no of sections of text coded
Autonomy	5	5
Clinician context (views)	23	57
Confidentiality	12	15
Context (when it does not work)	29	46
Context (when it does work)	54	107
Cost/resources	20	33
Dictate in front of patient	3	5
Doctor–patient relationship	5	7
GP preference	4	8
NHS policy or contextual standards (international)	30	51
Outcomes (positive)	58	128
Outcomes (negative)	22	28
Patient as delivery method	2	2
Patient harm	24	33
Patient letters	18	34
Patient preference	37	94
Patient recall	11	12
Queries and contact	10	12
Understanding	46	88

GP, general practitioner; NHS, National Health Service.

identify disparities. Adjudicating and situating evidence was important to reconcile discrepancies.^{19 20 24} We interpreted the data coded within each node and judgements were formed as to which sections of text might be functioning as contexts, mechanisms or outcomes. We then made assessments about what the CMO might plausibly be for each CMO based on the data within each node. Where relevant, we also drew on data contained within other nodes to build CMOs. Following this process, a CMO table was constructed (see online supplementary file 5) for consolidation of data.

After table completion, following Pawson *et al's* framework,²⁰ it was important to make sense of the ‘winners’ and ‘losers’. CMOs were primarily labelled according to how evidence was reported in the included documents, such as whether the outcomes were described as desirable or beneficial. Where evidence was limited or outcomes were not clearly described or evaluated, the research team interpreted what data were available and formed judgements about these CMOs based on content expertise in order to generate ‘positive’ and ‘negative’ labels. CMOs were not limited to one per document or one per patient experience. Thus, multiple outcomes and CMOs could be annotated for a single experience; this exemplifies the complexity of the intervention under scrutiny.

Notably, there were a greater number of CMOs relating to positive outcomes than when the intervention does not work.

PT refinement (step 6): patient and public involvement

Review step 6 was to consider stakeholder perspectives to test and refine the PT in light of the synthesised data²⁰ and to assess whether the PT aligns with real-life experiences.¹⁸ We invited comment from local policy makers and health service commissioners, GPs and a patient and public participation group. Groups were selected according to convenience and accessibility through University links. They were invited to suggest refinements to the PT in an entirely voluntary format, and all comments were anonymised. Formal ethical approval was not required²³ but informed involvement was sought.

RESULTS

Document characteristics

The 103 evidence sources were from 16 countries across various continents with most emanating from England (54%), the USA (17%) and Australia (7%). Healthcare settings were split between insurance style systems (23%) and publically funded systems (77%), such as the National Health Service (NHS). The date range of the sources was from 1979 to 2017 and the total number of participants detailed across the research studies was 16 383; this included staff and patient participants but there was not enough detail across all of the studies to quantify the participant type proportions. Most had been published in the 10 years prior to the search: 1970–1979 (1%), 1980–1989 (2%), 1990–1999 (7%), 2000–2009 (40%) and 2010–2017 (50%). The source type was mixed: discussion and opinion pieces (20%), survey-based study (19%), guideline documents (12%), abstracts (7%), review (5%), interview-based study (5%), experimental study (5%), pilot study (5%), randomised controlled trial or randomised intervention study (5%), non-randomised intervention study (3%), report document (3%), cohort study (2%), mixed methods (not covered above) (1%) and other, for example, PhD thesis (8%).

The evidence covered a wide range of specialties. Most specified inclusion of adult patients only (over 18 years) but often did not detail the exact patient ages in the write up; a few studies focussed on elderly patients. Information relating to patient demographics, for example, gender, was often not found in the sources and hence these were not summarised. Many sources instead focussed on the speciality under consideration in the document and clinical presentations of interest to that speciality for example, ECGs.³¹ Participants who were staff included medical students, hospital doctors of all training grades, nurses, GPs, non-specified hospital staff and non-clinical staff. However, the majority of documents (66%) either did not provide staff participant details or they were irrelevant, for example, guideline document, no participants. The type of discharge communication varied: direct copies

(47%), discharge instructions (12%), pictures (1%), personal discharge packs (1%), personalised letters (12%), information booklets (9%), multiple types of discharge communication (7%) and other (11%). Where the sources came from showed some variation such as Department of Health archive (3%) and conference listing (5%) but the greatest number of sources were from journals (68%).

Quality and document rigour

The findings were considered in light of the quality of included documents. During data extraction, documents were quality appraised for *rigour* and evaluated for *relevance*.^{19 20} The concept of *rigour* is defined as ‘whether the methods used to generate the relevant data are credible and trustworthy’.¹⁸ *Relevance* and *rigour* were scored on a scale from very low to very high and factors such as document type (eg, opinion piece or scientific trial paper) were considered. Documents were not excluded solely based on rigour as extracts of documents with a lower quality score may still have valid contributions.²⁰ The quality of evidence varied, with 53% of sources graded as medium or above for relevance and 80% for rigour. Information relating to setting and context was often limited.

Context–mechanism–outcome configurations

The following section provides an overview of theories in the form of a narrative of how patients receiving discharge letters does or does not work, as informed by the evidence reviewed. The subheaded themes emerged during data interrogation and consolidation although many acted as ‘nodes’ in earlier annotation and coding (see table 1). Sections contain references to CMOCs, quotations from data texts and references. Quotations have been chosen which illustrate the described theories and highlight key elements of CMOCs. The full table of 48 CMOCs is found in online supplementary file 5.

Evidence relating to some aspects of the PT was limited, particularly in relation to negative outcomes, intervention costs, current clinician views, impact on doctor–patient relationships, personalised patient letters and patients not receiving any intervention. Evidence was also thin in relation to data disparities. Although context and outcome information was generally well supported, mechanisms were frequently omitted. Where possible, based on the evidence and research team expertise, we inferred reasons for disparities and what the likely mechanism(s) were within any CMOC.

Patient preference/choice

Allowing patients to make their own choice for receiving letters may reduce unnecessary resource strain³²[CMOC14], only take minimal time,⁹ make patients feel more involved in their care^{2 9 33–37} [CMOC2], increase satisfaction^{10 16 34 38–42} [CMOC14, CMOC41, CMOC47] and aid information acceptance¹⁴:

I wanted to know as much as possible about what was going on with my body.¹⁴ (p.73)

Sometimes for whatever reason you don't fully take on board what the doctor has told you. I found the letter useful to read over and digest properly what was written.² (p.3)

Many patients report that receiving letters is useful.^{2 7 16 32 36 37 39 43 44} Patients may show friends/family to help them better understand their condition/treatment.^{14 16 34 36 42 45–47} Patients may use letters as a reference/reminder for the consultation^{14 16 34 36 39 40} [CMOC45]:

My mind went blank after seeing the doctor and the letter reminded me of what had been said.³⁶ (p.83)

Across a range of specialties and settings, the reported patient preference for receiving copies of their discharge letter is generally high (79%–97%).^{7 8 14 34 35 40 43 44 48–51} However, not all patients may find letters helpful^{32 42} or necessary,^{7 32–34 39 42 52} and some may not want to be reminded of their diagnosis,³⁴ which could decrease satisfaction, and generate queries if these patients were sent letters without a choice [CMOC40]. Hence, several studies argue in favour of respecting patient choice and suggest that the patient's right to ‘opt out’ needs to be addressed^{7 14 16 39 49 52–54} [CMOC41]. In situations where the patient is not offered a choice, such as third-party information or risk of harm,² the clinician should be able to justify this decision.⁵⁵ In relation to sensitive information or social diseases, patients generally do not object to this being included in the letter as long as it has ‘some relevance’.⁵⁵

Comprehension, queries and recall

There was considerable evidence, particularly from patient viewpoints, to support the view that the majority of patients may understand their letters^{7 8 14 15 32–36 43–45 55 56} and hence find the letter beneficial and helpful^{32 43 57} [CMOC7, CMOC39, CMOC44]. Moreover, a letter copy which is understood can reassure patients that they are being listened to^{42 43 58} [CMOC34, CMOC48]. Patient understanding of discharge instructions may increase their knowledge⁴² and this might reduce unnecessary or avoidable hospital readmissions^{59–63} and reduce patient anxiety⁶⁴ thereby supporting patient well-being^{16 50 55} [CMOC39]:

I found the letter very comforting and reassuring.⁶⁵ (p.58)

Although there may be a risk that patients receiving letters is associated with an increase in queries to seek clarification about what has been communicated,⁵⁴ several sources indicated that this occurs to a minimal extent^{8 33 43 51 55} [CMOC29]. Examples of patients not understanding letters were sometimes described as a ‘small proportion’³² or low percentage ‘7%’.³⁴

If patients are provided verbal information only, they may fail to retain the information^{36 40} [CMOC18] which can decrease recall and adherence [CMOC21]:

By the time I have got home, I have forgotten half of what was said in clinic.⁴³ (p.255)

Due to this, combining written and verbal information⁶⁶ may improve patient understanding^{36 67–70} [CMOC15, CMOC18], increase patient's involvement in their care^{16 36} and compliance^{2 17 44 58 71 72} [CMOC11, CMOC43] and improve recall^{10 14 15 33 40 44 68 73 74} [CMOC5, CMOC15].

Contexts which may increase likelihood of triggering patient understanding include letter language translation,^{38 75 76} writing the letter at a fifth-grade or sixth-grade reading age level^{38 68 77 78} [CMOC12], use of glossary,^{16 79} pictures, pictographs or equivalent^{68 79–81} (particularly for low literacy or illiterate patients) [CMOC17], lay explanations for 'technical terms',^{16 55} and writing in plain English with minimal jargon/abbreviations^{2 35 39 55 68 78 82–84} [CMOC12].

Two sources with the same lead author suggested training medical students on writing patient letters can help produce letters that are more meaningful to patients^{65 85} [CMOC13]. However, the evidence around training in relation to the intervention was limited and needs further research.

Personalised or patient-directed discharge letters

Producing a letter which is comprehensible and useful to both GPs and patients has been recognised to be an issue.^{17 47 77 86} Patient-directed or personalised patient letters have been proposed [CMOC24, CMOC36]. Patients often rate these letters positively^{6 42 87} and this may heighten satisfaction,⁴² and improve understanding^{6 88}:

Simplifying written communication has also been shown to improve patient comprehension.⁶ (p.855)

However, personalised letters have the potential to lead to resource consumption⁴⁴ [CMOC25], staff time depletion^{32 44 88} and patient anxiety that they have been given different information to their GP⁸⁸ [CMOC26]. For these reasons, further research which weighs the benefits of personalised patient letters against the drawbacks and costs is needed.

Patient to deliver letter

The context of patients delivering letters seems to have few reported positive outcomes. Posting and electronic transferral of letters may be preferable as:

It is not considered good practice to send the discharge summary home with the patient as there is no guarantee that the information will be passed on to the general practitioner.⁸⁹ (p.7) [CMOC31]

Dictating letters in front of patients

Evidence for this concept was somewhat thin. One study suggested that dictating letters in front of patients can make patients feel less in need of a copy of the letter.⁸ Another paper suggested this practice may also provide

a context that triggers patients to challenge inaccuracies, improving letter quality⁹⁰ [CMOC22, CMOC30]:

The content of letters to GPs is sometimes incorrect and this may be remedied by dictating the letter in front of the patient.⁹⁰

Confidentiality

There are concerns and legal implications surrounding potential confidentiality breaches associated with patients receiving letters, particularly when they are sent out in the post.^{35 40 48 50 53 86 91} One recent paper⁴⁸, which looked at confidentiality, continued to stress risks around postal communication and the importance of secure information transfer:

There is a substantial risk of breaching patient confidentiality when distributing correspondence by post. A well-designed security arrangement is therefore required to ensure the safety of confidential information.⁴⁸ (p.35)

Some documents^{2 35 48 53 55} suggested ways to reduce potential risk of confidentiality breach through communication platforms and the processes involved in sending letters, for example, verifying patient contact details before sending letter^{35 58} [CMOC3, CMOC27, CMOC28].

Patient harm

Patient anxiety or 'harm' in general are often cited as reasons for clinicians not wanting to copy letters, particularly in 'bad news' settings^{14–17 36 44 47 56 92} [CMOC6]. Letter inaccuracies can cause concern leaving patients feeling confused or anxious³² [CMOC19]. Nevertheless, the letter can reassure the patients their problems are being handled⁵⁰ [CMOC46] and initial anxiety can settle or be nullified by the usefulness of the letter^{7 41–44 55 85 91} [CMOC37]. Moreover, one study³⁹ published in the *Lancet* suggested that patient letters in 'bad news' settings may be more useful than 'good news':

Patients who had received bad news found the letter significantly more useful in helping them to understand and remember what they had been told during the consultation than did patients receiving good news... almost half the patients receiving bad news found their letter distressing to some extent; however, with 1 exception, all patients were pleased to have received it.³⁹ (p.924–925)

Although the above paper was published in 1991, we found no recent evidence or system changes to dispute the notion that 'bad news' letters may be of particular use to the patient. Hence, despite risk of initial 'harm', 'bad news' letters should perhaps not be avoided.

Practical and feasible suggestions were found in some documents for minimising harm or anxiety: not copying letters with information not previously disclosed to the patient^{2 3 14 55} [CMOC38], abstain from use of value judgements, for example, pleasant female³⁶ [CMOC12],

potentially avoid or carefully consider copying letters where there are ‘problems of privacy at home’ and/or where the patient lacks capacity² [CMOC20], and checking the patient consents to a letter⁵⁵ [CMOC41].

Clinician views

GP and hospital clinician views were described both as broadly in favour⁹³³⁴⁷⁵⁸⁸⁸⁹³⁹⁴ [CMOC5, CMOC16] and not in favour of patients receiving written discharge communication across a range of specialities¹⁰¹¹¹⁶³³³⁵³⁶⁴⁵⁴⁷⁵⁰⁸⁸⁹⁴⁹⁵ [CMOC6, CMOC35]. The response section⁹¹¹⁸⁶ to a *BMJ* article⁹⁶ on patient letters demonstrates the clinician view dichotomy as practitioners argue for and against patients receiving letters:

My colleagues and I have had to explain to alarmed and bewildered patients who have received copies of their correspondence the meaning of phrases...⁸⁶ (p.1369)

The purposes of clinic letters are to communicate with general practitioners and keep a legible record in the notes of what is happening and what might happen. It is written in medical speak, and it is fantasy to suggest that letters written like that will ever be meaningful, without further explanation, to most patients.¹¹ (p.1369)

Generally, doctors who are sceptical about copying letters to patients seem not to have tried it, whereas those who send copies routinely are enthusiastic.⁹ (p.1370)

Practitioner perceived benefits found in the sources [CMOC5] included improved patient understanding,⁴⁷⁸⁸ increased transparency⁴⁵ [CMOC33], improved trust/doctor–patient relationship,⁹⁴⁷⁸⁸ dispelling fears of ‘secretive relationships’ between clinicians⁴⁷ and heightened sense of patient importance.⁴⁷ In addition, the patients’ right to view the information was noted⁸⁸ [CMOC7, CMOC16]. A common practitioner concern of the intervention across specialties was letter comprehensibility and patient understanding¹¹¹⁶³³³⁵³⁶⁴⁵⁴⁷⁵⁰⁸⁶⁸⁸⁹⁷⁹⁸ [CMOC6]. Other concerns included cost of additional materials/staff time¹⁷³²³³⁴⁸⁵⁰⁸⁶⁸⁸ [CMOC23, CMOC32], patient anxiety¹⁶¹⁷³⁵³⁶⁴⁷⁵⁰⁸⁸⁹⁵ [CMOC6, CMOC19], increased patient queries¹⁷³³ [CMOC29], potential confidentiality breaches⁴⁷ [CMOC6, CMOC27] and that letters would need to be oversimplified.¹⁶¹⁷⁴⁷⁸⁸⁹⁸⁹⁹ An attitudinal issue found in two oncology documents⁴⁵⁸⁸ published 17 years’ apart was the view that letters are tools to be used between doctors only [CMOC6]. Additionally, juniors can learn from and mimic superiors and also not send letters to patients.⁹⁵

Confusion around ‘letter comprehensibility’ and lack of ‘patient understanding’ were the the most common clinician reservations relating to the intervention.¹¹¹⁶³³³⁵³⁶⁴⁵⁴⁷⁵⁰⁸⁶⁸⁸⁹⁷⁹⁸ However, as covered in the *comprehension* section, patients are often reported as *understanding* their letters^{78141532–3643–455556} and furthermore they tend to express strong preference for receiving such

letters.^{7814343540434448–51} Thus, it may be inferred from the evidence that patient understanding of letters is possibly higher than clinicians’ perceive.³³⁴⁴⁵⁶ The following from a recent abstract⁴⁵ concisely summarises an example of patient and clinician view disparity:

While some oncologists assess the copy letters as inappropriate for supplemental patient-oncologist-communication, breast cancer patients regard this tool as predominantly gainful. Oncologists appear to stick to their traditional perspective which perceives the copy letter mainly as a communication tool from doctor to doctor.⁴⁵ (p.185)

Notably, much of the evidence reporting clinician views was published from 2002 to 2008 and current evidence on clinician perspectives remains limited. Moreover, although sources occasionally referred to conflicting clinician views, information on why attitudes differ was thin. Overall, better understanding of current clinician views on copying discharge letters to patients is required. Further research should address reasons behind different viewpoints to include patients and practitioners.

Cost and resources

The estimated costs associated with the intervention varied¹⁶ but this must be considered in the context that included documents spanned a wide time range and thus factors such as inflation need to be considered. In addition, robust health economic analyses were not found in the included sources. Documents^{161732–3436404349–5153–558690100} referred to ‘cost’ or financial implications [CMOC25] of sending letters in different ways such as use of consumables^{17323349–5154100} [CMOC10], and secretarial¹⁶¹⁷³²³³³⁶⁴³⁵⁰⁵⁴⁵⁵¹⁰⁰ [CMOC10] and clinician time required.¹⁷³² A few sources,²¹⁷³⁴³⁶⁴⁴⁵⁵¹⁰¹ including guideline documents and research papers, suggested that benefits were such that associated costs were minimal, or even reduced by patients being more informed from receiving discharging communication [CMOC7, CMOC25, CMOC42]. However, as many of these views were based on personal comment or studies with weak methodologies, the true cost consequences remain unknown.

Autonomy

One source suggested that when patients are not given letters, they may feel less involved in their care, resulting in reduced patient autonomy⁴¹ [CMOC1, CMOC6]:

...to refuse to provide such information if this is the patient's wish is to deny their autonomy.⁴¹ (p.388)

Conversely, some evidence¹⁶⁴¹¹⁰² was found that providing patients with written discharge letters is their ‘right’,³⁵³ may create a sense of involvement, and increase patient autonomy and satisfaction [CMOC2, CMOC4, CMOC5, CMOC8, CMOC14].

Doctor–patient relationships

Few documents^{2 9 14 16 47 72 88} were found which considered the intervention in terms of the doctor–patient relationship. However, much of the limited evidence that was found indicated that patients receiving letters has the potential to improve communication, trust and the doctor–patient relationship [CMOC9].^{2 14 16 47 72}

Stakeholder perspectives

As detailed in step 6, the final review step was to refine the PT through stakeholder perspectives. Three groups were consulted: local commissioners, GPs and service-users/patients. Stakeholder involvement took the form of group discussions and email correspondence. As the PT was continually being developed throughout the review process, stakeholders commented on the most recently developed PT at the time of their involvement. Groups were relatively small; due to feasibility, it was not possible to achieve diverse and representative group samples.

Group discussions were centred on the PT; members were encouraged to critique and feedback on the PT diagram. This included concepts not covered or explored in detail in the PT diagram such as the importance of comprehensible language and terminology, difficulty and problems retaining verbal information only for example, following use of anaesthesia, patient choice of receiving letters, illegibility of handwritten discharge communication, critical context of prior patient communication of a high quality to increase likelihood of understanding discharge letters, issues around personalised patient letters considering NHS resource availability, and concerns around writing a letter which meets the needs of both GP and patient. The commissioner and GP representatives emphasised the importance of patient safety and that this should be central to best practice recommendations. In addition, the patient group reported reading a letter about themselves written in third person was peculiar. The patient group felt patient letters were very important for patients taking responsibility for their

health in line with the NHS promotion of patient-centred and patient-led care.

Several different members across the various groups commented that in practice, patients do not always receive their letters, despite this process being recognised as best practice. Recommendations were suggested to rectify this by the commissioner members to include the following: clinicians should assume when writing letters that they could be made available to the patient, early clinician and student training in good letter writing and record keeping and that hospitals should support the initiative for example, quality improvement activities and audits.

Cycling of review steps

As a realist review is an iterative process, steps may be repeated. As described in step 2, new publications were followed and consulted for evidence but provided no new or conflicting PT knowledge. Thus, it was deemed that ‘theoretical saturation’^{19 21} in accordance with Pawson’s realist review methodology^{19–22} was attained and no further searching or step cycling was required.

Resultant PT

The PT was systematically updated to produce a resultant PT following review steps 1–6 (figure 4). This still shows two main channels for CMOCs: patient copies of letters and patient personalised letters. There remained limited CMOCs for where patients do not receive letters, due to the paucity of evidence available. Contexts for when the patient does receive their letter(s) were condensed into an aligned grouping of five key contexts for when the intervention may be theorised to work and four key contexts for when the intervention may be theorised not to work. The feasibility of providing a personal patient letter was updated on the PT; findings from both stakeholder feedback and data synthesis suggested personalised letters may currently be more feasible in private or insurance-based healthcare settings than in the NHS. In addition, the box of contextual influences was deleted,

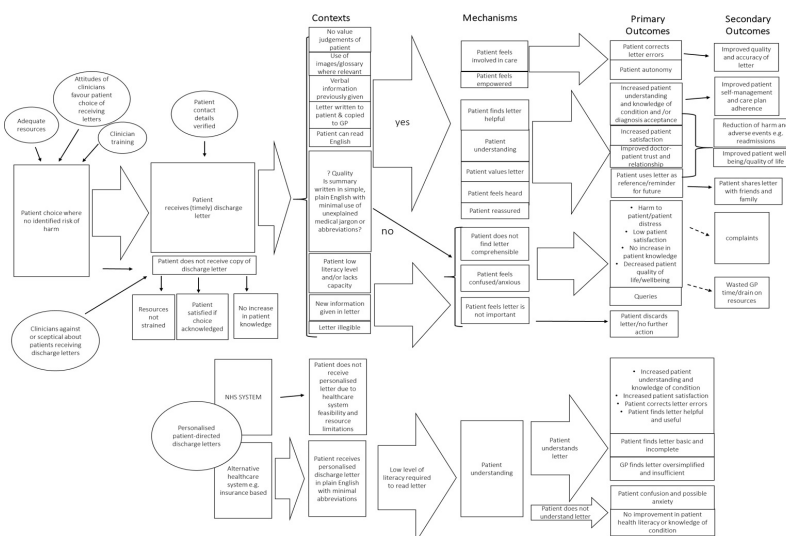


Figure 4 Resultant programme theory. GP, general practitioner; NHS, National Health Service.

and the points integrated into the overall diagram. Patient outcomes throughout the PT were simplified and clarified (eg, the outcomes such as ‘empowered patients’ and ‘reduce patient anxiety’ were simplified to the outcome ‘improved patient well-being’).

In addition, CMOCs have been ‘grouped’ where overlap was apparent, for example, all resources are labelled simply as ‘resources’ as data often concurrently referred to financial, administrative and clinician time resources. ‘Patient choice’ emerges as a key influencer to the success (or not) of the intervention. Notably, there are a range of contexts, mechanisms and outcomes for when the intervention is theorised to ‘work’ (eg, positive outcome=improve doctor–patient relationship), and when it does ‘not work’ (eg, negative outcome=harm to patient). It is also evident that contexts can be used in combination to increase the likelihood of beneficial outcomes; this is indicated through wide arrows to show multiple linkages and amalgamations (eg, a letter could contain no value judgements of patient and be written in simple plain English). Notably, the resultant PT has a higher incidence of CMOCs for when the intervention ‘does work’; this is considered further in the discussion.

DISCUSSION

Statement of principal findings

This review of 103 sources summarises and expands on existing evidence by moving beyond ‘benefits’ and ‘drawbacks’ of patients receiving letters alone, and considering contexts of *when* as well as *how* the intervention works. Although the review focuses on the UK health system, our use of realist review has enabled identification of findings that may be transferable to other healthcare settings.

RQ1 asked about positive and negative outcomes of the intervention. Positive outcomes include increased patient satisfaction,^{10 16 34 38–42} improved doctor–patient relationship and trust,^{14 16} heightened patient knowledge,⁴² improved letter and record quality,^{2 55 90} and reduced anxiety.⁶⁴ Negative outcomes include patient queries,⁵⁴ confusion^{47 50} and anxiety.^{15 42}

RQ2 enquired after the important contexts for triggering these outcomes. Important contexts for positive outcomes include letters written in plain English with minimal abbreviations,⁵⁵ lay explanations or simplified terms in brackets for medical jargon,^{16 55 82} for example, myocardial infarction (heart attack), written information provided alongside verbal explanation,⁶⁶ no new information in letter^{2 14} or value judgements,³⁶ letter translation^{38 75 76} where relevant, training clinicians on letter writing practice,^{2 65 83 85} use of pictures and glossaries where relevant,^{16 68 79–81} letters only given to patients who choose to have them,^{16 32 55} and where there is no identified risk of harm² or confidentiality breach.⁵⁵ Important contexts for negative outcomes include patient choice not acknowledged,⁵⁵ only verbal information provided,⁴³ letter involving terms and a style that is too advanced for

patient to comprehend,⁷⁷ and letter sent without verifying patient contact details.^{35 53 58}

This review has produced two key findings, which are important but not wholly surprising. The first is that the reviewed evidence indicates that patients value their discharge letter and their understanding of them is possibly greater than clinicians perceive.^{33 44 56} However, reasons behind patient and clinician perceived comprehension discrepancies were unclear. It is important to situate the first finding in terms of the study exclusion criteria and participant diversity across the evidence reviewed, for example, it is likely that patients who participate in research on this topic have a greater level of interest and literacy than those who did not participate. One or a number of demographic groups not involved in the studies, either by choice not to participate or by exclusion, may have accounted for a portion of those who clinicians perceive to have low understanding. Thus, evidence for low patient understanding was limited, and this requires further research. The second key finding is that in a number of contexts, patients expressed preference for receiving correspondence.^{7 8 14 34 35 40 43 44 48–51}

Patients can continue to use the letter(s) to refer to beyond discharge,^{16 34 36} as a medication list reminder, and to share with friends/relatives as desired.^{15 34 36 88} Nevertheless, patient *choice* should still be acknowledged as the review did find evidence that not *all* patients want their letters; a practical way of addressing this would be to check with the patient that they want a letter in the first instance.^{7 16 53 55}

Systems for monitoring patient letters (eg, the Newcastle Trust Policy for auditing and sharing letters with patients⁵⁵) seem prudent moving forward. This is of particular relevance in the NHS given that guidelines for copying letters have been widely available since 2003² and yet in practice, many patients do not receive letters.^{16 48} Given the wider context of a drive for patient-led care and patient-centred communication and decision-making,^{17 41 103} this review is timely and relevant. The review findings have the potential to influence policy and improve practice. The results demonstrate how care can be improved through patient choice and good quality letter provision. However, current clinician views^{33 35 36 44 45 56 88} and hierarchical mimicking of practices of seniors⁹⁵ pose a barrier to implementation and need addressing.

Review limitations

For this review, we followed the Realist And MEta-narrative Evidence Syntheses: Evolving Standards (RAMESES) quality and publication standards for realist reviews.^{104 105} Quality assessment and analysis is to a degree dependent on reviewer skills and reflexivity.^{106 107} Furthermore, analysis and inferences were ‘subjective and interpretative’.^{108 109} However, because the steps we have taken for this review are transparent, other review teams can see and make judgements on result plausibility.

Due to lack of time, it was not possible to involve all stakeholder groups who may be connected with discharge

communication. Nonetheless, the review had a specific focus on 'receiving' discharge communication and thus stakeholders were targeted who were closely associated or involved in policy of discharge letter receipt.

The resultant PT is limited by the quality and content of evidence reviewed. Some of the evidence found in sources was markedly thin, particularly in relation to costing information, recent clinician viewpoints, personalised letter copies and influence on the doctor–patient relationship. Furthermore, there were a greater number of CMOCs relating to positive outcomes than negative outcomes, that is, when the intervention *does* work than *does not*. This may be rationalised by publication bias towards positive findings. Additionally, the binary distinctions between positive and negative outcomes, that is, when the intervention does and does not work, may have imposed oversimplified CMOC labels. 'Positive' and 'negative' labels were based on evidence presented in the documents reviewed; at times a degree of subjectivity was involved in this process. Although these binary labels (positive/negative) may have oversimplified some CMOCs, we felt the usefulness of clear distinctions between when the intervention was interpreted to 'work' (and not) outweighed the drawbacks of this method.

CMOCs for patients *not* receiving letters (nil intervention) were thin. Consequently, these evidence limitations constrained the detail available in the resultant PT in these areas. Additionally, not all mechanisms could be inferred from the data resulting in some visible mechanism 'gaps' within the CMOC table (see online supplementary file 5).

The review and PT are not exhaustive but this is not the intention of a realist review.¹¹⁰ Given time and resource constraints, the review was limited to adult patients who had been discharged from general hospital settings, and other patient groups were excluded. Furthermore, the PT is limited by the representativeness and diversity of the patient groups within the sources reviewed. Much of the evidence was drawn from small scale studies conducted in single settings, and even within these there is likely to have been participation bias which will have resulted in the views of ethnic minorities, patients lacking literacy and other marginalised groups being under-represented.

Suggestions for future research

The PT offers a useful starting point for future research and should be useful and practicable for informing policy and guidelines. Further research is needed to explore the relevance of the PT to groups, such as children and adults being discharged from mental health services, who were excluded from this review and to those, such as marginalised groups, who may have been under-represented in the evidence included in the review. There is also a need for research to define the cost benefits of copying patients into discharge letters in order that the importance of this topic and the consequences of poor practice are recognised by policy-makers, managers and professional bodies. Potential barriers such as clinician

views and the current limited available clinician training on letter writing should be addressed; research and evaluation is needed to inform how this can be effectively achieved. Since patient and clinician views were sometimes conflicting, a study which parallels both views alongside the same patient cases to understand reasons for any discrepancies would be useful and may provide valuable insights. This is the topic of a PhD that is currently being undertaken by the lead author, and will be reported in due course.

CONCLUSION

The resultant PT forms a basis for explaining how, when, why and for whom this intervention does and does not work. The resultant PT makes suggestions for how best practice of patients receiving discharge letters may be improved to enhance the provision of patient-centred care. Evidence for some aspects of the PT was rather limited, indicating a need for more research.

The key findings are that the value patients place on discharge letters and their understanding of the letters' content is possibly greater than clinicians' perceive, patient choice is instrumental to increasing the likelihood of desired outcomes and that clinician views may act as a barrier to wider practice implementation. This could be addressed through clinician training and organisational initiatives which guide, mandate and monitor the intervention. Without such organisational support, it is unlikely that current processes will be consistently improved given the barriers identified in the review.

In conclusion, this review describes how the intervention of patients receiving their discharge letters may *work* to increase the likelihood of positive effects and reduce potential negative effects.

Acknowledgements We thank Samantha Johnson, our information specialist, for critically appraising the search strategy. We would also like to thank all stakeholders involved in the review for improving the quality and relevance of the resultant theory.

Contributors KW was the lead reviewer. EM completed the second reviewer tasks. All authors contributed towards the programme theory through discussions. KW is responsible for the design and drafting of the initial manuscript. GW, ES, SS and JD critically reviewed and edited the final manuscript. All authors read and approved the final manuscript.

Funding This work is supported by the Economic and Social Research Council (ESRC) and Clinical Commissioning Groups (CCGs) of Coventry and Rugby and South Warwickshire. Funding for the open access charges for publication of this review was provided by the RCUK fund.

Competing interests None declared.

Patient consent for publication Not required.

Provenance and peer review Not commissioned; externally peer reviewed.

Data sharing statement This review presents previously published and publicly available data. Please refer to the reference list (in article and in supplementary file 4) and their authors for these research data.

Open access This is an open access article distributed in accordance with the Creative Commons Attribution 4.0 Unported (CC BY 4.0) license, which permits others to copy, redistribute, remix, transform and build upon this work for any purpose, provided the original work is properly cited, a link to the licence is given,

and indication of whether changes were made. See: <https://creativecommons.org/licenses/by/4.0/>.

REFERENCES

- NHS England. Standards for the Communication of Patient Diagnostic Test Results on Discharge from Hospital. 2016. <https://improvement.nhs.uk/uploads/documents/discharge-standards-march-16.pdf>
- Department of Health. Copying letters to patients: good practice guidelines. 2003. <http://webarchive.nationalarchives.gov.uk/>
- Department of Health. *The NHS Plan: A Plan for Investment a Plan for Reform*. London: HMSO, 2000. Available: <http://webarchive.nationalarchives.gov.uk>
- Harris E, Rob P, Underwood J, et al. Should patients still be copied into their letters? A rapid review. *Patient Educ Couns* 2018;101:2065–82.
- The Academy of medical Royal Colleges. Please, write to me: Writing outpatient clinic letters to patients. AOMRC 2018. <https://www.aomrc.org.uk/reports-guidance/please-write-to-me-writing-outpatient-clinic-letters-to-patients-guidance/>
- Lin R, Gallagher R, Spinaze M, et al. Effect of a patient-directed discharge letter on patient understanding of their hospitalisation. *Intern Med J* 2014;44:851–7.
- O'Driscoll BR, Koch J, Paschalides C. Copying letters to patients: Most patients want copies of letters from outpatient clinics and find them useful. *BMJ* 2003;327:451.
- Pothier DD, Nakivell P, Hall CE. What do patients think about being copied into their GP letters? *Ann R Coll Surg Engl* 2007;89:718–21.
- Shee CD. Try it and see. *BMJ* 2008;337(dec10 3):a2786.
- Saunders NC, Georgalas C, Blaney SP, et al. Does receiving a copy of correspondence improve patients' satisfaction with their outpatient consultation? *J Laryngol Otol* 2003;117:126–9.
- Main J. Copying in or copying out? *BMJ* 2008;337(dec10 1):a2688.
- Marzanski M, Musunuri P, Coupe T. Copying letters to patients: a study of patients' views. *Psychiatr Bull* 2005;29:56–8.
- Holdsworth T. Letters as a record of clinic appointments or for Communication. *BMJ* 2008;337:a2324.
- Fenton C, Al-Ani A, Trinh A, et al. Impact of providing patients with copies of their medical correspondence: a randomised controlled study. *Intern Med J* 2017;47:68–75.
- Hallowell N. Providing letters to patients. Patients find summary letters useful. *BMJ* 1998;316:1830.
- Baxter S, Farrell K, Brown C, et al. Where have all the copy letters gone? A review of current practice in professional-patient correspondence. *Patient Educ Couns* 2008;71:259–64.
- Boaden R, Harris C. *Copying letters to patients—will it happen?* Oxford University Press, 2005. Available: <https://academic.oup.com/fampra/article/22/2/141/522310>
- Brennan N, Bryce M, Pearson M, et al. Understanding how appraisal of doctors produces its effects: a realist review protocol. *BMJ Open* 2014;4:e005466.
- Pawson R, Greenhalgh T, Harvey G, et al. Realist review - a new method of systematic review designed for complex policy interventions. *J Health Serv Res Policy* 2005;10(Suppl 1):21–34.
- Pawson R, Greenhalgh T, Harvey G, et al. Realist synthesis: an introduction. *ESRC Research Methods Programme* 2004. Available: <https://goo.gl/1Rz2Ry>
- Pawson R. Digging for Nuggets: How 'Bad' Research Can Yield 'Good' Evidence. *Int J Soc Res Methodol* 2006;9:127–42.
- Pawson R. ed. *Middle range theory and program theory evaluation: From provenance to practice*: Transaction Publishers, 2010.
- Weetman K, Wong G, Scott E, et al. Improving best practice for patients receiving hospital discharge letters: a realist review protocol. *BMJ Open* 2017;7:e018353.
- Wong G, Brennan N, Mattick K, et al. Interventions to improve antimicrobial prescribing of doctors in training: the IMPACT (IMProving Antimicrobial presCribing of doctors in Training) realist review: Figure 1. *BMJ Open* 2015;5:e009059.
- Ford JA, Wong G, Jones AP, et al. Access to primary care for socioeconomically disadvantaged older people in rural areas: a realist review. *BMJ Open* 2016;6:e010652.
- Centre for Reviews and Dissemination. Systematic Reviews: CRD's guidance for undertaking reviews in health care. 2008. https://www.york.ac.uk/media/crd/Systematic_Reviews.pdf
- Wiese A, Kilty C, Bergin C, et al. Protocol for a realist review of workplace learning in postgraduate medical education and training. *Syst Rev* 2017;6:10.
- Mills SL, Pumarino J, Clark N, et al. Understanding how self-management interventions work for disadvantaged populations living with chronic conditions: protocol for a realist synthesis. *BMJ Open* 2014;4:e005822.
- Pawson R. Evidence-based policy: a realist perspective. Sage 2006.
- Brennan N, Bryce M, Pearson M, et al. Towards an understanding of how appraisal of doctors produces its effects: a realist review. *Med Educ* 2017;51:1002–13.
- Ackermann S, Heierle A, Bingisser M-B, et al. Discharge Communication in Patients Presenting to the Emergency Department With Chest Pain: Defining the Ideal Content. *Health Commun* 2016;31:557–65.
- Pinder E, Jefferys S, Loeffler M. Patient Satisfaction: Receiving a copy of the GP letter following fracture or elective orthopaedic clinic. *BMJ Qual Improv Rep* 2013;2:u202144.w1085.
- Brockbank K. Copying patient letters – making it work. *Clinical Governance: An International Journal* 2005;10:231–40.
- Krishna Y, Damato BE. Patient attitudes to receiving copies of outpatient clinic letters from the ocular oncologist to the referring ophthalmologist and GP. *Eye* 2005;19:1200–4.
- Treacy K, Elborn JS, Rendall J, et al. Copying letters to patients with cystic fibrosis (CF): Letter content and patient perceptions of benefit. *Journal of Cystic Fibrosis* 2008;7:511–4.
- Tomkins CS, Braid JJ, Williams HC. Do dermatology outpatients value a copy of the letter sent to their general practitioner? In what way and at what cost? *Clin Exp Dermatol* 2004;29:81–6.
- Perkins P, Jordan A, Prentice W, et al. Copying letters to patients: a survey of patients and GPs views. *Palliat Med* 2007;21:355–6.
- Advancing effective communication, cultural competence, and patient- and family-centered care: a roadmap for hospitals. *Joint Commission* 2014. http://www.jointcommission.org/assets/1/6/aroa_dmapforhospitalsfinalversion727.pdf
- Damian D, Tattersall MHN. Letters to patients: improving communication in cancer care. *Lancet* 1991;338:923–5.
- Antoniou A, Saunders MP, Bourner R, et al. Would you like to see yours? *Ann R Coll Surg Engl* 2007;89:62–4.
- Chantler C, Johnson J. Patients should receive copies of letters and summaries. *BMJ* 2002;325:388a–388.
- O'Reilly M, Cahill MR, Perry JJ. Writing to patients: a randomised controlled trial. *Clin Med* 2006;6:178–82.
- Nixon J, Courtney P. Copying clinic letters to patients. *Rheumatology* 2005;44:255–6.
- Brodie T, Lewis DR. A Survey of Patient Views on Receiving Vascular Outpatient Letters. *Eur J Vasc Endovasc Surg* 2010;39:5–10.
- Baumann W, Schussler L, Bertram M, et al. Oncologists' letters for breast cancer patients. *Oncol Res Treat* 2016;39:184–5.
- Sandler DA, Heaton C, Garner ST, et al. Patients' and general practitioners' satisfaction with information given on discharge from hospital: audit of a new information card. *BMJ* 1989;299:1511–3.
- O'Reilly M, Cahill M, Perry JJ. Writing to patients: 'putting the patient in the picture'. *Ir Med J* 2005;98:58–60.
- Somov P, Madden T, Wong K, et al. Security Concerns About Copying Clinical Letters to Patients. *Ann R Coll Surg Engl* 2013;95:33–4.
- Rao M, Fogarty P. What did the doctor say? *J Obstet Gynaecol* 2007;27:479–80.
- Jelley D, van Zwanenberg T, Walker C. Copying letters to patients: Concerns of clinicians and patients need to be addressed first. *BMJ* 2002;325:1359.
- Sharma D, O'Brien S, Hardy K. Copying letters to patients: What patients think - A questionnaire survey. *Clinician in Management* 2007;15:75–8.
- Lepping P, Paravastu SCV, Turner J, et al. Copying GP letters to patients: A comprehensive study across four different departments in a district general hospital. *Health Informatics J* 2010;16:58–62.
- Singh S, Budeda B, Housden P. Do patients want copies of their GP letters? - our experience with 7250 patients. *Int J Clin Pract* 2007;61:1407–9.
- Liapi A, Robb PJ, Akthar A. Copying clinic letters to patients: a survey of patient attitudes. *J Laryngol Otol* 2007;121:588–91.
- The Newcastle upon Tyne Hospitals NHS Foundation Trust. The Newcastle upon Tyne Hospitals NHS Foundation Trust: Sharing Letters with Patients Policy. 2013.
- Doohar P, Syed A, Liu J, et al. 373 Copying Letter to Patients – Distress or Satisfaction? *Eur J Cancer* 2012;48:S151.
- Bench S, Day T, Griffiths P, et al. Effectiveness of Critical Care Discharge Information in Supporting Early Recovery From Critical Illness. *Crit Care Nurse* 2013;33:41–52.
- Smith PEM. Letters to patients: sending the right message. *BMJ* 2002;324:685.

59. Regalbuto R, Maurer MS, Chapel D, *et al.* Joint Commission Requirements for Discharge Instructions in Patients With Heart Failure: Is Understanding Important for Preventing Readmissions? *J Card Fail* 2014;20:641–9.
60. Saidinejad M, Zorc J. Mobile and web-based education: delivering emergency department discharge and aftercare instructions. *Pediatr Emerg Care* 2014;30:211–6.
61. Lorenzati B, Quaranta C, Perotto M, *et al.* Discharge communication is an important underestimated problem in emergency department. *Intern Emerg Med* 2016;11:157–8.
62. HPOE: A Compendium of Implementation Guides. 2011;2011. http://www.hpoe.org/Reports-HPOE/hpoe_compendium_2011.pdf
63. Cannaby A-M. *Improving the process of hospital discharge for medical patients.* University of Leicester (United Kingdom): Ann Arbor, 2003.
64. Ackermann S, Bingisser MB, Heierle A, *et al.* Discharge communication in the emergency department: physicians underestimate the time needed. *Swiss Med Wkly* 2012;142:w13588.
65. Mrduljaš-Đujić N, Pavlicevic I, Marusic A, Marusic M. Students' letters to patients as a part of education in family medicine. *Acta Med Acad* 2012;41:52–8.
66. Generic Standards. 2002. <http://www.healthcareimprovementScotland.org/his/idoc.ashx?docid=ea8d290a-9504-4c21-a889-fc479d530a51&version=-1>
67. Exploring patient participation in reducing health-care-related safety risks. 2013. http://www.euro.who.int/__data/assets/pdf_file/0010/185779/e96814.pdf
68. Taylor DM, Cameron PA. Discharge instructions for emergency department patients: what should we provide? *Emerg Med J* 2000;17:86–90.
69. Carol Lim KK, Chan SK, Chew EL, *et al.* Handoff communication - Let's do it right. *Med J Malaysia* 2010;65:8.
70. Reilly MM. Let's set the record straight: preparing the discharge summary and the patient's instruction sheet. *Nursing* 1979;9:56–61.
71. Davies JM, Batuyong E, Lupichuk SM, *et al.* Cohort study evaluating the impact of a discharge letter (DL) compared with usual care on adherence to surveillance following treatment for stage II/III colorectal cancer (CRC). *J Clin Oncol* 2012;30(4_suppl):620.
72. Making time in general practice: freeing GP capacity by reducing bureaucracy and avoidable consultations, managing the interface with hospitals and exploring new ways of working. *NHS Alliance* 2015. <http://www.nhsalliance.org/wp-content/uploads/2015/10/Making-Time-in-General-Practice-FULL-REPORT-01-10-15.pdf>
73. Hoek AE, De Ridder MAJ, Bayliss A, *et al.* Effective strategy for improving instructions for analgesic use in the emergency department. *Eur J Emerg Med* 2013;20:210–3.
74. Sandler DA, Mitchell JR, Fellows A, *et al.* Is an information booklet for patients leaving hospital helpful and useful? *BMJ* 1989;298:870–4.
75. Perera KYS, Ranasinghe P, Adikari AMMC, *et al.* Medium of Language in Discharge Summaries: Would the Use of Native Language Improve Patients' Knowledge of Their Illness and Medications? *J Health Commun* 2012;17:141–8.
76. Wimsatt J, Harper A, Jones P. Review article: Components of a good quality discharge summary: A systematic review. *Emerg Med Australas* 2014;26:430–8.
77. Choudhry AJ, Baghdadi YMK, Wagie AE, *et al.* Readability of discharge summaries: with what level of information are we dismissing our patients? *Am J Surg* 2016;211:631–6.
78. Reddick B, Holland C. Reinforcing discharge education and planning. *J Nurs Manag* 2015;46:10–14.
79. Brown CE, Roberts NJ, Partridge MR. Does the use of a glossary aid patient understanding of the letters sent to their general practitioner? *Clin Med* 2007;7:457–60.
80. Fayers T, Abdullah W, Walton V, *et al.* Impact of written and photographic instruction sheets on patient behavior after cataract surgery. *J Cataract Refract Surg* 2009;35:1739–43.
81. Zeng-Treitler Q, Kim H, Hunter M. Improving patient comprehension and recall of discharge instructions by supplementing free texts with pictographs. *AMIA Annu Symp Proc* 2008:849–53.
82. Samuels-Kalow M, Rhodes K, Uspal J, *et al.* Unmet Needs at the Time of Emergency Department Discharge. *Academic Emergency Medicine* 2016;23:279–87.
83. Thornber M. A simple and effective communication skill. *Bmj* 2010;337:a2324.
84. Royal College of Physicians. Writing letters to patients – what's the big deal? 2017. <https://www.rcplondon.ac.uk/news/writing-letters-patients-what-s-big-deal>
85. Mrduljaš-Đujić N, Žitnik E, Pavelin L, *et al.* Writing letters to patients as an educational tool for medical students. *BMC Med Educ* 2013;13:114.
86. McKinstry B. Copying patients in is not as simple as it seems. *BMJ* 2008;337(dec10 1):a2687.
87. Lin R, Tofler G, Spinaze M, *et al.* Patient-Directed Discharge Letter (PADDLE)-a simple and brief intervention to improve patient knowledge and understanding at time of hospital discharge. *Heart Lung Circ* 2012;21:S312.
88. McConnell D, Butow PN, Tattersall MHN. Audiotapes and letters to patients: the practice and views of oncologists, surgeons and general practitioners. *Br J Cancer* 1999;79(11-12):1782–8.
89. *Guidelines on regional immediate discharge documentation for patients being discharged from secondary into primary care.* Guidelines and Audit Implementation Network. 2011. <https://www.rqia.org.uk/RQIA/files/73/734a792f-f9d4-47f0-830f-31f9db51c82a.pdf>
90. Roberts NJ, Partridge MR. How useful are post consultation letters to patients? *BMC Med* 2006;4:2.
91. McEniry B, Pillay I. How do patients in a rural setting respond to receiving a copy of their general practitioners letter? *Ir Med J* 2008;101:84–5.
92. Knight AH, Mayon-White V. Writing to Patients-Annual Review Reports. *Diabetic Med* 1991;8:591.
93. Adams DC, Bristol JB, Poskitt KR. Surgical discharge summaries: improving the record. *Ann R Coll Surg Engl* 1993;75:96–9.
94. Bench SD, Heelas K, White C, *et al.* Providing critical care patients with a personalised discharge summary: A questionnaire survey and retrospective analysis exploring feasibility and effectiveness. *Intensive Crit Care Nurs* 2014;4:30:69–76.
95. Paravastu S, Lepping P, Billings PJ. Copying clinic letters to surgical patients. *Ann R Coll Surg Engl* 2007;89:288–90.
96. Richards T. Copy them in. *BMJ* 2008;337:a2324.
97. Buurman BM, Verhaegh KJ, Smeulders M, *et al.* Improving handoff communication from hospital to home: the development, implementation and evaluation of a personalized patient discharge letter. *Int J Qual Health Care* 2016;28:384–90.
98. Todhunter SL, Clamp PJ, Gillett S, *et al.* Readability of out-patient letters copied to patients: can patients understand what is written about them? *J Laryngol Otol* 2010;124:324–7.
99. Partridge MR, Roberts NJ. Writing to patients. *Clin Med* 2006;6:319.
100. Tattersall R. Writing for and to Patients. *Diabetic Med* 1990;7:917–9.
101. Rao P, Andrei A, Fried A, *et al.* Assessing Quality and Efficiency of Discharge Summaries. *Am J Med Qual* 2005;20:337–43.
102. Vaidya G. Copying letters to patients: are we ready yet? *Hosp Med* 2004;65:454–5.
103. Ahmad N, Ellins J, Krelle H, *et al.* *Person-centred care: from ideas to action.* London: The Health Foundation, 2014. Available: <http://www.health.org.uk/sites/default/files/PersonCentredCareFromIdeasToAction.pdf>
104. RAMSES. Ramses Guidelines. 2013. <http://www.ramesesproject.org/>
105. Wong G, Greenhalgh T, Westhorp G, *et al.* RAMESSES publication standards: realist syntheses. *BMC Med* 2013;11:21.
106. Rycroft-Malone J, Burton C, Hall B, *et al.* Improving skills and care standards in the support workforce for older people: a realist review. *BMJ Open* 2014;4:e005356.
107. Rycroft-Malone J, McCormack B, Hutchinson AM, *et al.* Realist synthesis: illustrating the method for implementation research. *Implementation Science* 2012;7:33.
108. Wong G, Greenhalgh T, Pawson R. Internet-based medical education: a realist review of what works, for whom and in what circumstances. *BMC Med Educ* 2010;10:12.
109. McMahon T, Ward PR. HIV among immigrants living in high-income countries: a realist review of evidence to guide targeted approaches to behavioural HIV prevention. *Syst Rev* 2012;1:56.
110. Wong G. The Internet in Medical Education: A Worked Example of a Realist Review. *Synthesizing Qualitative Research* 2011:83–112.
111. Moher D, Liberati A, Tetzlaff J, *et al.* Preferred reporting items for systematic reviews and meta-analyses: the PRISMA statement. *BMJ* 2009;339:b2535.